

The summer fun begins on May 17!



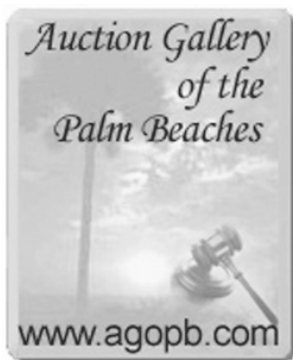
From left: Footed fruit bowl; Seascope, Charles C. Gruppé; Large Fostoria punch bowl and stand with cups, 1920s; *Edge of Marsh*, William McCarthy; Slab turquoise necklace, Barbara Winter Schukoske. All photos by R. Carrier-Brault except *Edge of Marsh*, by R.J. Phil.

FDAC PICNIC AND AUCTION 2008

to benefit the Davison Art Center Collection, Wesleyan University

Saturday, May 17, 2008, 3:30 P.M. at the Davison Art Center, 301 High Street, Middletown, CT
 Picnic by the Fountain ❁ Silent Auction ❁ Raffle ❁ Dessert Buffet ❁ Formal Auction

MANY CHOICE ANTIQUE ITEMS Information: (860) 685-2572 www.wesleyan.edu/dac/auction2008



Monday, May 19 @ 6 pm

Major Fine Art & Antiques Estates Auction

Auction Gallery of the Palm Beaches Inc.

1609 South Dixie Hwy. #5, West Palm Beach, FL 33401

(Located ¼ mile south of Okeechobee on Dixie in the Historic Gatsby's Bldg.)
 561-805-7115 • www.AGOPB.com

Preview: Fri. May 16; Sat. May 17 (10-5); Sun. May 18 (12-5); Mon. May 19 (10 to Auction)



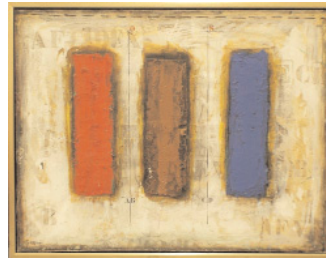
American Early 20th Cent. Amusement/Carnival Mermaid/Merman Aquarium, 75" h. , 76" w. , 53" d.



Fine 38.50 cts. Natural Ceylon Sapphire w/diamonds



Constantine Kluge (1912-2003), "Place de la Madeleine", oil on canvas, signed, 28 3/4" x 36 1/4"



James Coignard (1925-2008), "Composition Trois Verticales", oil on canvas, signed, 45" x 57 1/2"



Edward Dufner (Am. 1872-1957), oil on cardboard, 18" x 11"



Amazing Pair French Majolica Seated Lions, 33" h. , 33 1/4" L.



Jean Dufy (1888-1964), "Paris Promenade", gouache, signed, 18 1/4" x 25 3/4"



140 pcs. Georg Jensen Acorn Sterling Flatware



Set of Six Mahogany Geo. III Chairs



Henry E. Scott (1900-1989), "Crossing the Line", oil on canvas, signed, 40" x 50"



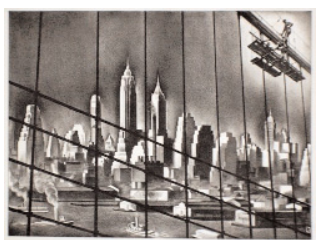
Morris Henry Hobbs (1892-1967), "Piquante", etching, signed, image-7 1/4" x 5"



Chinese Ching, Late 19th Cent. Dragon/Phoenix Vase



Grant Wood (1892-1942), "Wild Flowers", hand colored lithograph, signed, image-9" x 12"



Louis Lozowick (1892-1973), "Through Brooklyn Bridge Cables", lithograph, signed and dated '38, image-9 5/8" x 12 3/4"



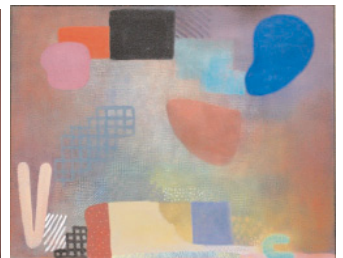
Mane Katz (1894-1962), "Fiddler", gouache on paper, signed "M.K.", 25 3/4" x 19 3/4"



Paul Jenkins (b.1923), "Phenomena Prism Mirror", 1984, acrylic on canvas, signed, 58" x 41"



KPM & German Hand Painted Plaques



Robert Natkin (b.1930), "Hitchcock Series, Anticipation of Night", 1985, acrylic on canvas, signed, 40" x 60"

Andre Lhote (1885-1962), French Landscape, watercolor on paper, signed, 11 1/2" x 12 3/4"



Fabulous Fine Art and Antiques including Estate Paintings and Prints: Jean Dufy, Edward Dufner, Constantine Kluge, Henry Scott, Louis Fabien, Paul Jenkins, Jane Peterson, Robert Natkin, Nicola Simbari, Andre Lhote, Mane Katz, James Coignard, Louis Mignon, Marcel Gromaire, Jean Louis Forain, Ilya Glazunov, Vladimir Lebedev, Benjamin Eggleston, Randolph Coates, Mervyn Jules, Phillip Reisman, Hans Erni, Raymon Dilley, Roberto Matta, Salvador Dali, Frank Stella, Edmond Casarella, Tully Filmus, Kikuo Saito, Grant Wood, Louis Lozowick, Diana Thorne, Frederick L. Owen, David Siquieros, Alexander Archipenko, William R. Locke, Morris Henry Hobbs, Julius Delbos, E. Kovacs, Karl Richter, L. Vinciguerra, Lawrence Beall-Smith, Peter Max, Jack Wittrup, Large D'apres J. Vernet Oil, Cuzco School, and more being added. **Antique Furniture:** Regency Yew Wood Linen Press; Pair French Inlaid Marble Top Commodes; Chinese Export Lacquered Cabinet; Chinese Exuberantly Carved Dragon Chair; Antique Italian Painted Chest; Set of Six George III Chairs; **Quality Smalls:** KPM Plaque; Fine German Plaque of Maiden signed E. Volk; Georg Jensen 140 pcs. Acorn Sterling Flatware; Francis 1st Sterling Flatware Set; Silver Trays; Meissen,

Tiffany; Lalique; Pair Old Paris Jardineries; French Art Glass; Spode China Set; Royal Dux; Venetian Glass; Portrait Minatures; Bronzes; **Amazing Pair of French Majolica Seated Lions;** Collection of Antique English Dial Clocks; Large Selection of Orientalia to incl. Sumida Gawa, Great Cloisonee, Kutani, Chinese Export, Late 19th Cent. Ching Dragon/Phoenix Vase; Estate Jewelry to incl: Fine 38.50 cts. Natural Ceylon Cabochon Sapphire with Diamonds, Collection of Gemstones: Emeralds, Rubies, Demantoid Garnets, Gold; Chandeliers; Mirrors; Carpets; Phenomenal American Amusement Early 20th Century Mermaid/Merman Aquarium; English 19th Cent. Set of Plaster Intaglios; and so much more to mention. Please join us for an evening of auction action and make the buy of a lifetime!!!

Please see our website for a full catalog, information, and details at www.agopb.com.
 Absentee and Phone Bids Accepted or bid live on-line at www.liveauctioneers.com.
 FL au2082/ab3110 17% Buyers Premium