

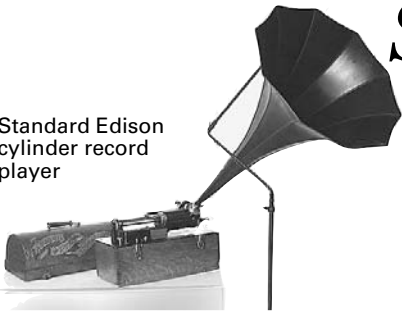
# Stephenson's Auction

1005 Industrial Blvd. Southampton, PA 18966

## September Antiques & Decorative Arts Two Day Auction

Friday, September 19th - 3PM  
and Saturday, September 20th - 10AM

Standard Edison  
cylinder record  
player



Plique à jour 14k  
pendant



Old bottles



Blue marked stoneware



Wedgwood Conchology and Skeaping



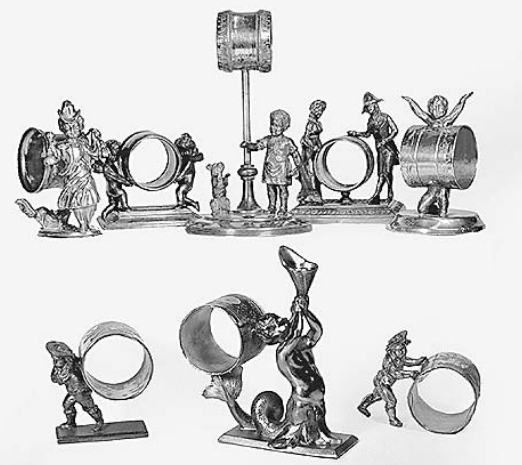
Grouping of Wedgwood basalt ware



Numabe w/c



Wedgwood Rosso Antico



Grouping of figural napkin rings



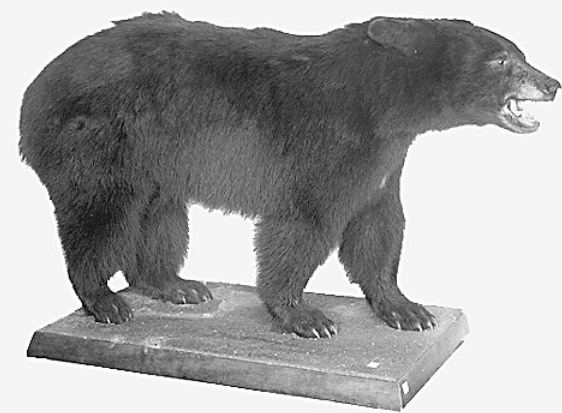
Pair of copper roof finials



Unsigned o/c late 19th C.



Grouping of sterling silver hollowware



Stuffed and mounted black bear



Bar Harbor wicker set

### Friday, September 19th at 3PM

**Porcelain, Ceramics, China, Crystal and Bronzes** - large collection of Wedgwood including Basalt ware and Conchology, collection of Chinese Export including Armorial, Canton, Fitzhugh, Lowestoft, and Rose Medallion, pair of Chinese robin's egg glazed 18th C. ginger jars, Lalique crystal seated lion and eagle figurines, Royal Worcester bone china 13" "Blue Angel Fish" by R. Van Ruyckevelt, Wedgwood majolica tazza, Meissen 10" porcelain vase, German porcelain horse drawn carriage with figures, 44" German porcelain urn on stand with cherub and floral applied decoration, German porcelain cased 23" keywind mantle clock with the four seasons depicted as cherubs, Royal Delft Pijnacker beaker vase, Staffordshire Toby jugs, Spode jasperware thirteen piece beverage set C.1880, Royal Doulton figurines, Beswick, Lladros, collection of Lundberg Studios art glass, Wedgwood jardiniere "Dahlrose", set of Herend "Blue Garland" dinnerware, gilt enameled and painted Italian terra cotta Madonnas, pair of dore bronze 24" candlesticks with winged dragons, French cut crystal and bronze boxes, French dore bronze picture frame with reclining cherubs, Theodore Ullman bronze figure of a sight hound, quadruple plated and cut glass epergne, Inuit soapstone carvings, 24" gilt bronze and cloisonné compote with dragon handles, bronze Napoleonic inkstand, and more.

**Furniture** - Walnut two piece corner cupboard C.1820, two piece poplar corner cupboard C. 1830, English mahogany and inlaid china cabinet with spade feet, six piece Bar Harbor wicker porch set with original paint decoration, walnut and bird's eye maple Empire butler's chest, inlaid mahogany Federal game table with serpentine front, mahogany Federal drop-leaf dining table, Empire mahogany four drawer chest, poplar dovetailed mid 19th C. drysink with hinged lid, burlled walnut Empire tall chest with side columns and paw feet, pine dovetailed blanket chest C.1840, three mother of pearl and satinwood inlaid settees C.1900, oak armchair with serpent head and clamshell carved back, mahogany blanket chest with two drawers and carved lid, walnut paint decorated four drawer spool cabinet, walnut Victorian center table with beveled brown marble top and acanthus carved apron and feet, walnut Renaissance Revival armoire with mirrored door and bird's eye maple lined interior, dragon carved Chinese rosewood bench, five piece wal-

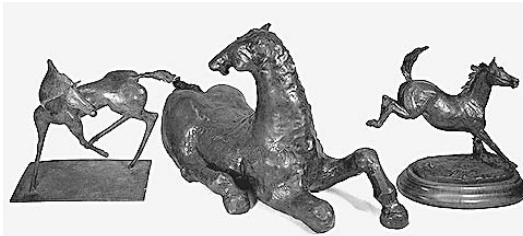
nut Victorian parlor set, ornate walnut Victorian what-not stand with mirrored back, pair of Maison Jansen style marble top nightstands with bronze ormolu mountings and galleries, oak slant front desk with gargoyle carving, C.1890 oak 12' store grain storage cabinet with bins, pair of Heywood Wakefield child's rockers with original paint decoration and stencils, Heywood Wakefield wicker sewing stand, Paul McCobb maple single pedestal desk and chair, and more.

**Artwork** - Heywood Hardy o/c genre scene, Marshall Johnson o/c marine painting, Martha Walter w/c, Arthur Meltzer graphite drawing cityscape with freight train, Earle Horter graphite drawing, four David Hahn acrylics on board "Oaks", "Sunlit Trees", "Old Barn in Buckingham", and "Bridge in Dublin, Bucks Co.", three Jos. Barrett oils "The Boating Party", "Snow Near Lambertton, N.J.", and "Buckingham Sunrise", Alice Kent Stoddard charcoal and w/c, Lloyd Raymond Ney w/c, Dora Maar graphite and colored ink, Ann Richard Brewster o/c, John Grabach charcoal, George Biddle graphite and colored ink of horses, Milton Denlinger o/c, two Zvi Raphaeli gouaches "Wailing Wall" and "Jerusalem Market", Jean Damier o/c beach scene, M. Louis Croissant w/c "Dance of the Gilded Lily", W. B. Gillette o/b woodland scene, Joseph Hirsch lithographs, Marianne Stokes w/c portrait, James Mitchell w/c "Steam Tug with Lumber Schooner", Dorothy White o/b gypsy girl, Leyton Veters Smith w/c, Oliver Geer o/c portrait, Patrick Dupre geometric abstract prints on sheet metal, G. H. McCord w/c landscape, Jos. Newman o/b seascape with figures, Arnoldis Oldenhave o/c Amsterdam street scene, Charles Gulayer o/c figures on beach, Lawrence Lebdusk o/b farm scene, two John Lear o/b "Large Pearl" and "White Face", Borio Lovet Lorki self portrait graphite, five David Ellinger gouaches on paper, David Ellinger rooster weather-vane, two Henry Martin Gasser w/c's, two Dwinnell Grant colored graphite drawings, Gerald Vivian Davis acrylic, Japanese wood blocks including Hiroshige Ando, collection of miniature portrait paintings on ivory and celluloid, bronze horse sculptures by Mike Smith, bronze sculpture "Arrival" by Stanley Wanlass, Christopher Pardell bronze "Legends" 1994, and much more.

**Also** - Antique and semi-antique hand tied Oriental carpets including four Sarouks, Heriz, and Kerman, mahogany cased grandfather's clock with Whittington-Westminster chimes, dore bronze cased French mantle clock with ram's head and swag decoration, New



Spode C.1880



Bronze horse sculptures



Man's 1 3/4 ct. and 14k diamond ring



Laliqne



24" gilt bronze and cloisonné compote with dragon handles



Marshall Johnson o/c marine painting



Joseph Barrett o/c



2 ct. diamond and 18k ring



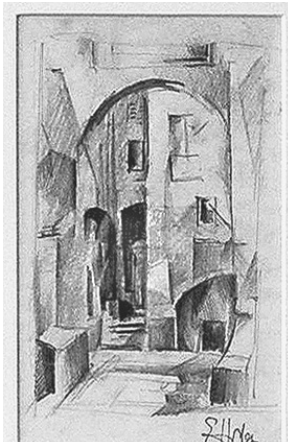
18k and diamond bracelet - approx. 6 cts.



Heywood Hardy oil on canvas



Grouping of Victorian figural toothpicks



Earl Horter ink and wash



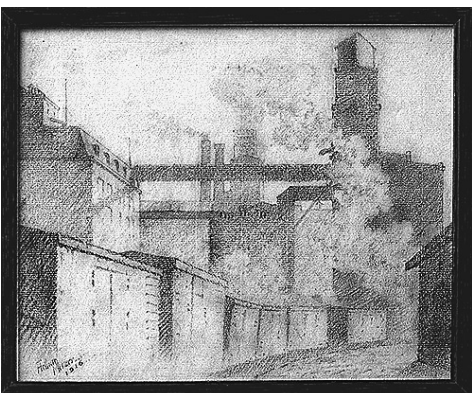
Pair of brass piano lamps



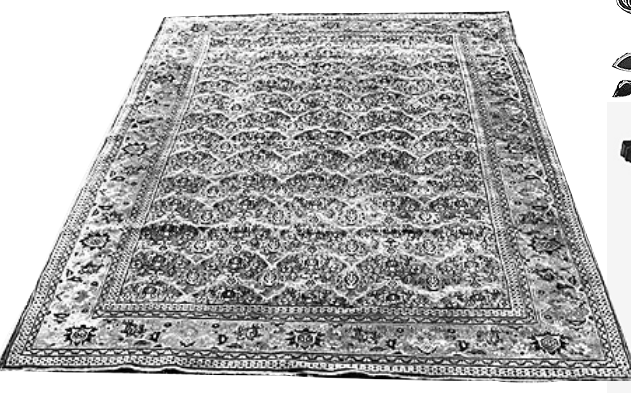
American Indian artifacts



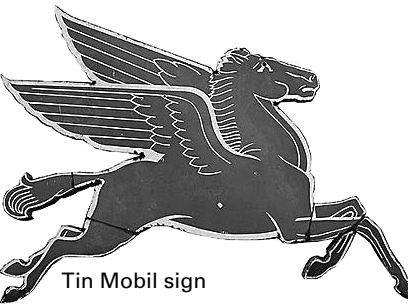
Pair of Victorian concrete garden figures



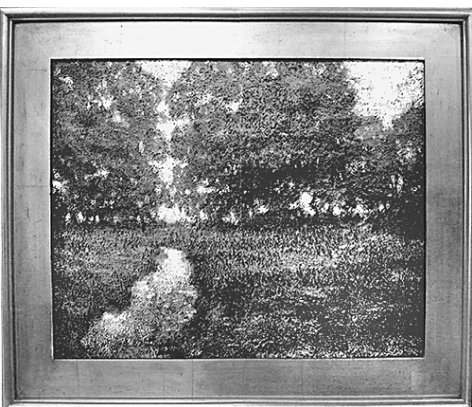
Arthur Meltzer graphite



Hand tied Oriental carpet



Tin Mobil sign



David Hahn o/b "Sunlit Trees."



Wedgwood Jasper dip



Walnut corner cupboard C.1830



Mahogany cased grandfather's clock

Haven Occidental 8 day striking parlor shelf clock, brass and marble cased French clock, Parker brass hanging clock, New Haven brass cased clock with toadstools and gnomes depicted on case, Ansonia slate cased mantle clock with malachite inserts, oak cased octagonal drop clock, Standard Edison cylinder record player with crane and morning glory horn, Home suitcase Edison cylinder record player, mounted and stuffed black bear, leopard skin, painted cast iron cockatiel doorstop, blue marked stoneware crocks and jugs, Chinese Export porcelain lamps, Chinese Export garden seat, pair of late 19th C. concrete garden cherubs on stands, tin Mobil horse sign approx. 7', bronze 40" outdoor lantern with acanthus leaf scroll decoration, pair of copper roof mountings with mushroom finials, set of five carved and painted 19th C. Italian 15" cherubs playing musical instruments, pair of brass dolphin andirons with dolphin logstops, horse hoof and silver mounted inkwells, Forestry Cutless WWI standard bayonet with scabbard, collection of Russian Orthodox 19th C. brass and enameled crosses, early bottles including 20" American olive green demijohn 1750-1800, 25" American utility bottle with threaded lid dated 1877, and an American chestnut flask C.1780, and much more.

**Saturday, September 20th at 10AM**

**Silver, Jewelry, Miniature Objects of Vertu** - Collection of over one hundred sterling silver and plated napkin rings - many are figural, Tiffany "Spider web" bronze and slag glass dresser box, collection of silver salts and toothpick holders, collection of Halcyon Days enameled dresser boxes, carved jade and malachite animal figurines, ivory figurines, ivory net-sukes, collection of glass and porcelain dresser boxes, and more.

Four piece sterling silver tea and coffee service, Indian silver repousse teapot with cobra handle, Gorham round sterling silver platter, pair of Arrowsmith sterling silver compotes, Tiffany sterling silver plaque 1928, Frank W. Smith Silver Co. sterling round 13 1/2" platter "Chippendale", enameled Danish sterling silver master salt set in case, sterling salts with cobalt glass inserts, set of Towle sterling silver flatware "Candlelight" service for eight, Reed & Barton sterling silver fruit bowl, Continental silver oval serving bowl with figural cartouches on border, Watson Co. sterling silver fruit bowl, Hyman Berg & Co. sterling silver oval center bowl with pierced sunflower border, pair of Dominick & Haff sterling silver taz-

zas with square bases, assorted sterling silver flatware serving pieces, Continental silver sugar shaker, Russian silver notepad and pencil stand dated 1937, Continental 800 silver figural repousse pierced tazza, 800 silver repousse dresser box, and more.

**Jewelry** - Diamonds including lady's platinum solitaire engagement ring with approx. 2 carat diamond I color SI1 clarity, gent's 14k white gold gypsy ring with approx. 1 3/4 carat diamond J/K color SI1 clarity, lady's 5 stone ring with approx. 1 1/2 carats TCW, platinum eternity band, gent's 5 stone ring with approx. .80 carats TCW, platinum solitaire engagement rings, platinum filigree solitaire engagement rings, cluster rings, man's 14k diamond and ruby gypsy ring, brooches, bar pins, contemporary 18k white gold bracelet, lady's platinum wristwatch, earrings and necklaces. Gold including 14k gold bangle bracelets, charm bracelet, 9k gold gate bracelet, 14k yellow gold filigree bangle bracelet, garnet bracelets, 14k and 18k men's and lady's rings with colored stones, necklaces including Omega, chains, watch chains, insect pin with colored stones, carved coral and diamond brooch, lava cameo, pearl necklace. Jade including multi-color carved hinged bangle bracelet with 14k gold mountings, 14k link bracelets, brooch with diamonds in 14k gold, carved necklace with pearls, pendants, rings and earrings. Ivory including belt, carved cameo, hand motif pendant with semiprecious stones. Bohemian Garnets including hinged bangle bracelet, brooches and rings. Costume including early bakelite hand motif pin, lucite goldfish bowl necklace, Venetian glass beads, large amber necklace, Mexican sterling silver hinged bangle bracelet with amethyst marked Taxco with eagle stamp. Watches including two lady's Elgin 14k gold pocket watches, Gruen Veri-Thin pocketwatch, French 800 silver pocketwatch with hunting case, Corum wristwatch, Philippe Charriol wristwatch, Bertolucci wristwatch, Katherine Tess wristwatch. Misc. including petit-point purses, jeweled brass dresser trays and more.

**Inspection: Thursday, September 18th 3PM to 6PM, Friday, September 19th 1PM to 3PM, and Saturday, September 20th 8AM to 10AM**

15% buyer's premium in gallery • 20% buyer's premium to ebay live bidders (215) 322-6182 ~ AH-000130