

# ANTIQUES & COLLECTIBLES ESTATES AUCTION

## SATURDAY, October 25, at 12:00 NOON

### At the Polish Club, Rt. 57, Agawam, MA

(Take Rt. 57 to the end, bear right 2 lights, left 3/10 mile)

Estates from Springfield, Agawam, Westfield, Southwick, MA, and the partial contents of a Connecticut antiques and gift shop.



**FURNITURE:** Black walnut (2) door side by side with applied carvings, circa 1870, Victorian cherry fire place mantle with applied carvings, OAK: Art Nouveau china cabinet, Victorian C-roll top desk, Victorian lamp tables, round table. Queen Anne style tiger maple desk, cherry tilt top table, maple dining table, Mahogany: secretary, (6) drawer chest on chest, (2) record cabinets circa 1910, rockers, Hitchcock style chairs, table and (6) carved chairs, vanity. Victorian fancy wicker rocker- signed Heywood Wakefield, (5) ice cream parlor chairs, (3) piece metal bistro set, (5) pieces of wicker, (4) antique bamboo chairs, pine book case, Empire chest, Victorian black walnut chairs and love seat, contemporary bed room sets, tables, and chairs, mahogany tobacco stand, Victorian fancy what-not shelf, Victorian walnut slant front desk with applied carvings, Nichols and Stone stenciled rocker, antique caned chairs, & MUCH MORE.

**ACCESSORIES:** Rookwood pottery ewer, dated 1891 signed Emma D. Foertmeyer, antique violin bow signed "Tourte", Roseville (3) piece coffee/tea set, Gorham sterling silver set for (8), sterling silver: ladles, candy holders, butter holders, letter opener, pair of candelabras, antique reverse painted lamp with light up base-circa 1900, Victorian Gone With the Wind lamp w/ floral design, Arts and Crafts wrought iron lamp, crystal table lamp, (6) silver spoons circa 1810, toy truck collection: (6) trucks; Buddy L, Keystone, & Wyandotte, (5) Sunoco trucks, cast iron fire wagon with drivers and horses, NYC Finnegan baggage cart wind-up toy circa 1930 (Unique Art Mfg. Co), Vintage Flipping Monkey wind up toy, circa 1950, Shoot-A-Loop metal toy-signed Wolverine, metal toy tractor, circa 1950, child's toy typewriter metal circa 1930, pocket watches, antique reverse painting on glass with fancy Victorian frame, antique yellow ware bowls, Victorian silver plate tea set, sterling silver jewelry, antique Estate Oriental rugs: (8' x 10') Persian Sarouk, (6' x 4') Persian Lilahan, (3' x 5') Persian, and (5) other new Oriental rugs-room size and runners, Coca-Cola round advertising sign circa 1950, pressed, cut, and Depression, Bristol satin glass vase, Seth Thomas & Waterbury mantle clocks, boxes of Christmas items, paperweights, antique porcelain pitchers and bowls, Victorian art glass pitcher, antique prints, WWI-II items, pair of Gorham crystal candle sticks, Arts and Crafts design organ dated 1898, Limoges platter, Antique Nippon chocolate set, antique (10) piece luster set, Shelley cream sugar, tray set, Bohemian cut glass decanter with (6) glasses. Cranberry glass collection, Victorian photo album with photos, quilt collection: antique hand made large Quilts circa 1900 - Log Cabin design, checkered red and white, and other quilts, antique post card collection (black memorabilia post cards circa 1890), blue and white Canton bowl, fancy (2) mold blown aqua bottle, Carnival Glass vase, (2) Royal Doulton figurines, (2) Royal Doulton Toby mugs, early Mr. Peanut serving spoon, Goebel (3) piece child's plate, cup, and bowl set, Hummel double candle holder, Hummel items: figurines, double candleholder, Waterman's fountain pen in box, (2) early Staffordshire figurines-circa 1840, (6) piece Lionel RR set of trains c. 1960, AHM railroad set in OBs, Seiko travel clock in box, copper and brass antique fire extinguishers, signed Fenton items, signed Capodi-Monte items, Heustis & White antique oval crock with blue floral decoration, antique violin with case, coins, Victorian leaded stain glass windows, costume, old marbles, and antique jewelry and much more.

**TERMS:** 10% Buyer's Premium. CASH OR CHECK • INSPECTION: 10:00 am Day of Sale

**ROSSI AUCTIONEERS & APPRAISERS AGAWAM, MA (413)-789-1284**  
(www.Rossi.alphanine.com for more inventory)

## FOR A CHRONOLOGICAL LISTING OF AUCTION ADVERTISING IN THIS ISSUE, SEE PAGE 66.

# STEENBURGH

ESTATE AUCTIONEERS & APPRAISERS SINCE 1972

## Autumn Auction in Haverhill, NH

2 Days - 1st Day Coins - 2nd Day Antiques & Accessories

### Thursday Oct. 23 @ 1 PM

### and Friday October 24, 2008 @ 10 AM

Alumni Hall, 75 Court Street, Haverhill, NH

For our fall foliage sale we are trying something new - the first day will be coins and currency and the second day will be antique furniture and accessories. The coin auction will begin at 1 PM - sorry no phone bidding you must be present and have examined the coins in order to bid. For day two we have been asked to sell at public auction items from the personal collection of the late Ruth Degennaro. In addition we have gathered items from homes in Laconia, NH and Waits River VT. The following is a partial listing.

Please see our website for images of many items: [www.steenburgh.com](http://www.steenburgh.com)

#### DAY 1 - Thursday October 23, @ 1 PM

**Day One: Coins - AUCTION BEGINS AT 1PM** - Preview from 11 AM - 1 PM - Over 400 lots of coins and related material: THE FOLLOWING IS A VERY PARTIAL LIST : **YOU MUST BE PRESENT AND HAVE EXAMINED THE COINS IN ORDER TO BID - NO PHONE BIDS ON THE COINS:** GOLD TO INCLUDE: 1862 1 dollar gold; 1901 5 dollar gold; 1907 2 1/2 dollar gold; 1915 5 dollar gold; 1908 1 dollar gold; 1910 10 \$ gold coin; 1915 2 1/2 \$ coin; 1926 2 1/2 dollar gold; 1929 2 1/2 dollar gold; 1912 2 1/2 dollar gold; 1901-S 5 dollar gold; lots of 19th and 20th c. silver dollars; US 10 \$ Gold Certificate Note 1922; US 20 \$ Gold Certificate Note 1922; US 100 \$ Gold Certificate Note 1928; US 10 \$ Gold Certificate Note 1928; US 5 \$ Silver Certificate 1934 A; US 20 \$ Gold Note 1928; Confederate Currency; 1950 D - 100\$ ; lots of US currency various denominations; Incredible collection of Silver Dollars: lots of Morgan Dollars to include: certified 1878 CC; other cert. 1878, 1881 S, 1883 CC Gem; 1884 CC; and many more others incl. 1878 CC, 1880 CC, 1882 CC, 1883 CC; 1878 8 over 7; 1881-S proof like; 1887 7 over 6; 1875 20 cent pc.; lots of Commemorative silver dollars; Large Cents, half, cents, Flying Eagle cents, modern proof silver dollars; many more proof coins -all will be sold in order-call or email - for a numbered list.

#### DAY 2 - Friday, October 24, @ 10 AM

**Day two: Furniture** 19th c. 2 door cupboard with raised panels; pine step back cupboard with diamond glass door top; sack back Windsor armchair - old repairs; early 19th c. Windsor child's chair in old red paint; early 19th c. chimney cupboard w/ raised panel doors; lift top VT blanket chest with folksy cut out base in yellow and black grained paint; excellent Victorian oak step back cabinet with high relief carving and glass door top; unusual Victorian column pedestal with revolving top; Victorian oak server with carving; Vict. mirror back sofa; large tree stump butchers block on legs; Grandfather clock w/ country pine case - brass works; other early 20th c. grandfather clock with mahogany case and chimes; 4 poster tester bed; fan back Windsor; Queen Anne yoke back side chair; continuous arm Windsor; Queen Anne style wing back chair w/ spool turnings; great modern 10 ft. pine farm table with post legs and wide board top; multi drawer store counter top spool cabinet; oak kitchen chairs; 15 drawer pine apothecary cabinet - refin.; multi drawer step back cabinet with cupboard top; 19th c. pine country sofa - recovered; mahog. multi drawer sheet music cabinet; maple cabinet w/ double glass door front; clean Hoosier cupboard; Vintage wicker sofa , chair and side table; Childs blue painted bedroom set; Victorian walnut commode; selection of good 1900s oak side tables; elaborately carved high back oak bed ca. 1900; fancy 4 tier bookcase; Larkin bookcase w/ double glass doors; oak dressers; oak kitchen chairs; arts and crafts oval table w/ Lambert label; much more furniture.

**Early Photography:** collection of daguerreotypes, ambrotypes, tintypes; cabinet cards, and cdvs; lot of 5 x 7 negs. of early Colorado scenes; Real Photo postcards; tissue stereoviews; cyanotypes, and more; Carbutts Dry plate lantern 1882; post mortem of baby in Carriage;

**Glass China & Pottery:** 14 in. blue and white Chinese charger; Fort Edward

stoneware jug with blue bird - drilled; Ft. Ed. crock with blue flower; large Mettlich ironstone pitcher; 2 blown demi johns; Beichs store jar; selection of stoneware crocks and jugs; misc. yellow ware bowls; Ridgway chamber set; Staffordshire transferware platter; Masons blue American Marine; selection of Roseville and McCoy pottery; other good glass and china;

**Accessories:** wonderful 19th c. teachers alphabet board; pr. wrought iron standing candleholders; ca. 1920 table lamp with domed frosted and etched shade; multi drawer glass front spool cabinet w/ mirror glass sides; Singer Featherweight sewing machine; 4 drawer walnut spool cabinet; large handmade doll house complete with furnishings; misc. collection of license plates; misc. old toys and games; Victorian paper dolls; postcards; album of tradecards; die cuts, etc; large Santa Litho in frame; Puck and Santa Steiff dolls; set of litho wooden blocks; brass Skaters lantern; lot of baseball memorabilia Red Sox, Cubs, Yankees 1941-61; WWII patches, medals, and paper; misc. advertising blotters, etc.; large selection of baskets; firkin; wooden birdcages; number of good quilt tops; miniature sewing table; walnut spinning wheel; quilt racks; floral hooked rugs; wooden treen funnel; sets of snow shoes; 2 good butter prints; art nouveau brass pin tray with sheepherder; child's late 19th c. toy pull cart; childrens abc plates; cast iron ram doorstop; Cresota advertising tin litho matches; selection of leather bound books; Abe Lincoln figural bookends; H.I. Baldwin and Co. Grain advertising cast metal inkwell shaped like corn cob; Bronze lamp w/ sculptural dragon design; Vedette wall clock; hanging Vict. corner cabinet; selection of fancy silver plated serving items; folksy painted market peddlers cart w/ iron wheels; blue and white homespun wool coverlets; 62 pieces Lunt sterling silver flatware service; 35 pc. International Sterling Blossom tin pattern;

**Vintage Toys:** large collection of 20th c. wind up toys to include: Courtland Rocking R Ranch; Marx skybird control tower w/ 2 planes; unmarked celluloid Mickey Mouse windup acrobat; Gama wind up duck w/ ball Germany; Demented looking bunny flipping book wind up; tin wind up girl w/ hula hoop; Marx Wee Scottie; tin cat chasing ball w/ pushdown tail action; walking lovely bear in orig. box; many others;

**Paintings, Prints, Artwork:** many Sawyer and Nutting Prints; 20 x 24 in. portrait of a girl signed A. Nybalm; oil on academy board of baby chickens in Vict. frame; framed pastel of birds; other prints and pictures.

**Directions:** From southern NH area and north take Interstate 93 to NH exit 26 (Plymouth) go west on Route 25 for approx. 33 miles to the junction of 25 and Route 10. Go south on Route 10 for approx. 1 mile to the Haverhill Common and follow auction signs to Alumni Hall. From southern VT area and north take Interstate 91 to exit 16 (Bradford, VT), take Route 25 east across the Connecticut River to Route 10 and the blinking light in Piermont, NH. Proceed north on Route 10 for 5 miles to Haverhill Common. Follow signs.

10% Buyers Premium - Preview: 11 - 1 on Oct 23 and 8-10 AM on Oct 24 -

**Archie H. Steenburgh / Joshua W. Steenburgh**  
Auctioneers & Appraisers  
NH Lic #2194 / 2754

Terms: Cash or check with proper identification - Sale # 820 & 821 Per order of various estates and individuals

# ANTIQUES & COLLECTIBLES NH COUNTRY AUCTION

## 9:30AM WEDNESDAY OCTOBER 22

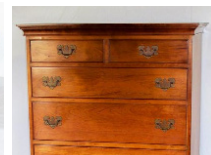
### (Insp.8 - 9:30AM Day of Auction)

Location: In Heated Tents,

386 Suncook Valley Hwy (Rte. 28), Epsom, NH  
(I-93 to Concord, NH, Exit 15E, follow Rtes. 393 & 4 East 10 miles to Jct. Rtes 4 & 28, then South 2 miles on Rte.28)



- \*FURNITURE
- \*GLASS & CHINA
- \*STERLING
- \*JEWELRY
- \*BOOKS
- \*PAINTINGS & PRINTS
- \*CLOCKS
- \*TOYS
- \*MANY COUNTRY COLLECTIBLES



For your pleasure and convenience we have moved the Antique/Collectible items from a number of Estates & homes to the above location. This will be another full day treasure packed Auction worth the trip, featuring an Estate from New London, NH with exceptional custom, reproduction and Quality Furnishings. **PARTIAL LIST INC.:** Furniture: Custom L & JG Stickley cherry Q.A. highboy, L&JG Stickley cherry dresser, night stands & Q.A. bed, L&JG cherry dl dining table & 6 chairs, L&JG cherry server, Kittenger Q.A. low boy, Kittenger Q.A. tea table, Kittenger wall shelf, custom mahog. swing leg stand, custom spider leg stand, custom snake ft. floor lamp/table, custom Q.A. wing chair, custom cherry dressing table, custom cherry silver chest, custom card table, mahog. Empire marble top dresser, Empire chest, Empire mirror, mahog. bookcase, marble top Vic. chest, oak parlor table, bow glass china closet, Mission oak settee, library table, S-Curve roll top desk, oak hall tree, d.f. oak lady's desks, oak chests, oak youth desk, dl oak table, Morris chair, sq. oak table & chairs, oak sideboard, oak commode, side by side, 1940's mahog. dbl. ped. table & 6 chairs, mahog. china cab., mahog. cor. china cab., 2 part mahog. hutch, mahog. chest, dresser top mirror, 2 tier stand, muffineer, pine commode, cottage pine chest & bed, walnut gateleg table, walnut hall table, ptd. marble top commode, cedar chests, rockers, Little Jewel Piano Co. child's upright piano, high back piano stool 2 organ stools, oak file boxes, other furn; ... **ACCESSORIES** inc: 12 Waterford wine glasses, cut water glasses, collection of marigold Carnival glass, ruby, Depression & Fostoria glass, VanBriggle vase, flo blue pitcher, lustreware, tea leaf pitcher, haviiland chocolate set, china cups & saucers, asst. Lenox, 12 china florals, Spode hound hunt china set, Royal Doulton hound hunt cup & lamp, Beswick bass figurine, Hummel English Pointer dog figurine, Pointer & Pheasant figurine, lg. set of brown Hull & Plattzgraf china, Wedgewood Queensware china svc/8, asst. blue willow ware, 6 Adams transfer plates, 8 bird motif plates, Williamsburg Potpourri Wedgewood china svc/12, pr. Oriental vases, Beleek cream & sugar, 4 Hummel figurines, 3 Hummel cats, other glass & china; ... **CLOCKS:** Colonial Mfg. Zeeland 5 tube grandfather clock, Chelsea banjo clock, Seth Thomas beehive & hump back clocks, Waltham 17 j pocket watch; ... **JEWELRY:** diamond .75 ct. engagement ring, 14k gold ring w/1 ct. diamond, plat. ring w/6 ct. dia., plat ring w/ 1/2c center dia., 14k hunting dog stick pin & 7 others, cameo broach, gold ring w/lg. opal, lg. asst. costume jewelry, sterl. top hand bag;... **STERLING:** 60 pc. sterl flatware set, sterl. plates, cups, candlesticks, compote, 24 pcs. Caldwell & 16 pcs. Tiffany flatware, Royal Danish sterl. flatware svc/12, sterl. match holder, custom Williamsburg brass lighting, custom mirror back sconces, pr. cranberry elec. lamps, linens, furs, hats scout uniforms, scout bugle, Legion, police, fire clothes, hats, swords, 2 rm. sz. Oriental style rugs, radios, 3 guitars, banjo; ... **LIONEL TRAINS** inc: 6110 engine & tender, Texas Special A&B unit, 624 Chesapeake Ohio diesel loco, 15 cars most in boxes & some layout, Heiliner - The Heil Co. truck, stamped metal child's dump truck, Texaco tanker ship w/box, cloth body compo doll; ... Stereoptic viewer & cards, postcards;... **BOOKS:** lg. amt. of books inc. children's, Hardy Boys, military related, Zane Grey, etc., 15 vols US Naval Operations WWII, 1865 Sherman & His Campaign, 1887 5 vols. Count of Monte Cristo, 1928 AMC White Mtn. Guide w/map, 1969, 71, 76 guides, Ortelios Atlas page hand colored of Morocco; **PAINTINGS & PRINTS:** Emil Van Marcke 34" x 23" o/c of Cows, A. Ramus o/b of thatched roof home, Troy Kinney dry point of a dancer, 1881 Iroquois print on linen, Secretariat & Hound Hunt prints, 2 Bessie Pease prints, Godey's prints; ... **COUNTRY COLLECT.** inc: Mahog. tilt top tea table, fan front blanket chest, pine deacon's bench, pine ice chest, Sheraton style stand, 4 dr. pine chest, pine work table, pine hutch, trunk, red enamel kitchen set, butcher's block, treadle sew machine, Edison floor model phonograph & records, picture record w/Nipper holder, 2 custom barn board hutches, taper leg stand, stenciled rocker, copper bucket, pots, kettle, still, funnel; c.i. boot jack, c.i. pans & kettles, brass P.O. boxes, cottage & ram doorstops, ctry. kitchenware, cranberry scoop, wooden skis, snowshoes, wicker creel, wagon jack, pr. cart wheels, Enamel Foss Chocolate sign, Coke thermometer, 1942 Pepsi calendar, ruby chandelier, wicker carriage, child's architectural blocks, tool chest, Stanley #78 plane, Bailey 4,6,7,8 planes, other planes, huge 2 person chainsaw, U.S. SA1918 bayonette & 3 others, uniforms, USN Mark 2 knife, Navy type bell, sleigh robe, carriage lanterns; Licenseplates inc: NH 1915, '17, '18 enamel, 1919 & 1924 ptd., pr. NH 1929, '35, '38-'39, '76 Alaska Governor #1 plate, N.W. Territories Polar Bear Plate, other NH, US & Canada plates; Model A & T headlights, Model T steering wheel, Asst. old car gaskets, voltage regulators, break & shift levers, rubber mounts, etc. ... From 100 year old Hardware Store Outlet, Boston: Bubble Glass truck reflectors MIB, Mazda bulbs, telegraph keys, vaporizers, night lights, deep belly crosscut saws, grenade carriers, hockey sticks, auger bits, Ford wrenches, etc.!!!

**\*\*\* AUCTION HELD REGARDLESS OF WEATHER, DRESS FOR THE WEATHER !!! \*\*\***  
**TERMS:** Cash or Check w/ Proper ID \* 10% Buyer's Premium  
\* No Absentee or Phone Bids Accepted  
All Items Sold As Is Subject to Error or Omission  
\* All Sales Final \* Heated Tents \* Chairs \* Catered

### GEORGE S. FOSTER III, CAI

THE COMPLETE AUCTION SERVICE CO.  
PROFESSIONAL AUCTIONEER & APPRAISER AUCTION AND APPRAISAL OF ANTIQUES & COLLECTIBLES  
ESTATES \* SPECIAL COLLECTIONS  
LIQUIDATIONS \* CONSIGNMENTS  
386 Suncook Valley Hwy., Epsom, NH 03234  
TEL. 603-736-9240 NH Lic. # 2149  
FAX. 603-736-3339 E-Mail Address: GSFoster3@aol.com Better Business Bureau Accredited Business; USPAP CERTIFIED  
Member: Certified Auctioneer's Institute, National and NH Auctioneer's Assoc., Certified Appraisers Guild of America,  
Fall, For the Fun and Excitement, of a New Hampshire Country Auction



779 Jeffers Hill Rd., Pike, NH (603) 989-5361 Email: [josh@steenburgh.com](mailto:josh@steenburgh.com)  
[Archie@steenburgh.com](http://Archie@steenburgh.com) Website: [www.steenburgh.com](http://www.steenburgh.com)