

Reminder

Only 3 Miles From NY & Mass Line

RALPH FONTAINE'S
Heritage Auctions, Inc

High Quality, Fast Pace, Honest Auction Gallery
announces a

Super Multi Estate Auction

on

Friday, October 16th

Discovery Auction at 5 PM • Main Sale 6 PM
Preview: Thursday, Noon-6 PM, Friday, 4-5 PM

Location: Rt 22, Canaan, NY

Less than 3 miles north of the Mass Pike and New York Thruway (Exit B-3)
(1 mile south of Route 295) * (6 miles south of Route 20)

413-442-2537 • 518-781-3650

See last week ad pages 112-113 for more photos...

Only 3 Miles From NY & Mass Line



Great o/c signed R E Arnold



Spectacular rosewood Jelliff marble top center table w/maidens heads



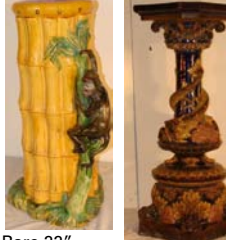
Exquisite pierced carved rosewood crib with fold down side (NY maker)



The best Herter quality marquetry inlaid center table w/all over bronze ormolu & spectacular inlaid top (the best!)



Stickley taborette & stool



Rare 22" majolica umbrella stand w/monkey

Super 40" majolica pedestal w/dolphins



We will be selling over 400 great lots of Victorian, oak, period, custom & Mission, furniture, also nice smalls, lamps, clocks, advertising, toys, bronzes, paintings, china, glass & smalls.

Many items were part of a Stamford CT mansion, also a complete Averil and Williamstown Estate

5-6 PM Discovery Sale: (We will sell 100-120 lots from \$10 to \$500.) This part of the auction will go extremely fast, consisting of oak, Victorian, country furniture, super



The most exceptional 10 piece heavily carved oak Horner quality parlor set incl 2 matching sofas, 2 large 7" king chairs & 6 tall back chairs with lion head arms and winged griffin chest with Northwind head in original finish



Super 4 piece Jelliff parlor set



smalls, toys, crocks, lamps.



6 PM Main Sale: Over 300 Quality Lots

TERMS: Cash or good check, Visa, MC, Discover ~ 15% Buyer's Premium, Absentee Bids Accepted, Shipping Available, Catered By Samel's Deli

Call Ralph Fontaine

413-442-2537 or 518-781-3650 Gallery

www.fontaineheritage.com

Visit us on the web at
AntiquesandTheArts.com



LLC

Tues, Oct 20 @ 6 PM

TOLLAND AGRICULTURAL CENTER
(ROUTE 30), VERNON, CT

A well diversified sale which includes lots from several estates
Sunset special outside at 6 PM

10% Buyer's Premium

Directions: Take exit 67 from I 84, turn left if coming from West, right if coming from East. Proceed to traffic signal (Route 30) and turn right to 5th driveway on right.

Phone 860/646-5663 - Day of sale 872-1828

ESTATES AUCTION

ANTIQUES-COUNTRY-VINTAGE

SAT., OCTOBER 17th 9:30AM

TOWNSHEND AUCTION GALLERY

RTE. 30, TOWNSHEND VT
(15 MILES NORTH OF BRATTLEBORO)

Yet another auction jam packed with fresh antiques from a Brattleboro Vt. estate, a small Hinsdale NH estate and estate residuals. This Sale is sure to please even the most discriminating buyer as there is lots of great oak and mahogany furniture, a period tiger maple desk as well as other early American furniture and country items. A good selection of antique and modern fire arms, Selection of good taxidermy, lots of interesting country smalls, fine china & crystal, decorated tole, artwork and more. Be sure to check our website often for additional photos and updates.

Exhibition is from 2-5pm
on Friday and at 8:30am on Saturday

A gorgeous late 18th century Chippendale tiger maple slant lid desk w/fine cut bracket base, true and straight---An early 19th century three drawer Vermont lift top blanket chest---A beautiful "Jackson Press" hunt board expertly refinish An early Vermont made two part secretary w/fancy cut base, book cabinet top---A wonderful Victorian tall chest w/unusual configuration of drawers, fancy brasses and carvings---A lovely mid 19th century cherry five drawer country chest w/Ct. Valley cut base and another early four drawer Sheraton cherry chest---A extra fancy Victorian golden oak fall front desk---A sweet little diminutive Windsor Nanny's bench/rocker---A wonderful little Victorian corner cabinet w/glass door---Pretty, pretty golden oak six leg dining table and a set of ten (yes ten) Windsor style bow back dining chairs---An absolutely stunning tiger maple server w/finely taper legs (this is a contemporary piece however it is exquisite quality and absolutely beautiful) Also there is a pair of shaped top tiger maple side stands---Most beautiful formal buffet w/fancy mirror, back cabinet etc.---An extra pretty Victorian settee---A nice country oak standing curio/china and a super oak framed showcase w/curved glass---A fine set of Hitchcock pillow back dining chairs w/original sharp stenciling---A pristine mahogany dining table w/double pedestal French base---A nice wicker carriage and a great country sled w/curved runners---A super nice oversized two drawer oak princess chest w/extra large beveled dressing mirror in orig. finish---A superbly refinished four drawer cottage chest---A very distinct golden oak tall chest w/large round yoked mirror, gutsy brass pulls etc.---Empire parlor set in like new condition---A superb Mission style day bed---

A nice little gun collection including a super nice 1878 US Springfield 45x70 rolling block, full stock etc. #488524---A fine dated 1900 "John Smyth" choke bored twelve gauge single shot---A N.Y. American Gun Co. (rare collectors item) double open hammer shotgun---A very pretty heavily engraved twenty ga. Double open hammer "Stanley Bros." shotgun---Winchester Model 90 22 pump w/octagon barrel and a sweet little Remington 22-A 1912 pump trappers rifle---An early 300 Savage #415123 w/a powerful Simmons scope---An exceptional Ithaca Featherlite 12 gauge Pump model 37 w/great bird & dog engraving JC Higgins model 31 22 varmit rifle w/scope---WWI & WWII military rifles--- Also a Civil War Officers sword accompanied by a photo of The Third N.H. Volunteer Infantry battle flags "Struck by Over Forty Rebel Bullets at Deep Run Va. Aug 16 1864"---"Richmond Lieutenant General U.S. Grant" ribbon (framed)---Several bayonets and sharps---An original "James Dixon & Sons" brass shot flask w/fancy embossed game animals---Two early powder horns---Early city map of Hinsdale N.H.---Many great taxidermy mounts including a black bear rug; a full mount Fisher Cat and a full mount Red Fox; Also a coyote half mount on snow shoe; a super nice Elk mount and others--- Lots of great country and other smalls and collectables including a wonderful Shaker (?) nine drawer graduated step back spice cabinet---A great old Shaker pail w/bail handle in original old red paint---A fine selection of decorated tole ware---Early pewter pitcher w/eagle finial "Williams Adams Sheffield Eng."---A set of three graduated tin measures---Very pretty silver plated covered serving piece "Pairpoint"---Fancy Reed & Barton pewter tea server---Old pierced tin hanging shade---Early pewter sugar & creamer "N.G.Wood Boston" ---A beautiful enamel painted lite blue compote in wedding drape pattern---Selection of old cut crystal table items---A pair of blown crystal brandy decanters---Ornate Victorian five bottle castor set w/matching bottles---Rare Little Hampton seltzer bottle "Henry & Constable Brewers"---"Drink Moxie" wooden adv. Box---Early split swing handle basket w/inverted bottom---A fancy Victorian double ink station---Nice selection of exceptional antique oil lamps---"The Singer Featherweight" sewing machine in original box (like new condition)---Very ornate copper wall paper stamp---Many old toys including Structo car carrier; Buddy L Kennel truck; Mobil fuel carrier and others---Early baseball mitts, Joe DiMaggio glove, first base glove "Nipon" Byron Wis., and others---Antique cast iron motorcycle w/side car, Autocar, race cars, fire engine pumper etc.---Childs depression green lemonade set in orig. box---"Poosh-M-Up" four in one pinball game---Vivid graphics Caroom board---Several folk art canes---Artwork includes a period deep walnut oval frame w/original Victorian portrait---Walnut framed them on fabric---Early 19th century alphabet sampler---Black and white litho "Turnbury Castle Ayrshire Scotland---A great pair of Victorian portraits---A collection of 1950's Pa. RR calendar prints (real nice)---Also a chest full of antique tools yet to be sorted, inc. rosewood squares, planes etc. Special Interest is a very rare twenty two drawer Rail Road Map cabinet (each drawer presents a separate states RR connections by hand colored mappings)... Also an F-350 fourteen foot box truck in running condition...

www.townshendauctions.com

TOWNSHEND AUCTION GALLERY
Where honesty & integrity count

802-365-4388

AUCTIONEERS: H.K. "KIT" MARTIN • ART MONETTE
VISA/MASTERCARD 12% BUYERS PREM. (2% DISC. CASH/CHECK)
NOT RESPONSIBLE FOR ERRORS OR OMISSIONS
ALL SALES FINAL



ESTATES AUCTION

Antique Country & Oak Furniture, Textiles, Fine Art, & Other Accessories

Saturday October 17, 2009 10:00 a.m.

Bradford Community Center, Route 25 South, Bradford, VT

Join us in our "winter" quarters for our final sale of the 2009 season. We will be selling a wide variety of items from a Woodstock, VT estate; the significant "downsizing" of a beautifully appointed Lyme, NH home; and more oak & wicker furniture from a St. Johnsbury, VT Masonic Hall.

Partial Listing -- for pictures & more go to
www.eatonauctionservice.com



Early cupboard



Windsor chairs attributed to Woodstock Vermont maker



Early sewing box



Signed 3 color homespun



Early photos in Union cases



Pocket watches & fobs

Furniture: 8 early Windsor chairs, (3 birdcage, 3 stepdown, & comb-back chr & rocker) attrib to Woodstock, VT chairmaker John White (1803-1865) & descended through the family; early cupbrd w/panel dr & old mustard over old blue pnt; 7 pc Vict chery wardrobe w/chest flanked by mirrored armoires; Victorian burl veneer secretary; drop leaf tbl w/rope legs; Empire linen press; 4 pntd rope wicker arm chrs; pie safe; lift top desk w/CI base; deck top chest; 4 drw chest w/columns; dovetail blanket boxes; 1 drw stand; wainscoted/CI dry sink; counter-top desks; shoe factory racks; 2 St. Johnsbury chrs (no seats); set 5 Vict chrs; ogee mirror; Vict walnut mirror; bev gl pier mirror w/gilded frm; unusual sm corn sheller in old grn pnt; & more! Oak Furniture, Etc: 5-leg sq oak tbl w/6 leaves; set 5 Mission-style arm chrs; 8' library tbl w/faux leather top; stick & ball umbrella stand; stacking bookcases; tea tbl w/ball & claw feet; sm server; custom pntd 7'x18" farm tbl; CI pot belly stove; nearly new Electrolux vacuum; & more!

Accessories: tin military canteen w/eagle stencil; folk 4-tier sewing caddy; tintypes & dags in Union cases; stoneware pint measure; Gripstand yellowware bowl; Royal Bayreuth creamer & vase; variety transferware & softpaste; Limoge bone dishes; ~17pcs Old Ivory; other porcelain & china; 2 Pink Pigs in purse; carnival glass inc few Northwood; Fenton vases; Boyd gl slippers; few pcs silver overlay; 5 coin RH Bailey (Woodstock, VT) tsp; sterling souv spoons; 8drw oak spice box; trencher; butter stamps; sm tin pie safe; wall clothes dryer; polish iron; Seth Thomas oak schoolhouse clock; Ansonia porcelain mantle clock; B&H? 2-tier nickel parlor lamp; quantity chandelier prisms; Thompson & ODell mandolin; Stella mandolin; violin w/German lbl; Hummel #94 w/emb full bee; set Snow White & 7 Dwarves music boxes; dresser accessories ; 15+ mahjong(?) tile rests; vintage Xmas ornaments; ice saws; snow shoes; & more! Children's Items: folk rocking horse; shoefly; CI Kenton Brand Safe Deposit still bank; tin Mail Box bank; cereal set; Emenee Golden Piano Accordion; Lincoln Log sets; books inc Tuck's Christmas Morning & 1884 Our Baseball Club; & more! Textiles: 3-color homespun w/Joseph Smith Millerstown Leb Co 1840 woven in corner; 4x16' pc vintage Japaese brocade; ~10x4' paisley shawl; old buttons inc military, glass, etc; signature quilt; Hmong embroidery on stretcher; many clean, pressed linens inc pillow slips & shams; & more! Jewelry/Watches: Hampden Dueber 14k yg hunter case w/eng dog; Waltham Dueber 10k gf 17j; Elgin

DeLuxe 10k gf 19j; gf watch chain w/owl fob & locket; Masonic fob/locket on ribbon; cufflinks & studs; Victorian jewelry; sterling jewelry; costume jewelry inc some designer. Coins: Liberty \$1 inc 1884, 1888, 1902, 1921D; Peace \$1 inc 1922S, 1923D; 1934 \$5 silver certificates; 9 1957 & 3 1935 \$1 silver certificates; \$20 gold coin (commemorative?); Civil War-era tokens inc 1861 Union Forever w/Indian, 1863 copper w/capped Liberty; Chinese trade dollars; & more! Ephemera: Bradford & Enosburg Falls, VT broadsides; photo albums & calendars; 1920's investor prospectus for The Yorkgate, NYC; 1924 Womens Institute books; sm lot Woodstock, VT paper; 1920-30's Bradford paper; postcards & photo packs (mostly foreign); steamship menus & luggage decals; Russian poster; & more! Paintings & Prints: 1838 Mt Washington etching pub Geo Virtue; N Currier's 1845 Washingtons Reception by the Ladies...; book illust sgnd TS Hyman; O/C Self Portrait sgnd Rubington; abstract O/C sgnd BL Davis; pencil W/C shepherd sgnd Janis Villos(?); color etching sgnd Ruth Kerkovius '68 w/gallery lbl; etching "Rabbi" sgnd Lafon(?); 4 1960s unfr woodcuts sgnd (William)Morgan; etchings European scenes; Ben Shahn poster; portfolio 1940's art sgnd Kenneth Shopen; frames & much more!

PREVIEW: Friday October 16, 3:00 - 6:30 P.M. & from 8:30 A.M. DAY OF SALE

REFRESHMENTS by Wright's Catering
6% SALES TAX W/O DEALER # 10% BUYER'S PREMIUM
TERMS: CASH, MC, VISA, DISCOVER,
OR CHECK W/SUFFICIENT I.D.

AUCTIONEER: CHUCK EATON, VT LIC. #57-315
PHONE: 802-333-9717

E-MAIL: mail@EatonAuctionService.com
WEB: www.EatonAuctionService.com

DIRECTIONS: From Interstate 91 North & South use Exit 16 for Bradford, VT. From exit ramps, go 1 mile on Rt. 25 South straight through the traffic light at the junction with Rt. 5 and past Farmway to auction site on the left. Watch for auction signs -- parking and entrance are at rear of building.

Next Auctions: Our current schedule for 2010 winter sales at the Bradford Community Center is January 16, February 20, March 20 & April 17.