

F.O. BAILEY
ANTIQUARIANS

F.O. BAILEY ANTIQUARIANS
Serving Maine with Experience and Expertise Since 1819
Is pleased to announce

AN UNRESERVED MAINE ESTATE AUCTION

At
The Elk's Club
1945 Congress Street, Portland, ME 04102
SATURDAY, NOVEMBER 7, 2009
10:00 A.M.



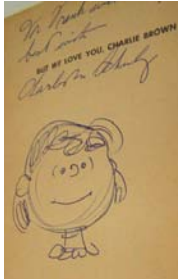
Queen Anne Lowboy and garden seats



5 dr chest



John Cavanaugh bronze side view



Schulz signature and sketch



Sylvia Plimack Mangold



Chippendale chairs

Inspection: Friday, November 6, 2009 from 2:00 p.m. to 6:00 p.m. and day of sale from 8:00 a.m. to 9:45 a.m.
Terms: Cash, Visa, Amex, MC, or check with approval. 15% buyers' premium. Maine sales tax is 5%; dealers must provide a copy of seller's resale certificate or remit tax.
Directions: From the north and south of Portland, take exit 46 off I95. At end of exit, turn right onto Jetport Road and then left onto Congress Street. The Elks Lodge is 1/2 mile on the left.
This auction features a 20th C painting by Sylvia Plimack Mangold, a marquetry decorated bombe bookcase, an antique Chippendale 4 and 5 drawer chest, other country furniture and accessories, sterling silver, jewelry, coins, and currency from a mid-coast Maine Estate. A special feature is a group of 5 signed vintage Charles M. Schulz paperback books w/original sketches. Just in-a-pair of mahogany Chippendale chairs, 6 grained country side chairs and more.
Visit our web site at www.fobailey.com
P.O. Box 66810, Falmouth, ME 04105 Tel: 207-781-8001 Fax: 888-261-8812
Joy Piscopo AR#482 Jack Piscopo AR# 192

Visit us on the web at
AntiquesandTheArts.com

RED SHOES AUCTIONS ON SITE AUCTION

of remaining estate items of the late Virginia L. Doris, Miss NH (1934) historian, activist, artist, poet, and well known character.

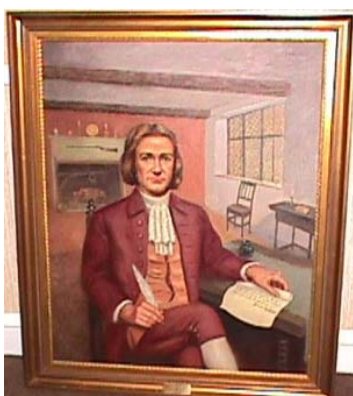
When: Saturday, October 31 2009

Time: Preview begins 10 a.m. auction starts NOON

Where: On site, 16 Canna St. Warwick, RI 02888



Silver King o/c Robert Evans Breck



Roger Williams o/c Robert Evans Breck



Scotty dog o/b signed Robert (presumed to be Breck)

Directions: From I-95 take exit 13 AKA/airport connector 1 mile to exit for US Rt. 1 Post Rd. North. Proceed North on Post Rd. .7 miles and turn RIGHT on to Airport Rd. and travel another 1.5 miles. Next, turn LEFT on to Warwick Ave. Continue .6 miles and turn RIGHT on to Namquid Dr. After .1 mile, Canna is the 2nd RIGHT.

Items include: Signed response letters from people of national political, historic, and RI political prominence. President Richard Nixon, March 13, 1973 V.P. Lyndon B. Johnson, November 4, 1961 1929 Nobel Prize author, Thomas Mann, Aug. 16, 1946 Another from Thomas Mann dated April 23, 1945 Oklahoma Gov. Frank Keating, July 17, 1997 Ambassador to Ireland, William H. Taft III, 1953 Gene Autry, November 28, 1947 Meredith Vieira, CBS news/60 Minutes letterhead Nils Thor Granlund, KTSL TV, Hollywood, CA 1951 S. Mills from the office of John Glenn, NASA 1962 Jose Rolz-Bennett, United Nations letterhead 1963 RI Gov. Christopher Del Sesto, 1959 RI Gov. John Chafee 1965 Providence Mayor Vincent Cianci Jr. 1981. 5 letters from John O. Pastore These letters have never been in dealer hands and many come with the envelope they were received in addressed directly to Virginia Doris complete with appropriately dated post marks. I presume the Nixon signature to be a stamp. Bidders MUST examine signatures in person before bidding. No blind bidding on signatures.

Paintings and artwork include the following: 5 Oil on canvas portraits by Robert Breck, including a commissioned portrait of Roger Williams which was on display in the RI State House, (1985) until reclaimed by Mrs. Doris. Portraits of Mr. and Mrs. Doris, a still life, and yes, a portrait of their prized horse, Silver King. A sixth painting of a Scotty dog, simply signed "Robert" is believed to be by the same artist. A Western scene with cowboys, done in pallet knife signed Wilson Palmer. 25 plus whimsical, folk art paintings by Vir-

ginia Doris, many include horses. Prints and decorative objects.

Furniture: There about 30 pieces of Philippine wicker and rattan furniture made for every room in the house, plus 25 more wicker vessels and decorative pieces. Almost all in perfect condition.

Clothing: Most of the clothing in the house was never worn, and many still have the tags on. Most are sizes small and medium. Some furs too. Vintage riding outfit and Lady Stetson riding hat.

Small book collection including 3 hard covers by Thomas Mann, 1940s, 4 vintage editions of Edgar Allan Poe poems, The autobiography of Benvenuto Cellini with illustrations by Salvador Dali, a few vintage hardcovers about witchcraft and voodoo, a 1963 edition of The Scottish Tartans with plaid cover and still in the display box. Other vintage hard covers, poetry, novels, etc.

I am still digging through the odds and ends, but some of the other things that I have found so far include: Old concrete bird bath with squirrels, 1940s fashion photos, 1969 through 1982 Hot Wheels and Matchbox cars. A large antique transferware vessel, Raymor Italy pottery dresser box, scatter rugs (no hand knotted or antique) cloisonné, MOP opera glasses, horse theme items, dinnerware, milk glass, Avon bottles, antique leather riding crop, 3 bird cages, holiday decorations, and some box lot items.

For more photos go to:

auctionzip.com and search auctioneer #12967
Sale under tent, rain or shine Catered lunch by Jan Cann
Terms: Cash or check. No credit cards or financing 10% buyer's premium added to your bid price 7% RI sales tax, unless you have a resale certificate
Auctioneer: Michael C. Glemboski DBA/Red Shoes Auctions
License #5531 Phone: 401-789-8787 email: redshoesent@cox.net



AUCTIONS L.L.C.
149 NORTH ROAD,
RTE 140, EAST WINDSOR, CT
TEL. (860) 623-2100 or (888) 457-7778

ESTATE AUCTION EVERY THURSDAY

Preview 2 PM ~ Estate Auction 7:00 PM

Furniture: quality mahogany, walnut, oak, maple, and pine furniture; bedroom, dining room, living room, and occasional furniture to include chests, dressers, tables, chairs, etc!
Smalls: artwork & prints, ephemera, glassware, china, lighting, mirrors, electronics, decorative items, plus much more...still sorting estates so expect unadvertised surprises!

website at www.goldengavel.com

Email with questions: goldengavel@att.net

Terms: Cash, Checks, Master card, Visa, Discover, Debit cards.

Subject to errors and omissions

18% buyer's premium,

3% discount for cash or approved check, all sales final.

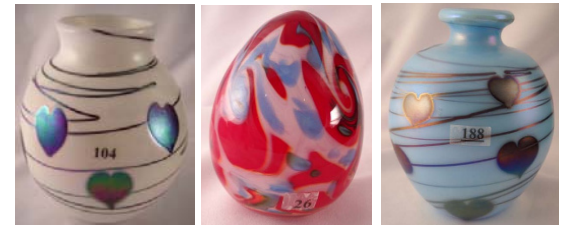
FENTON ART GLASS MUSEUM AUCTION

SUNDAY NOV. 8, 2009
12:00 NOON

(PREVIEW 11:00 A.M.)

www.randyclarkauctions.com

Auction to be held at the
Fenton Art Glass Factory
located at the corner of
Caroline & Elizabeth St.,
WILLIAMSTOWN, W.V.



An opportunity to buy some of the rarest pieces of Fenton Art Glass to go up for auction at one time. Straight out of the Museum storerooms (Franks closet) - 225 pieces, many sample pieces by glass artisans Robert Barber, Dave Fetty, Frank Workman, Delmer Stowasser, Kelsey Murphy, Robert Bomkamp, also many artist proofs, Louise Piper and others, sample colors, photo samples, designer samples, whimsies, lamps, etc Pieces span the 100 year operation of the Fenton factory (still in operation), with pieces made from 1908 to 2008 and other pieces made in every decade in between.

This is the 6th auction we've held for the Fenton's - and the best yet - Don't miss out - to see photos and catalog log on at www.randyclarkauctions.com or www.auctionzip.com - ID#2109

I'd like to take this opportunity to thank the Fenton family, employees, Dr. Jim Measell and all for allowing myself and my amazing crew to hold yet another exciting auction for them,

Randy Clark Auctioneer

Randy Clark & Associates Auctioneers
740.783.8000 or 740.706.0417

Absentee/ active phone bids available w/surcharge (as-is, no return policy)

TERMS: cash, check
Live internet bidding through
www.liveauctioneers.com
Food Available

