

# MICHAAN'S AUCTIONS

Auctioneers & Appraisers

## Estate Auction

featuring a selection of 19th century works

Auction: Sunday, November 1, Noon  
 Previews: Friday, October 30, 10am - 5pm;  
 Saturday, October 31, 10am - 5pm;  
 Sunday, November 1, 9am until end of sale

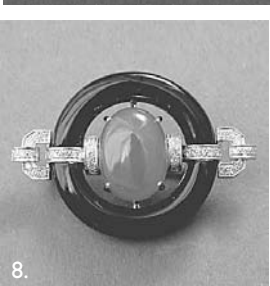
To learn more about this auction, view our online catalog and how to participate via [Artifact.com](http://Artifact.com), we invite you to visit our website at [www.michaans.com](http://www.michaans.com) or call 1-800-380-9822 or 510-740-0220.

Follow us on Facebook and Twitter.

Our next Annex Auction will be held on Tuesday and Wednesday, November 3 & 4, 10am. Over 1800 lots, most without reserve.

We are currently seeking property for our auctions. Please inquire about our risk free consignment policy.

2751 Todd Street, Alameda, California, 94501



1. N. Currier, American "American Winter Scenes, Evening"
2. Spanish Colonial Painted Wood Plaque of Christ with Thorned Headress
3. French Verlys Opalescent Glass Three Piece Garniture Set with Sparrows Perched on Grape Vines
4. United States 1878 S Trade Dollar EF-4S
5. Rare Chinese Carved Lapis Lazuli Figure of Guan Yin
6. Egyptian Bronze Figure of Ushabta
7. European School, "Portrait of and Elderly Woman in a Lace Veil"
8. Jadeite, Diamond, Black Onyx, 18K White Gold Brooch
9. Towle Sterling Partial Dinner Service in the Chippendale Pattern
10. Mahogany Empire Fall Front Desk
11. Austrian Bentwood Settee with Cane Seat
12. Italian Walnut Five Drawer White Marble Top Commode with Columnar Stiles and Art Nouveau Style Gilt Brass Pulls, 19th Century
13. Marble Top Fall Front Desk

Bond #70044066

Michaan's Auctions, formerly Auctions By The Bay, Inc.



## "Peddler's Auction" of Antiques & Collectibles

Every Tuesday 6:30 pm

Gallery at 127 Main St. Seymour, CT

Call 203-888-3400

to reserve tables.

Estate items purchased or Consigned

[www.keystoneauctions.com](http://www.keystoneauctions.com)

## COUNTRY AUCTION

SATURDAY

OCTOBER 31st 9:30 A.M.

TOWNSHEND AUCTION GALLERY

RTE. 30 TOWNSHEND VT.

(15 MILES NORTH OF BRATTLEBORO)

All treats and no tricks at this hauntingly exciting Halloween auction. Featuring a fine Brattleboro Vt. home who's owners have moved from the area w/additions from local homes. There will be lots of great antique, country and superior quality modern furniture and accessories. A huge collection of glass; china; collectables; artwork; rugs and carpets; much more. Be sure to check our website often for photos and other details.

Exhibition is from

2-5pm on Friday and at 8:30am on Saturday

A great late 18th century N.H. blanket box w/boot jack ends, snipe hinge and a bottom drawer--An early 19th century pegged pine lift top station desk w/two drawers, taper leg (Shaker??)--A nice scrubbed pine two drawer foyer desk w/trestle base--A sweet little early 1800's hanging corner cupboard--A superb mahogany and walnut double door armoire w/raised panels--An absolutely beautiful four poster bed w/rope twist posts and flame finials (queen size, like new)--Country pine cradle--Like new quality oak framed day bed w/trundle and a "new" double sofa from the J. Raymond collection--A nice pair of vintage wing chairs w/faux leather--A country rush seat foyer bench w/arms--A great country open top corner curio w/strap hinged bottom door--"Templeton Furniture" maple drop leaf dining table w/two extra leaves and a nice set of four maple captains chairs--A nice fancy country store cast iron pot belly stove "Magic Ande's #11"--A nice early country tilt top hutch table in orig. old blue paint, scrubbed top etc., and classic country pine kitchen work table w/turned legs, pegged--A wainscot kitchen corner cabinet w/glass doors in old apple green paint and an early pantry cupboard--Original green Hoosier companion piece--A beautiful (like new) 1930's walnut bedroom set including tall chest, dresser and vanity--A good Temple Stewart maple three drawer chest w/mirror--Lane Danish modern style walnut cedar dowery chest w/mechanical interior tray--Superb Windsor continuous arm rocker--Fancy high back Vict. piano stool w/ball & claw feet--Fancy Victorian oak lamp stand--A very nice Pembroke drop leaf lamp table w/drawer "Statton Furniture"--A very pretty set of six Hitchcock style rush seat chairs, nicely stenciled (H.H. Woodlock)--Pretty French marble top credenza--Fancy paint decorated pine cottage bed and a pine cottage one drawer stand--Golden oak commode w/back--Birds eye slant lid ladies desk--Oak arts and crafts rocker and much more...

Lots of interesting artwork including 1898 etching depicting a mother and child spinning yarn--A classic oil-on-board of a winter scene signed "Wilden -hain"--Large oil painting of a rocky ocean shoreline signed "Mathews" in a beautiful gold gilt oak leaf frame--"Paul Dettelosen" print of country farm in fancy Victorian frame--A wonderful black/white litho titled "Cumberland Gap" newly matted in gold gilt frame, signed "H. Fern", also a black and white litho "City of Providence" by Warren--A pretty pair of "Florentia Italy by Robert Laessig--A couple of Mary Wood oil paintings "Bait Shack" and "Still Life"--A nice pair of early portrait photos in matching gilt frames--Hand colored Civil War portrait of a young lad and much more...

Over one hundred piece set of Meito China "Paris" pattern complete w/serving pieces--Nice white porcelain basket weave pattern fruit bowl--Lots of fancy and quality silver plate serving pieces including a Poole Silver Co. ice bucket w/lion head handles--Crescent footed water pitcher--Rogers tea pot--Sheffield covered serving items w/pineapple finials--Pretty Victorian gravy boat--Camark Pottery flower holder and other asst. pottery items--Lefton china vase w/applied roses--A great pair of glazed green matte planters--"Brurche" California pottery casserole on lazy Susan (extra nice)--A pair of gold gilded decorative porcelain quail "M.O.C."--Set of four 1950's Victorian "Godies" ladies figurines--A large set of fine crystal stemware--Ruby depression ice tea and juice glasses--extra tall ocean blue compote--Fancy crystal cake plate w/heavy silver overlay--Hobnail divided dish, mustard jar, etc.--Pair of green glass dresser jars--Cranberry cut to clear candy dish--Pair of white porcelain "Dansk" cake plates--Black amethyst bowl--Nice ironstone pitcher and wash bowl set--Three gall brown stone ware jug and other stoneware jugs and crocks Several cut glass items inc. cruet; large fancy fruit bowl; nappy; fancy compote and more--Three piece Victorian cruet set--Set of crystal liquor decanters--Bristol hand painted vase--Nice porcelain soup tureen w/under plate and more

A nice little collection of old bottles including a Guilford Mineral Springs (green glass, Guilford Vt.)--Geo. E. Greene Pharmacists Brattleboro Vt.--Dark green medicine "G.W. Merchant Lockport NY"--A nice Troy NY "Mineral Water" bottle, light green color--Rare "Rev. N.H. Downs Vegetable Balsamic Elixer" octagon bottle--Hachman & Hulle 423 West St. blob top blown bottle "Dr. A.C. Daniels 'Wonder-Worker Lotion'" paper label and many others--Other items of interest include a neat table top fifteen drawer spice cabinet w/cut-out base--Fancy Victorian bird cage house--A beautiful over sized Victorian doll house--a nice single panel divider w/floral silk fabric--Vintage wicker picnic set in suitcase style--Early tole spice canister (cinnamon)--Early tin coal hod--Early wrought iron four candle hanging lamp--Nice colonial hand wrought copper tea kettle--Bell brass candle sticks--Farberware decorated hammered pastry tray--Owl and Horse book ends--1950's dresser set--Nice hooked rug, Oriental area rugs/carpets and more.....

**Auctioneers note:** This is a mere suggestion of yet another over stocked auction. We hope that you will join us for the day

[www.townshendauctions.com](http://www.townshendauctions.com)

TOWNSHEND AUCTION GALLERY

Where honesty & integrity count

802-365-4388

AUCTIONEERS: H.K. "KIT" MARTIN • ART MONETTE  
 VISA/MASTERCARD • 12% BUYERS PREM. (2% DISC. CASH/CHECK)