



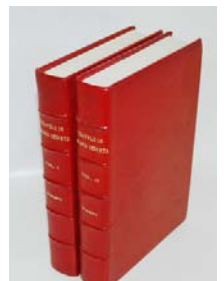
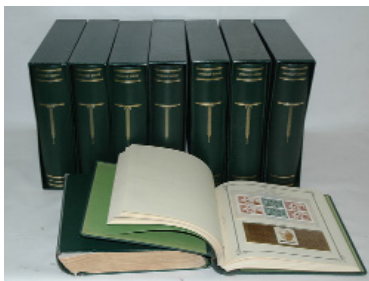
Books Paper & Ephemera Auction

Saturday September 11th 5:30 PM

Early bird on the loading dock at 5:30, inside at 6:30

Preview: Friday September 10th, 2009 Noon - 5:00 PM, Day of sale Noon to 6:30

Un-cataloged, hundreds and hundreds of lots, tens of thousands of items, always a surprise and always a treasure, plenty of estate fresh lots, don't miss this auction!



Several estate-fresh libraries and collections. This auction includes thousands and thousands of stamps, postcards, photos, sheet music, photos, mixed ephemera and books to be sold in nice lots. Including a number of large and nice US & foreign stamp collections that include many 19th century stamps, many pre-WWII lots, plate blocks, first day covers, cancellations and more. Excellent postcard lots include Police postcards with Real Photos and more, lots of black Americana, Telephone Postcards, Christmas Postcards, Super album of Halloween postcards, Leather-bound books sets, Oxford Mark Twain, thousands of pieces of sheet music in sleeves to be sold in lots, World's fair items, Cigar Labels, a 20 volume Oxford English Dictionary, Sherlock Holmes collection, Meriden CT Paper, postcards and Ephemera, New Haven, Hartford, CT and US town Views, Savin Rock Postcards, Masonic Items, books, letters, paper-etc. Anti-Masonic Party Letter from 1832, Pulp Novels, Paperbacks, Good Girl Art, 1950's fiction, Great Magazine lots, from late 19th C. Through 1960's, many in excellent condition, Vintage Comic Books, Beatrix Potter Books, Nice Childrens books, Opera Libretto's, Vintage Signs and Advertising, Medical and civil war books, History and Literature, Tons of Fiction

books, Rockwell Kent Illustrated Canterbury Tales, Currier and Ives Trade Cards, Victorian Scrap books, Trade card lots, Victorian Photo Albums, CDV's, Cabinet Cards, Albumens, WWII Maps etc, and more.

"DISCOVER THE WAY AUCTIONS SHOULD BE"

Computerized, 17% Buyers premium, Visa, MC, Discover, 2% Discount for Cash, debit or check, Out of State checks OK with Telecheck, Snack Bar open with Mommas treats, Easy Highway access from I91, I691, Rte 15 & Rte 66

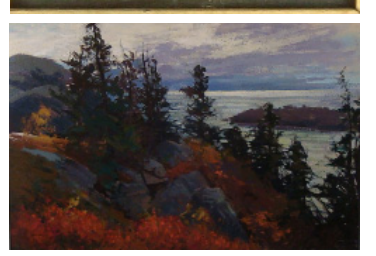
NEST EGG AUCTIONS Ryan Brechlin, Auctioneer
30 Research Parkway Meriden, CT 06450

203-630-1400 • 800-448-0692 • www.nesteggauctions.com

ANTIQUUE AUCTION

TUESDAY SEPTEMBER 14TH @ 5:30 p.m. preview 3:00 p.m.

Andrew Jarvis Center * 40 Andrew Jarvis Drive * Portsmouth, NH



FURNITURE 19th c corner cupboard w/paneled glass door, pr of inlaid German marriage chairs, triple pedestal mahogany Regency style dining table, 3/3 French style chest, ornately carved b&c wing chair w/ flame stitch upholstery, pr of Victorian round oak center tables w/reed leg, 59" oak roll top desk w/fitted interior & raised panels, Victorian oak day bed w/claw foot, Sleepy hollow chair w/carvings, Art Nouveau oak mirrored chest, 4 oak commodes, oak tall chest w/matching bed, oak side by side w/mirror, oak gents chest w/mirror, pr. of Haywood Wakefield arm chairs & desk, lamp tables, (8) country French chairs, 2 pr of French style twin beds w/inlays, pine farmers table, pine bench, (8) Sheraton dining chairs, French style love seat, Victorian marble top chest, marble top oval lamp table, carved Victorian walnut high back bed, (8) repro Chippendale mahogany dining chairs, Plantation desk, dl maple table, cupboard, china cabinets, 2/3 Empire chest, Victorian 2/3 chest, Mahogany Governor Winthrop desk, upholstered barrel back chair, carpet rocker, (6) plank seat chairs, Custom made E. Wheeler inc., pr tiger maple 1 drawer stands, Shaker style drop leaf table, Queen canopy bed, Richard Buiell king size bed, Thomas Hill QA style tiger maple sofa table

ACCESSORIES fantastic Venetian silvered wall mirror 58" h., good pewter lot, redware pitcher, framed religious needlepoint, hp porcelain plaques, bronze frames and candlesticks, camphor wood chest, cloisonné, several needlepoint foot stools, Sheffield bookends, chopping bowls, trencher, ship doorstop, large copper candy bowl, Tole tray, compass, oriental scroll, decorative lamps, copper fire extinguisher lamps, architectural post, oak tool chest, ogee clock E. N. Welch, Victorian mantle clocks, Linens, linen bedding, crewel work, beaded bag, paisley shawl, silk Kimono, costume jewelry, sterling, cameos, Hamilton pocket watch, Christmas decorations

Sterling Gorham 5 piece tea set, 10" Kirk bowl, Towle "Chased Diana" flatware 247 piece set, International "torchlight" 58 piece set, Gorham "Buttercup" 61 piece set, Francis 1st butter, spreaders, orange blossom spoons, bright cut serving pieces, fish servers, arts & crafts bowl, decorative box, sherbets & demitasse w/Lenox liners, overlay cordials, salt & pepper sets, continental, candlesticks, hollowware, coin cups, sp Scottish fish set in oak box **GLASS & CHINA** good stemware inc. Moser wines, 76 piece set Webb stemware, sets shrimp cocktail glasses, Baccarat, Stueben

eagle, cut glass, English Chintz, Royal Crawford calico dinner set, blue depression glass, Spone-ware, stoneware, silver luster, blue & white transfer ware, blue willow, copper luster, Italian pottery, Copeland Spode "Blue Tower" 78 piece set, French urn set, Wedgwood

ARTWORK w/c seascape signed AT Bricher, o/b barnyard signed Linnhaus, o/b coastal scene signed Bob McNally, w/c Isles of Shoals WM Bicknell, o/b still-life Wanda Roose, o/c NH landscape 1876, o/c Victorian garden scene signed H. Clater, Italian painting on enamel, o/c Pemaquid Light Parker Gamage, w/c dock scene John Good, 19th c portrait, o/b still life W. Kenneth, o/c contemporary by Bert Groedel, w/c Portsmouth tug boats, Prints, "HMS Duke of Wellington 131 guns" Ackerman & co, Hibbel, Sawyers, Nuttings, framed maps & charts, north coast print, Boars Head prints **ORIENTAL RUGS** blue Sarouk w/wear, Ivory Kerman 9 x12, Keshan 6.7 x 9.9, Portuguese needlepoint 6.4 x 8.4, Bidjar 4.10 x 7, Hamadan 5 x 10.7, runners, scatters, Bokaras, folksy hooked rugs

TERMS: buyer's premium, cash or check on approval, all items subject to error sold "as is" "where is", all sales are subject to terms and conditions of the sale, catered, no absentee bids or phone bids, phone day of sale 603-498-3131, Maureen Boyd, NH lic. #2821, John Boyd NH lic. #4010

DIRECTIONS: 1-95, N/S exit 5 to Portsmouth traffic circle, bear right onto the rte 1 by-pass south take a left at the third set of lights onto Greenleaf Ave. at the top of the hill take a sharp right, then the first left onto Andrew Jarvis Drive the hall is behind St Nicholas Church (near Portsmouth High School)

BOYD AUCTIONS
Antiques • Appraisals
(207) 439-6641
WWW.BOYDAUCTIONS.COM
www.boydauctions.com look us up on auctionzip #2676

BOYD AUCTIONS
PO Box 294 Eliot, ME 03903
(207)439-6641