

CRN

A SUMMER MÉLANGE

Sunday, June 26th at 11 a.m. (EST)

to be held at

**The CRN Gallery
57 Bay State Road
Cambridge, Massachusetts**

PREVIEWS AT THE CRN GALLERY:

Friday, June 24th from 11 a.m. to 6 p.m.

Saturday, June 25th from 11 a.m. to 3 p.m.

Also by appointment.

Very limited preview morning of sale.



LOT 225. SALEM CHIPPENDALE MAHOGANY OX-BOW SECRETARY/BOOKCASE, 93.5”h; 41”w



LOT 255. PHILADELPHIA CHIPPENDALE MAHOGANY TEA TABLE, C. 1770, 35”DIAM.



LOT 250. RARE SALEM FEDERAL MAHOGANY ARCHITECT’S ADJUSTABLE DSK 29”h (CLOSED); 30.5”w



LOT 232A. 18TH C. NEW ENGLAND TAVERN TABLE, OLD RED PAINT, SCRUBBED TOP 25”h; 31”w



LOT 226. BOSTON/SALEM SHERATON MAHOGANY SIDEBOARD 42.5”h; 74”w; 22”d



LOT 249. PORTSMOUTH, NH FEDERAL WORK TABLE 29”h; 16”sq



LOT 232. C. 1780, BOSTON CHIPPENDALE BRASS DIAMOND AND FLAME ANDIRONS 24”

AMERICAN ANTIQUE FURNITURE AND RELATED ACCESSORIES



LOT 186. TIFFANY STERLING CHILD’S PORRINGER



LOT 303. 19TH C. FRIEDRICH TEXAS STEER HORN CHAIR



CHINA TRADE

LOT 228. 18/19TH C. REVERSE PAINTING ON GLASS OPIUM SMOKER, ORIGINAL FRAME, 19.5 BY 14 IN.



LOT 244. CHINESE EXPORT ARMORIAL SOUP TUREEN W/ SEPIA DECORATION, ONE OF SEVERAL MATCHING LOTS



LOT 240. EXCEPTIONAL 18TH C. CHINESE EXPORT COVERED PITCHER, 15”h



LOT 263. 18TH C. NEW ENGLAND BOLD TIGER MAPLE TAVERN TABLE 26”h; TOP 24” BY 20”

**GO TO OUR WEBSITE FOR ON-LINE CATALOGUE:
www.crnauctions.com**



A COLLECTION OF TEA CADDIES



LOT 261. NEW ENGLAND CHIPPENDALE BOLD TIGER MAPLE DESK, 39”w

CRN AUCTIONS, INC.

57 Bay State Road, Cambridge, MA 02138

PHONE: 617-661-9582

EMAIL: info@crnauctions.com

FAX: 617-661-1434

CRN

**ENGLISH, FRENCH, ITALIAN AND OTHER CONTINENTAL
FURNITURE AND DECORATIVE ACCESSORIES**



LOT 105. PAIR OF 19TH C. FRENCH COBALT PORCELAIN AND ORMOLU URNS, 18.5"



LOT 48. (PAIR) ITALIAN, 18/19TH C. SCHOOL OF FRANCESCO GUARDI o/c, EACH 50.5 BY 29 IN.
LOT 89. 17/18TH C. SPANISH CARVED WALNUT REFRACTORY TABLE 67"LONG; 31"D



LOT 109. PAIR OF 19TH C. FRENCH MARBLE AND FIREGILT BRONZE URNS 26"



ONE OF A PAIR SHOWN

LOT 93. PAIR OF ENGLISH REGENCY SATINWOOD STANDS, 28"H; 16"DIA. (RIGHT) LOT 130. PAIR OF ITALIAN ROCOCO CARVED GILTWOOD PEDESTALS, 52"



LOT 91. 19TH C. JOHNSTONE TERRESTRIAL FLOOR GLOBE, IRON BASE, 18"DIA.; 44"H



LOT 87. 18TH C. SPANISH COLONIAL ORNATELY CARVED CHEST A VARIATION OF THE AUSTRIAN HAPS-BURG CREST TO TOP 30"H; 50.5"W; 27"D



LOT 164. 19TH C. FRENCH MARBLE AND ORMOLU CANDELABRA, 26"



LOT 161. PAIR OF 19TH C. LOUIS XVI-STYLE NEEDLEPOINT ARMCHAIRS



PAVEL OVCHININNIKOV (1830-1888)

LOT 141. RUSSIAN SILVER PRESENTATION KOVSH, 16"W



LOT 96. JOE DIMAGGIO STERLING SILVER PLAQUE PRESENTED BY THE BOSTON RED SOX AT YANKEE STADIUM ON JOE DIMAGGIO DAY, OCTOBER 1, 1949. ENGRAVED WITH SIGNATURES OF THE 1949 RED SOX ROSTER.



LOT 231. FOLKART WHALEBONE TOBACCO BOX, 4"

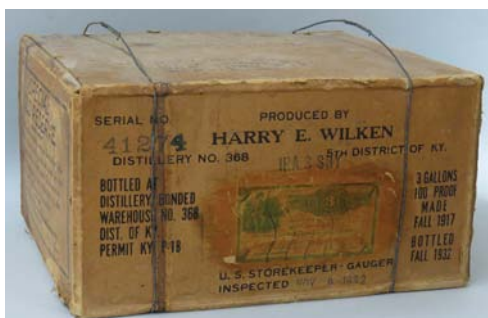


LOT 181. PAIR OF GEORGE III PAKTONG CANDLESTICKS, 11.5"



(LEFT) LOT 308. RARE 1921 JEANNE LANVIN STUDIO DISPLAY MANNEQUIN, 21"

(RIGHT) LOT 309. WAX HEAD JOINTED MANNEQUIN ATTRIB. PIERRE IMANS, PARIS, C. 1910 WAX BUST AND TWO HEADS ALSO BEING SOLD



LOT 219. PROHIBITION KENTUCKY BOURBON-MADE IN 1917 BOTTLED IN 1932 24 PINTS, CARDBOARD BOX NEVER OPENED



LOT 49. ITALIAN MARBLE BUST, 26" SGN. C. LAPINI/FIRENZE 1892



LOT 126. 19TH C. LIFE-SIZED ZINC HORSE HEAD, FLEISCHMANN & CO., NEW YORK, 32"

CRN

AMERICAN AND EUROPEAN WORKS OF ART



LOT 73. BERENICE ABBOTT (AM., 1898-1991)
SIGNED GELATIN SILVER PRINT
THEOLINE, PIER 11, MANHATTAN
19 BY 15 IN.
ONE OF THREE FROM THE ESTATE OF BERNARD COHEN, HARVARD UNIVERSITY PROFESSOR AND FRIEND OF THE ARTIST



LOT 1. ALBERT E. BACKUS (AM., 1906-1990)
FLORIDA ROYAL POINCIANA, o/c, 25 BY 30 IN.



LOT 63. THOMAS HART BENTON (AM., 1889-1975)
INK AND SEPIA WASH ON PAPER, 10 BY 14.75 IN.



LOT 6. SOL WILSON (AM., 1896-1974)
BLESSING OF THE PROVINCETOWN FLEET
o/c, 36 BY 24 IN.



LOT 80. HENRY PIERCE BONE (ENGLISH, 1779-1855)
SIR ISAAC NEWTON
ENAMEL ON COPPER, 5 BY 4 IN.
ALSO FROM THE ESTATE COLLECTION OF HARVARD UNIVERSITY PROFESSOR EMERITUS BERNARD COHEN, PROMINENT NEWTON SCHOLAR AND AUTHOR.



LOT 30. CHARLES W. HAWTHORNE (AM., 1872-1930) o/c, 41 BY 33 IN.



LOT 34. DAVID D. BURLUIK (AM./UKRAINIAN, 1882-1967)
WATERCOLOR, 10 BY 14 IN.



LOT 29. ARTHUR F. TAIT (AM., 1819-1905)
SGN. AND DATED 1895, o/p, 10 BY 14 IN.



LOT 77. HENRI MATISSE (FR., 1869-1954)
LITHOGRAPH, 9 BY 12 IN. (ONE OF TWO)

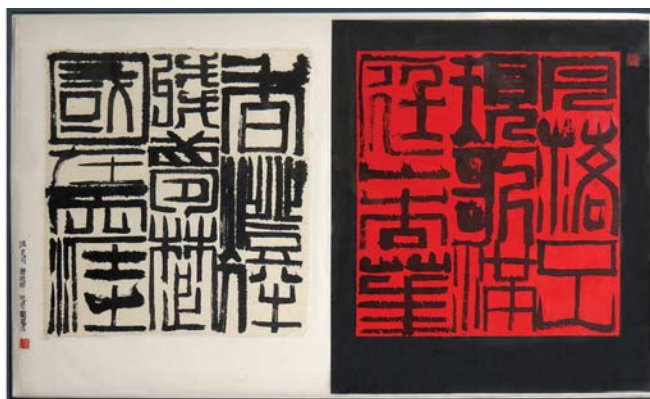


LOT 31. PETER KLUYVER (DUTCH, 1816-1900)
o/p, 10 BY 15.5 IN.



LOTS 38 AND 56
LOT 38. LLOYD HARTING (AM., 1901-1974)
WATERCOLOR, 15 BY 22 IN.
LOT 56. IGNATIUS TASCHER (GERMAN, 1871-1913) *PARSIVAL*
CAST BRONZE, 15 IN.

GO TO OUR WEBSITE FOR ON-LINE CATALOGUE:
www.crnauctions.com



LOT 62. LIU TIAN WEI (CHINESE, B. 1954)
INK CALLIGRAPHY ON RICE PAPER, 28 BY 46.5 IN.



LOT 12. PHILIP LITTLE (AM., 1857-1942)
o/c, 29 BY 36 IN.

ASIAN ITEMS



LOT 338. LARGE CHINESE CARVED AND POLYCHROMED HORSE, 39" LONG



LOT 326. SINO-TIBETAN GILT BRONZE BUDDHA, 7"



LOT 280. 19TH C. JAPANESE CLOISONNE CHARGER, 24" DIAM.



LOT 333. DRAGON ROBE, ONE OF SEVERAL CHINESE NEEDLEWORKS

CRN AUCTIONS, INC.

Carl R. Nordblom, Auctioneer
MA. LICENSE #425

57 Bay State Road, Cambridge, MA 02138
Register for online bidding at: www.LiveAuctioneers.com

Karin J. Phillips, Coordinator
ALL SALES FINAL

PHONE: 617-661-9582

EMAIL: info@crnauctions.com

FAX: 617-661-1434