

SPECIAL  
SHOW  
SECTION

THE 60TH ANNUAL  
New Hampshire Antiques Show



MELISSA ALDEN • KATE A. ALEX & CO. • AMERICAN GARAGE • AT HOME ANTIQUES • BARBARA ARDIZONE ANTIQUES • AXTELL ANTIQUES • SCOTT BASSOFF AND SANDY JACOBS  
JEFF & HOLLY NOORDSY ART AND ANTIQUES • NORWOODS' SPIRIT OF AMERICA • OLD AS ADAM -- ADAM IRISH • OLDE HOPE ANTIQUES, INC. • HERCULES PAPPACHRISTOS

THE 60TH ANNUAL  
New Hampshire  
Antiques Show



Radisson Hotel  
Manchester, NH  
August 10-12, 2017

THURSDAY & FRIDAY: 10AM - 7PM  
SATURDAY: 10AM - 4PM

JEWETT-BERDAN ANTIQUES • BILL KELLY • KELLY KINZLE ANTIQUES • NATHAN LIVERANT AND SON, LLC • THOMAS R. LONGACRE ANTIQUES • IAN MCKELVEY ANTIQUES • MG ART & ANTIQUES • MISSOURI PLAIN FOLK • NEVERMORE ANTIQUES • NEWSOM & BERDAN ANTIQUES  
JEF & TERRI STEINGREBB • STEPHEN-DOUGLAS ANTIQUES • STEVEN F. STILL ANTIQUES • PAUL D. SULLIVAN • THOMAS M. THOMPSON • JONATHAN TRACE • ED WEISSMAN ANTIQUES • MICHAEL WHITTEMORE ANTIQUES & FOLK ART • WITHERINGTON & CO. • DOUGLAS R. WYANT • GARY E. YEATON ANTIQUES

MARTHA ROYNTON ANTIQUES • PAM ROYNTON • BROCK & CO. • HOLLIS BRODRICK • JOHN CHIASI ANTIQUES • CHERRY GALLERY • PAUL & LINDA DECOSTE • DENNIS & DAD ANTIQUES • DEWOLFE AND WOOD • CHRISTOPHER & BERNADETTE EVANS ANTIQUES • BRIAN J. FERGUSON ANTIQUES  
PEWTER & WOOD ANTIQUES • GAIL & DON PLATT ANTIQUES • KEN & ROBIN PIKE • SHARON PLATT AMERICAN ANTIQUES • FRANK & BARBARA POLLACK AMERICAN ANTIQUES & ART • PRATT'S ANTIQUES • RESSER-THORNER ANTIQUES • JOHN H. ROGERS ANTIQUES • STELLA RUBIN

A.E. RUNGE JR. -- ORIENTAL RUGS • JASON SAMUEL FINE ART & ANTIQUES • PETER SAWYER ANTIQUES • STEPHEN SCORE, INC. • MICHAEL & LUCINDA SEWARD • MARY & JOSHUA STEENBURGH  
M. FINKEL & DAUGHTER • NANCY FISHELSON • ROBERT T. FOLEY ANTIQUES • TUCKER FREY • PAT & RICH GARTHOEFFNER • FRED GIAMPIETRO • JOHN D. GOULD • BOB JESSEN & JIM HOHNWALD



# THE 60TH ANNUAL New Hampshire Antiques Show

SPECIAL  
SHOW  
SECTION

## Welcome

It's hard to believe that the New Hampshire Dealers' Show is 60 years old. What's even harder to believe is that I have been exhibiting at more than half of them. That is until I glance in the looking glass and notice that my boyish good looks have started to fade. Our board of directors and members have been doing extra duty to make this, our Diamond Jubilee, the best show yet. As always, our exhibitors have been squirreling away the best of what they have been finding to bring out at the show. Each year I am amazed at the quality of fresh merchandise our dealers come up with to offer for sale.

While this promises to be an exciting show, it also is a little bittersweet. When looking back over the 40 or so years I have been attending, I think of dealers who are no longer with us that were an inspiration to those of us who followed. I also have witnessed how the business and the public's tastes have changed over the years and how most dealers are adapting to those changes. Howard Odell, who exhibited at the first show, is still with us at a young 96. We are honored to have him cut the ribbon opening our show.

On a sad note, Pam Boynton, one of our long-time exhibitors is no longer with us. She was a mentor and



friend to many of us. Her quick wit will always be remembered. We would like to dedicate this year's show to her memory.

While you are in New Hampshire, take time to travel around the state and visit some of our many shops. Some plan special events around Antiques Week and will be anxiously awaiting your visit. Not all the great stuff is at the show. You may luck out and discover a rare treasure as you travel the roads of our state.

Welcome to New Hampshire, our shops and our how. I'm sure you won't be disappointed.

**Thomas M. Thompson, President**  
New Hampshire Antiques Dealers Association



## DEALERS DIRECTORY



A.E. Runge Jr, Oriental Rugs .....	65	Jason Samuel Antiques .....	20	Nevermore Antiques.....	46
American Garage .....	60	Jeff & Holly Noordsy.....	25	Newsom & Berdan Antiques .....	45
Axtell Antiques .....	17	Jef & Terri Steingrebe .....	18	Old As Adam.....	48
Barbara Ardizone Antiques .....	44	Jewett-Berdan Antiques .....	40-41	Olde Hope Antiques, Inc. ....	9
Bill Kelly Antiques .....	26	John Chaski Antiques .....	57	Pam & Martha Boynton .....	43
Bob Jessen / Jim Hohnwald .....	61	John D. Gould .....	56	Paul J. DeCoste .....	75
Brian J. Ferguson.....	69	John H. Rogers Antiques.....	14	Paul D. Sullivan .....	50
Brock & Co.....	55	Jonathan Trace .....	30	Peter Sawyer .....	3
Cherry Gallery.....	79	Judith & James Milne.....	36	Pewter & Wood Antiques .....	52
Christopher & Bernadette Evans .....	49	Kate A. Alex & Co.....	8	Resser-Thorner Antiques .....	19
Dennis & Dad Antiques .....	31	Kelly Kinzle.....	37	Robert T. Foley Antiques .....	54
DeWolfe and Wood Rare Books .....	47	Ken & Robin Pike .....	64	Scott Bassoff /Sandy Jacobs .....	15
Douglas Wyant Antiques.....	74	M. Finkel & Daughter .....	29	Sharon Platt .....	53
Ed Weissman.....	28	Mary & Joshua Steenburgh.....	4	Stella Rubin.....	70
Frank & Barbara Pollack .....	13	Melissa Alden .....	66	Stephen-Douglas Antiques .....	7
Fred Giampietro .....	72	MG Art & Antiques .....	68	Stephen Score, Inc. ....	42
Gail & Don Piatt Antiques .....	32	Michael & Lucinda Seward .....	22	Steven F. Still Antiques .....	11
Garthoeffner Gallery .....	16 & 23	Michael Whittemore .....	27	The Norwoods' Spirit of America.....	10
Gary F. Yeaton Antiques .....	51	Missouri Plain Folk.....	21	Thomas R. Longacre.....	6
Hercules Pappachristos .....	78	Nancy & Gene Pratt.....	67	Thomas M. Thompson.....	24
Hollis Brodrick.....	33	Nancy Fishelson .....	59	Tucker Frey Antiques.....	71
Ian McKelvey Antiques .....	58	Nathan Liverant and Son, LLC .....	12	Withington & Co.....	73



SPECIAL  
SHOW  
SECTION

THE 60TH ANNUAL  
New Hampshire Antiques Show

# PETER SAWYER ANTIQUES

17 COURT STREET,  
EXETER, NEW HAMPSHIRE 03833  
603 772 5279

Exceptional Time Piece, circa 1825  
Edmund Currier (1793-1853)  
Salem, Massachusetts

Mahogany with skillfully carved eagle, side brackets, and pendant.  
Eight day movement in excellent running condition,  
signed on the dial "E. Currier, Salem".  
A very rare object in a fine state of preservation.



*We specialize in fine New England antiques  
from the late 18<sup>th</sup> and early 19<sup>th</sup> century.*

*Generally, our shop is open Monday - Friday and visitors are welcome to stop by anytime.  
To insure that we are open, a call ahead is encouraged. We are always eager to buy fine New England objects.*

*Peter Sawyer/Scott Bassett  
Petersawyer@comcast.net • PeterSawyerAntiques.com*



# THE 60TH ANNUAL New Hampshire Antiques Show

SPECIAL  
SHOW  
SECTION



**A.E. RUNGE JR, ORIENTAL RUGS**, Yarmouth, Maine — Persian Heriz Village carpet, 10 feet 2 inches by 6 feet 10 inches. It dates circa 1920s and is in very fine condition — \$6,900.



**FRANK & BARBARA POLLACK**, American Antiques & Art, Highland Park, Ill., and Sunapee, N.H. — An unusual pair of paint-decorated and stenciled stools, American, probably Connecticut, cherry and dating circa 1825–40. They are most unusual in size and form with stylish rolled edges to the tops and splay to the legs. Each measures 14¼ inches wide, 14¾ inches high and 11 inches deep.



**AXTELL ANTIQUES**, Deposit, N.Y. — A large carved burl mortar pictures on page 78 in “North American Burl Treen” by Steven Powers. It is 7 inches deep, 7 inches in diameter, and dated circa 1780.



**MISSOURI PLAIN FOLK**, Sikeston, Mo. — Early oval pantry box in the original blue paint, 13 by 10 by 5¾ inches.



**STEVEN F. STILL ANTIQUES**, Manheim, Penn. — Fast Freight toy wagon measuring 33 inches long.

**GARTHOEFFNER GALLERY**, Lititz, Penn. — Rare pair of pie-eyed Mickey/Minnie Mouse hooked rugs, circa 1930–40.



## MARY AND JOSHUA STEENBURGH

ANTIQUe FURNITURE AND FOLK ART  
Pike, New Hampshire



Stoneware Miniatures

2 5/8” jug incised: Mrs. S.G. Hazard Taunton (MA); 4 5/8” jug with blue floral decoration  
11” Maple Treenware deep dish

phone: 603.303.3072

e-mail: [josh@steenburgh.com](mailto:josh@steenburgh.com)

website: [www.maryandjoshua.com](http://www.maryandjoshua.com)



SPECIAL  
SHOW  
SECTION

THE 60TH ANNUAL  
New Hampshire Antiques Show

*In Loving Memory*  
of  
*Pam Boynton*

**a great woman, antique dealer, and friend**





# THE 60TH ANNUAL New Hampshire Antiques Show

SPECIAL  
SHOW  
SECTION

## Even At The New Hampshire Antiques Show, The Dealer List Alters As Some Come & Go

It has been ten years since the New Hampshire Antiques Dealers Association marked a half century of antiques shows and we are now taking our hats off to the association for another landmark, 60 years. So the question is, What has changed in the last ten years?

The location is the same, as is the floor manager, the complementary breakfast is close to being the same, dealers have been saving their best for this show, a big crowd will be on hand for the Thursday opening, and your favorite dealer will be awaiting you in the same spot he or she has had for years.

There has been one slight change. Thirty-three dealers listed as exhibitors in the 2007 show are not going to be in Manchester this year, just a fraction over three per year, which is remarkable when old age, sickness, retirement and passing are taken into consideration.

We thought it appropriate and interesting to mention all of them, names that are bound to stir up fond memories of good friends, and remind you of an antique or two from one of them that you still treasure. In no particular order they are, by name or shop name: Jeannine Dobbs, Estelle Glavey, Seaver & McLellan, Oriental Rugs Ltd, John D. Wahl, Candlewick Antiques, Penny & Ron Dionne, Yankee Smuggler, Lewis Scranton, Michael Hingston, Paul & Cheryl Scott, M.S. Carter, Nancy Sevatson, William Lary, Steven Rowe, Richard M. Plusch, Peter H. Eaton, David C. Morey American Antiques, Kathy Schoemer, Linda S. Fodor, The Tates, Charlie & Laurie Clark, John & Deborah Melby, Jane & Phil Workman, Courcier & Wilkins, CARA Antiques, Wayne Pratt & Co., Howard Oedel, Ron Bourgeault, Acorn Antiques – Elizabeth Robinson, The Teachers, Mad Anthony Books and Priscilla Hutchinson. Melissa Alden took over the booth of her mother, the late M.S. Carter, whom she worked with for years.

These are just a few of the dealers, along with hundreds of others, who have exhibited in the New Hampshire Antiques Show and, over a span of 60 years, have made and kept the New Hampshire Antiques Show a shining star in the world of antiques.

—R. Scudder Smith



MG ART & ANTIQUES, Merrimac, Mass. — Folk art roulette wheel.



KEN & ROBIN PIKE, Nashua, N.H. — A circa 1890 shield-shaped physician and surgeon sign with old black sand paint and gold lettering, measuring 22½ inches high and 18 inches wide.



DOUGLAS R. WYANT ANTIQUES, Cassopolis, Mich. — Indian pins.



JEWETT-BERDAN ANTIQUES, Newcastle, Maine — Detail of a late Nineteenth Century eagle and American shield plaque E. Pluribus Unum.

## THOMAS R. LONGACRE ANTIQUES



### Watermelon Still-Life

This large colorful oil on canvas depicts a sliced watermelon on a marble top table. Having great color and condition this unsigned painting was found in New Hampshire and is from the second half of the 19th century. The dimensions are 32 by 23 including the original hardwood frame.

Our 40th Year

Booth #3

tom@thomasrlongacre.com • www.thomasrlongacre.com • 603 876 4080



SPECIAL  
SHOW  
SECTION

THE 60TH ANNUAL  
New Hampshire Antiques Show

# STEPHEN / DOUGLAS

*Rockingham, Vermont*

802-463-4296

*Walpole, New Hampshire*

We are pleased to offer this highly sophisticated pair of American Country portraits in their original, rare, paint decorated frames. Probably Southeastern Ma. ca. 1835. 33½" x 42".

She writing a letter addressed Freetown Ma. dated 1835 to her "Rev'd (Revered) and dear brother". He, probably a botanist, poised against a library of labeled botanical volumes.

## KATE A. ALEX

Beaver Bog Rd., Warner, NH 03278  
603-491-1499



AN EXCEPTIONAL PR. OF COMPOSITION STONE "FRUIT AND FLOWER" COMPOTES, WITH A MOSSY OLD SURFACE AND WEATHERED PATINA. 13" T X 16" W



A LARGE HOOKED RUG OF TWO DOGS RECLINING ON A HOOKED RUNNER, IN THE STYLE OF MAGDALENA BRINER EBY (1832-1915). 78" L X 40" T. MOUNTED FOR DISPLAY.



FOLKY GOLFERS CHAIR HAVING A LEATHER SEAT AND BACK, USING ACTUAL CLUB HEADS FOR FEET. ARMS IN THE FORM OF CLUB SHAFTS AND METAL GOLF BALL FINIALS



FRENCH 20TH CENTURY HEFTY BRONZE HORSE URN CAPTURING THE REPRESENTATION OF HORSES IN RELIEF RUNNING IN A CIRCLE. UNMARKED. 10.25" TALL X 9" W.



GARTHOEFFNER GALLERY, Lititz, Penn. — Collection of early miniature chairs in paint.



MICHAEL & LUCINDA SEWARD, Pittsford, Vt. — Early Twentieth Century painted miniature bench.



JOHN CHASKI ANTIQUES, Camden, Del. — John Phelan trade sign, New York, circa 1880, measuring 42 inches high and 62 inches wide.



MG ART & ANTIQUES, Merrimac, Mass. — Antique playing card box with pinochle deck.



ED WEISSMAN ART & ANTIQUES, Naples, Fla. — Two enamel boxes, Samson, circa 1880-90.





SPECIAL  
SHOW  
SECTION

THE 60TH ANNUAL  
New Hampshire Antiques Show



**OLDE HOPE**  
ANTIQUES, INC.

P. O. Box 718, New Hope, PA 18938-0718  
115 E. 72nd St., New York, NY 10021  
By Appointment in NYC and New Hope  
215-297-0200 • info@oldehope.com  
[www.oldehope.com](http://www.oldehope.com)



**Rooster Weathervane**

*Pennsylvania, c.1900  
Sheet metal with an old  
white and red painted finish  
Ht. 38", W. 38"*





# THE 60TH ANNUAL New Hampshire Antiques Show

SPECIAL  
SHOW  
SECTION



JASON SAMUEL FINE ART & ANTIQUES, Milford, N.H. — Nineteenth Century American School oil on canvas of George Washington's headquarters, Newburgh, N.Y. It measures 20 by 24 inches housed in a period wood frame.



DENNIS & DAD ANTIQUES, Fitzwilliam, N.H. — Diminutive decorated creamware teapot with strap handle and pierced gallery, 5 1/4 inches high.

JEWETT-BERDAN ANTIQUES, Newcastle, Maine — Brunswick, Maine, Odd Fellows sign from the Pejepscot Lodge.



A.E. RUNGE JR, ORIENTAL RUGS, Yarmouth, Maine — Antique Persian Heriz (aka Serapi) Village carpet, 12 feet 1 inch by 8 feet 9 inches, very good to fine condition, dating circa 1903. Saving it for the NHADA Show.



KELLY KINZLE, New Oxford, Penn. — Pair of Windsor chairs in an old surface, New England, circa 1790.



DOUGLAS R. WYANT ANTIQUES, Cassopolis, Mich. — Folk horse painting.

## THE NORWOODS' SPIRIT OF AMERICA CHOICE AMERICANA OF THE 18<sup>TH</sup> AND 19<sup>TH</sup> CENTURIES

# Folk Art: Fine, Fancy and Fun

Portraits Sculpture Theatres Trade Signs Watercolors

Folk Art Fraktur Hooped Rugs Needlework Painted Smalls



Charming mid-19th century oil on canvas Portland, Maine landscape from a longtime private collection.



Early and exceptional cigar store "Virginian" figure, with fine provenance.



Aesthetically pleasing "1863" equine and sulky rider portrait.

DOUG AND BEV NORWOOD

410.252.2012 [spiritofamerica@comcast.net](mailto:spiritofamerica@comcast.net)



SPECIAL  
SHOW  
SECTION

THE 60TH ANNUAL  
New Hampshire Antiques Show

# BOX TOPS



Steven F. Still

*Antiques*

1717 South Colebrook Road • Manheim, PA 17545  
Phone: (717) 459-3595 • Cell: (717) 682-0410

VISIT MY NEW WEBSITE AT  
[www.stevenstillantiques.com](http://www.stevenstillantiques.com)



# THE 60TH ANNUAL New Hampshire Antiques Show

SPECIAL  
SHOW  
SECTION



**MICHAEL & LUCINDA SEWARD, Pittsford, Vt.** — Nineteenth Century stoneware pitcher with bird decoration.



**MG ART & ANTIQUES, Merrimac, Mass.** — Nova Scotia paddletail eider, ex Roger Williams collection.

**MISSOURI PLAIN FOLK, Sikeston, Mo.** — Firkin in the original paint decoration measuring 6½ inches tall.



**PEWTER & WOOD ANTIQUES, Enfield, N.H.** — Blue carved dome top box dating from the early Nineteenth Century and measuring 24 inches wide, 12¼ inches deep and 9½ inches high.



**DENNIS & DAD ANTIQUES, Fitzwilliam, N.H.** — Colored bisque hen and ducks on their nests, late Nineteenth Century, measuring 6¼ inches wide.

## NATHAN LIVERANT AND SON, LLC ANTIQUES



The Sweepstakes of New York in 1859.  
Signed by Thomas Willis (c.1840-1925) of Brooklyn, New York.



168 SOUTH MAIN STREET  
P.O. BOX 103, COLCHESTER, CT 06415  
(860)537-2409 FAX (860)537-0577

Visit us at: [liverantantiques.com](http://liverantantiques.com)

Follow us at: [www.facebook.com/NLS.antiques](https://www.facebook.com/NLS.antiques)  
[mail@liverantantiques.com](mailto:mail@liverantantiques.com)





SPECIAL  
SHOW  
SECTION

THE 60TH ANNUAL  
New Hampshire Antiques Show

**Frank & Barbara Pollack**  
*American Antiques & Art*

1214 Green Bay Road, Highland Park, IL 60035  
Tel: 847-433-2213  
Cell: 847-922-5141  
barbarapollack@comcast.net



**A Rare New Hampshire Schoolgirl Drawing  
Signed "Hannah P. Badger 1811 & 12"**

Watercolor and pencil on paper depicting an interior scene where Hannah Pearson Cogswell Badger (1791-1869) and her sister Julia are instructing a female class at The Atkinson Academy in Atkinson, New Hampshire. The Academy, one of the oldest surviving co-educational schools in the U.S. was founded in 1787 as a school for boys and began admitting females in 1791.

Hannah and Julia are seated in Windsor chairs surrounded by their students, books and a globe in an elegant classroom beautifully appointed with floor to ceiling windows, billowy curtains, walls with moldings and a stenciled border and an amazing colorfully painted floor cloth.

10 7/8 in x 15 in sight size 16 in x 19 1/2 in framed.

This is truly a masterwork of schoolgirl art giving us a glimpse into the schooling and importance of female education in America's history.

Exhibited: The Fenimore Art Museum, Cooperstown, New York. "The Instruction of Young Ladies: Arts From Private Girls' Schools and Academies in Early America," Oct 1 - Dec 31, 2016.

Published: *The Instruction of Young Ladies* By Robert Shaw and Jane Katcher, Pgs. 36 & 58



I will be in Sunapee, New Hampshire, until late August where I will have a representative selection of my inventory available. Please call me at 603-763-2403

Box 344, Sunapee  
New Hampshire  
03782  
603.763.2403



# THE 60TH ANNUAL New Hampshire Antiques Show

SPECIAL  
SHOW  
SECTION



**AXTELL ANTIQUES, Deposit, N.Y.** — Portrait, oil on canvas mounted on board, unrestored, dates circa 1810 and measures 20 by 21 inches.



**JOHN CHASKI ANTIQUES, Camden, Del.** — Turned maple and pine cross base stand, New England, circa 1700.



**JEWETT-BERDAN ANTIQUES, Newcastle, Maine** — One-of-a-kind spotted horse pull toy with forged iron work, circa 1860.

**KELLY KINZLE, New Oxford, Penn.** — Pie safe from Randolph County, West Virginia, circa 1835, in outstanding condition.



**GARTHOEFFNER GALLERY, Lititz, Penn.** — Five early heart and hand cookie cutters, Lancaster, Penn., circa 1860.



**STEVEN F. STILL ANTIQUES, Manheim, Penn.** — Eighteenth Century hour glass.

## John H. Rogers, Antiques, LLC

### Ash Handled Burl Bowl c: 1800

Probably New England, although closely related bowls originated in New York State as well.

Handle and bowl are one... made from the same piece of wood with no seam. The molded handle is arched with a scalloped terminus resembling a turtle head. The rim of the bowl is bevelled; its concave base has a flat bottom. A tight closed fissure in the bottom was probably caused by adding hot stones to heat liquid. Extremely rare, outstanding and beautiful!

Dimensions: H - 7" L - 20.5" Bowl diameter - 12.25"



PO Box 234, Elkins, New Hampshire 03233  
603-526-6778 \* 603-454-4646-cell \* [jhwithrow@yahoo.com](mailto:jhwithrow@yahoo.com)





SPECIAL  
SHOW  
SECTION

THE 60TH ANNUAL  
New Hampshire Antiques Show

Scott Bassoff  
Sandy Jacobs  
ANTIQUES



Rare decorated stepback cupboard with great abstract paint swirls and stippling.



Charming naive painting of 2 children with pet baby skunk



Vibrant floral decorated box. each side with different decoration.  
NY state or New England origin.

Swampscott, MA 01907 | 603.801.5532 mobile

[www.sandyjacobsantiques.com](http://www.sandyjacobsantiques.com) | [sandyjnh1@gmail.com](mailto:sandyjnh1@gmail.com) | [www.scottbassoffsandyjacobsantiques.com](http://www.scottbassoffsandyjacobsantiques.com)





# THE 60TH ANNUAL New Hampshire Antiques Show

SPECIAL  
SHOW  
SECTION



**THOMAS R. LONGACRE**, Marlborough, N.H. — Sculptural carved and painted wooden utility box in the original red and black paint, dating from the first half of the Twentieth Century.



**DOUGLAS R. WYANT ANTIQUES**, Cassopolis, Mich. — Fish plaque.



**MICHAEL & LUCINDA SEWARD**, Pittsford, Vt. — Silk pinball and small papered box.



**DENNIS & DAD ANTIQUES**, Fitzwilliam, N.H. — Early blue shell edge children's plates, circa 1820.

**KEN & ROBIN PIKE**, Nashua, N.H. — Jester doll measuring 19 inches tall and dating from the early Twentieth Century.



**JASON SAMUEL FINE ART & ANTIQUES**, Milford, N.H. — William Aiken Walker (1838-1921), oil on board, signed lower left, 8-7/8 by 14-7/8 inches framed.



**GARTHOEFFNER GALLERY**  
*Antiques*

Pat and Rich Garthoeffner • Lititz, Pa. 17543 • 717-471-4694 or 717-581-0935



HOOKED RUG - WOOL ON LINEN - 1870 - 54" LONG



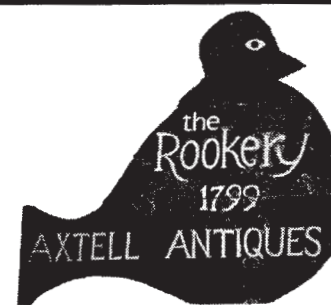


### Baltimore Quilt

A rare Baltimore crib quilt made by the Varick family of Baltimore, MD. It features bright colors and sewn on appliques including two eagles and an American flag. It measures 50" x 64". Original condition. CA 1846.

• FOLK ART • BASKETS & STONWARE

EARLY LIGHTING  
• REDWARE



*Axtell Antiques*

- EARLY AMERICANA -  
RICHARD S. AXTELL

1 River St., Deposit, NY 13754  
Now open by appointment: 607-467-4444  
e-mail: rsaxtell@msn.com  
www.therookerybookery.com



HEARTH ACCESSORIES • AMERICAN  
COUNTRY FURNITURE • TREENWARE



# THE 60TH ANNUAL New Hampshire Antiques Show

SPECIAL  
SHOW  
SECTION



JOHN CHASKI ANTIQUES, Camden, Del. — Slip-decorated pearlware porter mug, make-do repair, English, circa 1830.

MG ART & ANTIQUES, Merrimac, Mass. — A circa 1830 onion lantern with ribbed glass font and drop burner.



PEWTER & WOOD ANTIQUES, Enfield, N.H. — Nineteenth Century mustard bowl measuring 14¼ by 14¼ inches in diameter and 4 inches high.



MISSOURI PLAIN FOLK, Sikeston, Mo. — Sanded and gold gilt sign offering a "Summer Rental," circa 1900, 16 by 9½ inches.

STEVEN F. STILL ANTIQUES, Manheim, Penn. — Miniature painted Pennsylvania hutch table.



## Jef & Terri Steingrebe

PO Box 2268  
New London, NH 03257  
603 491 1767  
jefs@sunapee.net  
www.Jefsteingrebe.com

A tall cowboy and a polychromed dog, wood carving by the same hand, found in an attic in Montgomery County Pa. mid 20th century. And a painted cast metal cowboy desk lamp with apparently the originally painted light bulb that still works





SPECIAL  
SHOW  
SECTION

THE 60TH ANNUAL  
New Hampshire Antiques Show



Pair of 1825 Bunker Hill Monument Ribbons presented to veterans of the American Revolution. These belonged to Lemuel Coffin of Newburyport. Written on the backside of the frame is the following inscription: "Badges of Lemuel Coffin of Newburyport—one of Gen. Washington's Life Guards. Donated by Mrs. Heyde." We believe these ribbons were worn at the laying of the Bunker Hill Monument cornerstone ceremony attended by Gen. Lafayette and other Revolutionary War Veterans. Given that Coffin died in 1837, these pre-date the Monument's 1843 dedication ceremony. Coffin was a veteran of Lexington and Concord, and he served in the Continental Army from 1777 - 1779. Housed in their period frame (6.75" x 5.5"). We could find no other record of this pair of ribbons, let alone ones having an important provenance.



c. 1830's view of Lake Winnepesaukee from Center Harbor, NH, oil on canvas (lined), 11.75" x 13.75"



1775 hand-colored mezzotint of "George Washington, Esq. General and Commander-in-Chief of the Continental Army in America." Published by C. Shepherd after a painting by Alexander Campbell of Virginia. 14" x 10" (image), minor defects.



Salt print photograph of Abraham Lincoln attributed to Roderick Cole, c. 1858, 7.25" x 5". This is accompanied by a 1904 hand-written ownership note.

RESSER-THORNER  
ANTIQUES  
*A single-owner shop in the New England tradition*



603-540-4712  
695 River Road, Manchester, NH 03104  
*By Appointment*





# THE 60TH ANNUAL New Hampshire Antiques Show

SPECIAL  
SHOW  
SECTION



ROBERT T. FOLEY ANTIQUES, Gray, Maine — Late Nineteenth Century sign from Concord, N.H.



KELLY KINZLE, New Oxford, Penn. — Angel Gabriel weathervane, Pennsylvania, original paint, measuring 42 inches long.



CHERRY GALLERY, Damariscotta, Maine — Steer horn rod/rifle wall rack with back-board shaped as a steer's head.



THOMAS R. LONGACRE, Marlborough, N.H. — "Hummingbird," signed Frank Finney, beautifully carved and painted and on the original mount. It dates from the second half of the Twentieth Century.



GARTHOEFFNER GALLERY, Lititz, Penn. — Oil on canvas of a cat, attributed to Alfred Montgomery, circa 1890.



AXTELL ANTIQUES, Deposit, N.Y. — This key is a large figural hollow tin blacksmith's trade sign with the original gilding. It dates circa 1810 and measures 20 inches long.

## JASON SAMUEL FINE ART AND ANTIQUES



THE GALLERY AT  
NEW HAMPSHIRE ANTIQUE CO-OP

323 ELM STREET  
MILFORD, NH 03055

*35 minutes west of Manchester, NH  
20,000 sq. ft. antique shop & fine art gallery*

603.673.8499  
NHANTIQUESCOOP.COM

*Frank Leonard Stick (1884-1986)  
Oil on canvas, 38" h x 27" w*



SPECIAL  
SHOW  
SECTION

THE 60TH ANNUAL  
**New Hampshire Antiques Show**

# 18 HEARTS...EQUALS



**ONE LOVELY RUG**  
**40" X 22" - BOOTH 50**



WWW.MISSOURIPLAINFOLK.COM

573-620-5500





# THE 60TH ANNUAL New Hampshire Antiques Show

SPECIAL  
SHOW  
SECTION



**FRANK & BARBARA POLLACK**, American Antiques & Art, Highland Park, Ill., and Sunapee, N.H. — A rare stuffed white work bed cover, American, New England, probably Massachusetts, circa 1800. An extraordinary work of art constructed of three panels and depicting a footed bowl with scalloped quilting, containing an arrangement of exotic flowers and surrounded by a wide meandering floral border. This spread is in two layers, a fine cotton for the face and a coarser muslin for the back. It measures 94½ by 101 inches. For similar examples see *Needlework An Historical Survey* by Betty Ring, page 110–112, figure 3, and *Plain and Fancy American Women and Their Needlework 1700–1850* by Susan Burrows Swan, page 157–158, figure 81.



**JEWETT-BERDAN ANTIQUES**, Newcastle, Maine — Folky silhouette of a young lady with painted details.



**JEF & TERRI STEINGREBE**, New London, N.H. — A wonderful, well-preserved Schoenhut Humpty Dumpty Circus with lots of original accessories and props.



**RESSER-THORNER ANTIQUES**, Manchester, N.H. — Nineteenth Century carved figure of Shakespeare, 16½ inches high.



**DOUGLAS R. WYANT ANTIQUES**, Cassopolis, Mich. — Wooden owl decoy.

## MICHAEL & LUCINDA SEWARD

Pittsford, VT 05763 ★ 802-236-5652 ★ [antinfo@sover.net](mailto:antinfo@sover.net)

[www.michaelandlucindasewardantiques.com](http://www.michaelandlucindasewardantiques.com)



A collection of 19th c. velvet fruit pincushions in a tin anniversary basket.



Small 19th c. watercolor of a child in a landscape.



SPECIAL  
SHOW  
SECTION

THE 60TH ANNUAL  
New Hampshire Antiques Show



GARTHOEFFNER GALLERY

*Antiques*

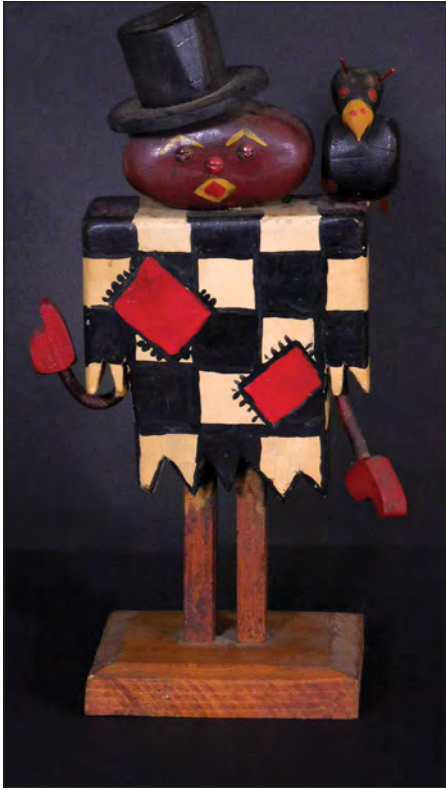
Pat and Rich Garthoeffner • Lititz, Pa. 17543 • 717-471-4694 or 717-581-0935





# THE 60TH ANNUAL New Hampshire Antiques Show

SPECIAL  
SHOW  
SECTION



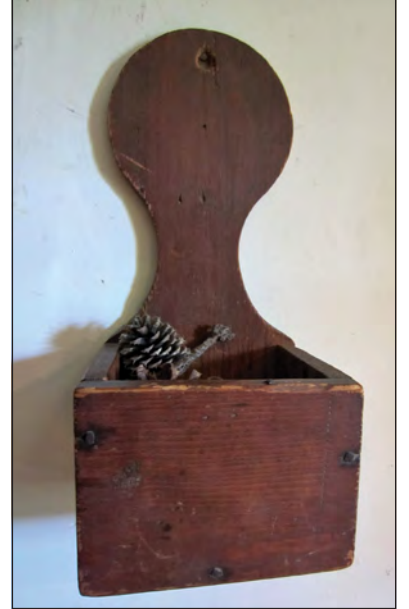
**STEVEN F. STILL ANTIQUES**, Manheim, Penn. — Folk art carved and painted man with bird on his shoulder.



**GAIL & DON PIATT ANTIQUES**, Contoocook, N.H. — Watercolor portrait of a lovely lady in a blue dress.



**KEN & ROBIN PIKE**, Nashua, N.H. — An early Twentieth Century wooden, double-sided Dalmatian doorstop in the original hand-painted decoration. It measures 12 inches high.



**NEVERMORE ANTIQUES**, Dover, N.H. — A circa 1800 New England wallbox in the original red paint and measuring 14 inches high, 6 inches wide and 5½ inches deep.



**GARY F. YEATON ANTIQUES**, Concord, N.H. — Academy-decorated box with brass ring handles and stamped brass lions feet. It is 5¼ inches tall, 10 inches wide, 8 inches deep.



**JOHN CHASKI ANTIQUES**, Camden, Del. — Carved and paint-decorated eagle plaque, Pennsylvania, dated 1917 and measuring 11½ by 15 inches.



Large painted wooden advertising cigarette lighter. 23 1/2 inches tall 15 inches wide and 5 inches deep. Bottom opens to reveal shelves for display.

## THOMAS M. THOMPSON ANTIQUES



Pembroke, NH

(603) 496-8497

Also Exhibiting at Thos. Bartlett Antiques,  
and Oddments in Chichester, N.H.



SPECIAL  
SHOW  
SECTION

THE 60TH ANNUAL  
New Hampshire Antiques Show



Please stop by Booth #32 to check out all of the great material we have squirreled away for this year's 60th Anniversary Show!



Jeff and Holly Noordsy

18 Route 74, Cornwall, VT

[www.noordsyantiques.com](http://www.noordsyantiques.com) • [jeffnhol@shoreham.net](mailto:jeffnhol@shoreham.net) • 802-462-2901





# THE 60TH ANNUAL New Hampshire Antiques Show

SPECIAL  
SHOW  
SECTION



NEVERMORE ANTIQUES, Dover, N.H. — A floral oil on board in blue vase, circa 1800, Virginia.



JOHN H. ROGERS ANTIQUES, LLC, Elkins, N.H. — Red-painted trinket box signed Enos Bapsett Hamden Nov 10, 1805.



GARTHOEFFNER GALLERY, Lititz, Penn. — Collection of early Nantucket baskets.



STEVEN-DOUGLAS ANTIQUES, Rockingham, Vt. & Walpole, N.H. — Three exceptional pieces of early Nineteenth Century English mocha-ware.



HOLLIS E. BRODRICK, Arts & Artifacts of Early America, Portsmouth, N.H. — A rare copper tea kettle with cast bell metal mounts, marked "Boston," probably late Eighteenth Century.



A watercolor memorial for Lemuel Rice. Died age 4 years.  
Barre, Worcester county, Massachusetts.  
Lemuel Rice was born in 1817 and died in 1821, 13.5" x 17.5"



Schoolgirl reward of merit watercolor to Julia Jones at Mrs Bazeley's seminary located at Galway, Saratoga county, New York. Dated December 21, 1838, 10.5" x 11.25"

## Bill Kelly

936 Cape Road

Limington, ME 04049

207-838-2849 | bill.kelly419@yahoo.com



SPECIAL  
SHOW  
SECTION

THE 60TH ANNUAL  
New Hampshire Antiques Show



Paint Decorated Tall Case Clock By Thomas Matteson, South Shaftsbury, Vermont, Circa 1825-1830



**Michael Whittemore**  
Antiques & Folk Art

980 Coronado Drive, Punta Gorda, Florida 33950  
860-428-1135



# THE 60TH ANNUAL New Hampshire Antiques Show

SPECIAL  
SHOW  
SECTION



A.E. RUNGE JR, ORIENTAL RUGS, Yarmouth, Maine — Antique Persian Bijar Village rug, 6 feet 9 inches by 4 feet 5 inches, and in very fine condition. It dates circa 1910 — \$4,500



PEWTER & WOOD ANTIQUES, Enfield, N.H. — Folky black and white dog, punch-work, circa 1920s, mounted and measuring 22¼ by 33½ inches.



PETER SAWYER ANTIQUES, Exeter, N.H. — Rare tall clock by Jacob Jones, Pittsfield, N.H.



JEWETT-BERDAN ANTIQUES, Newcastle, Maine — Selection of Nineteenth Century paint and paint-decorated bail handle pantry boxes.



AXTELL ANTIQUES, Deposit, N.Y. — A unique tin "crown" candelabra, 7 inches in diameter, and dating circa 1810.

## ED WEISSMAN Art and Antiques Booth # 49 Naples, Florida



239 450-5585

Mailing Address Only: 843 Reef Point Circle, Naples, FL 34108



The Interrupted Serenade  
by Caesar Auguste Detti (1847-1914)  
O/C, Signed: // Size: 10 x 14" Frame: 19 x 23"

Satinwood Lady's Desk  
c.1790, accentuated with ebony string inlays,  
mahogany cross banding, and painted foliate swags,  
garlands and urns.  
Ht: 45" W: 28 1/2" D: 18 1/2"

Historical Vermont Mahogany Lap Desk  
belonging to Samuel Crafts (1768-1853), with a well  
appointed interior featuring a hidden compartment and  
containing a copy of Crafts's inventory of  
"The President's House", taken  
while Crafts was a U.S. Senator from Vermont.  
Overall Ht: 25" W: 21" D: 11 1/2"



Vermont family provenance

Shows or By Appointment Only

[quillcutter@comcast.net](mailto:quillcutter@comcast.net)



SPECIAL  
SHOW  
SECTION

# THE 60TH ANNUAL New Hampshire Antiques Show

AMERICA'S LEADING ANTIQUE SAMPLER AND NEEDLEWORK DEALER



est. 1947

# M. Finkel & Daughter.

AMERICA'S LEADING ANTIQUE SAMPLER AND NEEDLEWORK DEALER

936 Pine Street • Philadelphia, PA 19107 • tel: 215-627-7797 • fax: 215-627-8199

www.samplings.com • mailbox@samplings.com



# THE 60TH ANNUAL New Hampshire Antiques Show

SPECIAL  
SHOW  
SECTION



ED WEISSMAN ART & ANTIQUES, Naples, Fla. — Group of brass objects.



THOMAS R. LONGACRE, Marlborough, N.H. — New England finely cut silhouette of a gentleman in profile and in the original black frame. It dates from the Nineteenth Century.



GAIL & DON PIATT ANTIQUES, Contocook, N.H. — J. Joseph Enneking landscape, oil on artist board, appears to be in the original frame.



STEVEN-DOUGLAS ANTIQUES, Rockingham, Vt. & Walpole, N.H. — Two very scarce Nineteenth Century Canton pepper shakers, 3½ inches tall.



NEWSOM & BERDAN ANTIQUES & FOLK ART, Thomasville & Abbottstown, Penn. — Colorful early New England gamewheel.



CHERRY GALLERY, Damariscotta, Maine — Old Hickory hoop-arm two-seat settee with its original rattan cane weaving.

# Jonathan Trace

BY APPOINTMENT

POST OFFICE BOX 7106

PORTSMOUTH, NH 03802

(603)431-1197

JTRACEANTIQUES@MAC.COM

We are always interested in purchasing fine American silver and furniture—single items or collections.

American Silver Cann  
Rufus Greene  
Boston, Circa 1730





# Dennis & Dad Antiques

Dennis and Ann Berard

33 NH Route 119E, Fitzwilliam, NH 03447

603-585-9479

antiques@dennisanddadantiques.com • www.dennisanddadantiques.com



Pseudo Tobacco Leaf 3 pc. Chinese Export Soup Tureen ca. 1785



Liverpool Creamware Jug showing 16 States with E Pluribus Unum Eagle in center (obverse) and Liberty and Independence (reverse) 7 1/8 inches high ca. 1800

One Gallon American Stoneware Jug J & E Norton Bennington Vt., decorated with four birds sitting in two trees, extremely rare, possibly unique



Brown "Picturesque Views, New York Hudson River" Staffordshire Platter 22 inches wide



Hampshire Pottery Majolica Teapot, green, brown and black mottled decoration, 6 1/4" ca. 1900



Dark Blue "Castle Garden Battery, New York" Staffordshire Platter, Enoch Wood & Sons 18 1/2 inches wide



# THE 60TH ANNUAL New Hampshire Antiques Show

SPECIAL  
SHOW  
SECTION



Beautiful 18th century woman's pocket from Enfield, CT., worked in colorful flower and vine pattern.

From the personal collection of Lewis Scranton.

## GAIL & DON PIATT ANTIQUES



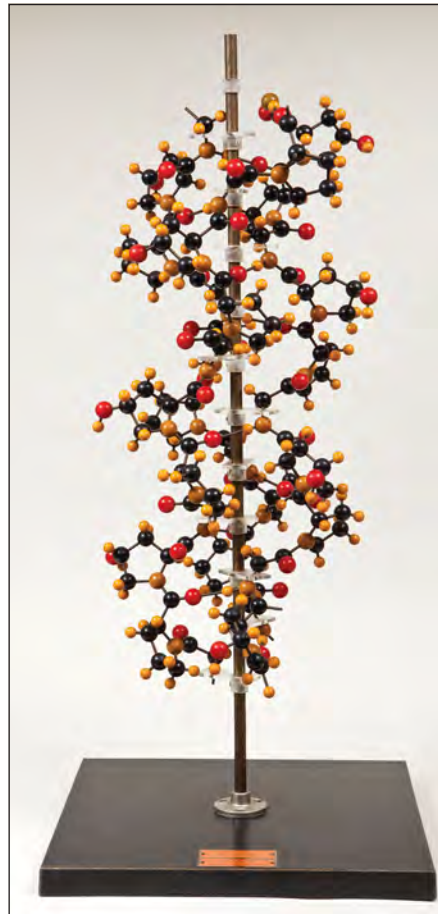
1221 Briar Hill Road,  
Contoocook, NH 03229

By Appointment  
603-746-4568

Visit us at  
Thos. Bartlett Antiques  
formally Keepers and Austins  
at the same location



ROBERT T. FOLEY ANTIQUES, Gray, Maine — Interesting sandpaper and gold leaf sign.



FRANK & BARBARA POLLACK, American Antiques & Art, Highland Park, Ill., and Sunapee, N.H. — A Twentieth Century scientific object is executed in red, black and mustard yellow Bakelite, Lucite and metal. A label affixed to the base reads "Metaloglass, Inc, 400 Northampton St., Boston 18, Mass. USA Collagen Magnification 200,000,000x." It measures 33½ inches high with a 12-inch-square base.



NEVERMORE ANTIQUES, Dover, N.H. — Early Eighteenth Century tapeloom with rosehead nail repairs, New England origin.



NATHAN LIVERANT AND SON, LLC, Colchester, Conn. — Yellow paint-decorated child's size Windsor armchair, New England, 1820-40.



THOMAS R. LONGACRE, Marlborough, N.H. — Early fish form iron and sheet metal banner weathervane, untouched weathered surface, 42 inches long and dating from the mid-Nineteenth Century.





SPECIAL  
SHOW  
SECTION

THE 60TH ANNUAL  
**New Hampshire Antiques Show**



**Hollis E. Brodrick**

Arts & Artifacts of Early New England



A detail of an important, large 17thc New England storage chest, PROFUSELY DECORATED with INCISED LUNNETTES, ROSETTES, etc.. Descended in the THORNDIKE FAMILY- No. Shore of Massachusetts, c1670- 1700

Unusually large, and boldly turned, NH BANNISTER BACK ARMCHAIR in original red, c1750-70. Together with an 18thc mezzotint print: The Death of General Wolfe at Quebec. Wolfeboro, NH was named after him in 1759.



A group of early decorative arts c1680-1760



UNTOUCHED! Colonial Massachusetts blanket chest- has great AURA- worn original red paint. Together with a rare colonial New England pine mirror w/original painted decoration, c1740-50

Mailing Address: PO Box 30 | Portsmouth, NH 03802 | 603-828-6158  
email: hollisantiques@gmail.com



Open by Appointment  
171 Washington Street, Portsmouth, NH  
All items subject to prior sale





# THE 60TH ANNUAL New Hampshire Antiques Show

SPECIAL  
SHOW  
SECTION



Dennis Berard — 2003



Melvyn Wolf — 2006



Bob and Lee Burgess — 2006



Kevin Tulimieri — 2007



Hollis Broderick — 2005



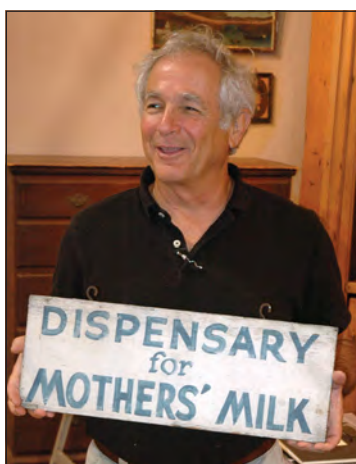
Sandy Jacobs — 2007



James A. Craig and Judy Loto — 2014



Stephen Corrigan — 2005



Arthur Liverant — 2010

## FACES Present & Past



Elizabeth M. Robinson — 1998



Terri Steingrebe — 2005



Kathy Schoemer, left, and  
Bev Longacre — 2006



Russ Goldberger — 2007



Michael Seward — 2010



Paul DeCoste — 2013



Ron Bourgeault, left,  
with Howard Oedel — 2007



Tommy Thompson at  
set-up time. — 2006



SPECIAL  
SHOW  
SECTION

# THE 60TH ANNUAL New Hampshire Antiques Show



Kathy Schoemer, Tom Longacre, Gail Piatt, and Governor John Lynch — 2007



When the doors open on the first day of the show, just inside the entrance is no place to be standing.



Michael and Sally Whittemore — 2005



Suzanne Courcier and Robert Wilkins — 2005



Ken and Robin Pike — 1991



Louis Scranton — Undated



Gail Savage, left, and Pam Boynton — 2007



Paul Scott — 2005

## FACES Present & Past



Scott Bassett — 2014



The gang in 2006



Cheryl Scott and Pat Bell — 2006



# THE 60TH ANNUAL New Hampshire Antiques Show

SPECIAL  
SHOW  
SECTION



**GAIL & DON PIATT ANTIQUES**, Con-  
toocook, N.H. — Early wooden com-  
pote in original red stain, beautiful  
turnings, and in excellent condition.

**JEFF AND HOLLY NOORDSY**, Corn-  
wall, Vt. — Exuberantly decorated  
Nineteenth Century gutta percha  
snuff box.



**JEWETT-BERDAN ANTIQUES**, Newcastle, Maine — Blue sand sign  
signed Hill Co., circa 1900.

**GARTHOEFFNER  
GALLERY**, Lititz, Penn.  
— Pair of exercise clubs  
in red and black paint  
with gold stars.



**CHERRY GALLERY**, Damariscotta, Maine — Framed  
watercolor of a ruffed grouse on a hollow log.



**JOHN CHASKI ANTIQUES**, Camden, Del.  
— Chalkware watch hutch, Pennsylva-  
nia, circa 1850, measuring 11 inches tall.

## JUDITH & JAMES MILNE

81 BROADWAY, KINGSTON, NY | 917 402 1778 | [www.milneathomeantiques.com](http://www.milneathomeantiques.com) | [milneinc@aol.com](mailto:milneinc@aol.com)



Will return Sign - 26" H x 20" W x 5" D



Black boy - 48" H x 16" W x 28" D



BarBecue Sign - 36" L x 16" H x 5" D



SPECIAL  
SHOW  
SECTION

THE 60TH ANNUAL  
**New Hampshire Antiques Show**



**Folk Art Bird Tree**

An iconic piece of American folk art made by Harvey Kinsey (1878-1964) of Lancaster County, Pennsylvania. Circa 1920's. Height: 48" Illustrated in *Just For Nice*, p. 36.



**Kelly Kinzle** [www.kellykinzleantiques.com](http://www.kellykinzleantiques.com) | [kellykinzle@comcast.net](mailto:kellykinzle@comcast.net) | 717-495-3395



# THE 60TH ANNUAL New Hampshire Antiques Show

SPECIAL  
SHOW  
SECTION



Russ & Karen Goldberger, Rye, N.H. — 2007



Don and Gail Piatt, Contoocook, N.H. — 1998

## A Look At Shows Over Years Past



Bert Savage, Larch Lodge, Center Strafford, N.H. — 1998



Thomas Thompson,  
Northfield, N.H. — 1998



William Lewan Antiques,  
Fitzwilliam, N.H. — 1998



Kate A. Alex & Co., Warner, N.H. — 2007



M. Finkel & Daughter, Philadelphia — 2007



William Lary, Dublin, N.H. — 1998



Jef and Terri Steingrebe, New London, N.H. — 2007



Dennis & Dad Antiques, Fitzwilliam, N.H. — 2007



SPECIAL  
SHOW  
SECTION

# THE 60TH ANNUAL New Hampshire Antiques Show



Kathy Schoemer American Antiques,  
Acworth, N.H. — 2007



Courcier and Wilkins, Austerlitz, N.Y. — 1998



Pam Boynton/Martha Boynton,  
Groton/Townsend, Mass. — 1998



Penny & Ron Dionne, Willington, Conn. — 1998



Frank and Barbara Pollock American Antiques, Highland Park, Ill.  
& Sunapee, N.H. — 2007



Jewett-Berdan, Newcastle, Maine — 2007



Peter Sawyer, Exeter, N.H. — 1998



Ed Weissman, Antiquarian, Portsmouth, N.H. — 2007



Rustic Accents, Nashua, N.H. — 2007



# Jewett-Berdan



Recently rediscovered paint decorated child's desk on frame signed "Morrison Atwood, Hampstead, NH. July 1840." Measuring 28" T x 18" W x 12.5" D. Last seen in the *Magazine Antiques* March 1968 ex. S. Prescott Fay Collection.

VISIT US IN BOOTH #47, LOWER LEVEL

**Thomas J. Jewett**

15 Hopkins Hill Road  
Newcastle, Maine 04553

**Charles P. Berdan**



(207) 563-3682  
jewett-berdan@roadrunner.com  
www.jewettandberdan.com





SPECIAL  
SHOW  
SECTION

THE 60TH ANNUAL  
New Hampshire Antiques Show



# Jewett-Berdan



VISIT US IN BOOTH #47, LOWER LEVEL

**Thomas J. Jewett**

15 Hopkins Hill Road  
Newcastle, Maine 04553

**Charles P. Berdan**

(207) 563-3682

[jewett-berdan@roadrunner.com](mailto:jewett-berdan@roadrunner.com)

[www.jewettandberdan.com](http://www.jewettandberdan.com)





# THE 60TH ANNUAL New Hampshire Antiques Show

SPECIAL  
SHOW  
SECTION



**JEWETT-BERDAN ANTIQUES, Newcastle, Maine —**  
Pair of carved and painted wood birds.



**PETER SAWYER ANTIQUES, Exeter, N.H. —**  
Fine pair of Federal mahogany side chairs,  
Salem, Mass.



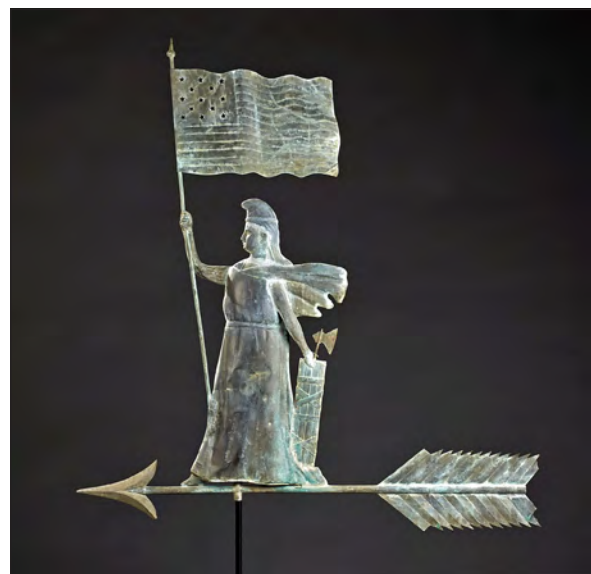
**KEN & ROBIN PIKE, Nashua, N.H. —** Horse weathervane in copper with zinc head, gold gilt, 26 inches long, circa 1900.



**FRANK & BARBARA POLLACK, Highland Park, Ill., & Sunapee, N.H. —** A large molded sheet copper and cast zinc rooster weathervane, New England, found in Manchester, N.H., circa 1880-1900. It is all original condition with a few bullet holes and one "farmer's repair" at the top of its head. It measures 30 inches high, 24 inches wide. The provenance lists Wortkowski family on Chestnut Street, Manchester, N.H.



**JEF & TERRI STEINGREBE, New London, N.H. —** Detail of the acrobat Schoenhut clowns from the Humpty Dumpty Circus.



**KELLY KINZLE, New Oxford, Penn. —** Lady Liberty weathervane, New York, late Nineteenth Century, 39 inches high.

## YANKEE DOODLE DANDY



### Patriotic Centennial, Fourth of July Costume, 1876

Made by Lucretia Gardner Osgood  
(1838-1908)  
For her son, Herman Abbot Osgood  
(1873-1935)  
To wear to the Bunker Hill Celebration  
at Charlestown, MA, 1876

In the photo, Herman's daughter,  
Dorothy, age 4, wearing the suit on  
July 4, 1923.

Plain woven cotton.  
Brass, star buttons on jacket, cuffs  
and Sailor Collar on the back.

Top length: 13 inches  
Bottom length: 24 inches



## STEPHEN SCORE

[stephenscoreantiques@gmail.com](mailto:stephenscoreantiques@gmail.com)

Boston, MA ★★ ★ (617) 227 - 9192



SPECIAL  
SHOW  
SECTION

THE 60TH ANNUAL  
New Hampshire Antiques Show

*From the Personal Collection of  
Pamela Boynton*



Toleware match safe, original paint  
6"Tx4½"W, black with red  
and yellow decoration



Prancing horse weathervane,  
unknown maker, 32"Lx23T,  
found in Maine many years ago



Dog squeak toy, large, 9"Tx7½Lx4"W,  
great paint, black & white dog,  
red base, does not squeak



Small watercolor memorial,  
framed 10"x9", sight 9"x7"  
"Sacred to the memory of John  
Johnson" died 1796, very colorful



Blue hatbox with 3 salmon colored birds,  
2 birds on the base, 1 bird on the top,  
slight paper lost, 4"Tx4¾"D



Unusual potato stamped wall basket,  
single handle, mint condition,  
11½" to top of handle, 9½"Wx7½"D



Sheep on platform 5"Lx5"T,  
great condition



Decorated box, New York, on turned  
legs, multiple compartments inside,  
green with gold leaf, 11"x7"x4"



Rare small scissor toy, 2"W when folded,  
6"W when expanded, animals are half inch  
tall, 7 sheep, 2 dogs and 1 person

**PAM & MARTHA BOYNTON**  
82 Pleasant St  
Groton, MA 01450  
978-448-5031 / 978-835-5920



# THE 60TH ANNUAL New Hampshire Antiques Show

SPECIAL  
SHOW  
SECTION



**JEWETT-BERDAN ANTIQUES, Newcastle, Maine** — Masonic lodge wall plaque made for the son of a Mason, circa 1900.

**CHRISTOPHER & BERNADETTE EVANS ANTIQUES, Waynesboro, N.J.** — This small redware jug has a very unusual yet distinct decorative motif. Attributed to Galena, Ill., this design is sometimes referred to as the full moon. It measures 8 inches tall.



**STEVEN F. STILL ANTIQUES, Manheim, Penn.** — Great pair of painted iron gates.



**DENNIS & DAD ANTIQUES, Fitzwilliam, N.H.** — Mocha pepper pots (left), cat's-eye decoration and measuring 4-5/8 inches tall, and (right), brown and blue geometric impressed Wedgwood, 5 1/4 inches high.



**JASON SAMUEL FINE ART & ANTIQUES, Milford, N.H.** — Rare pair of Nantucket fire buckets, J. Coleman, Nantucket, Mass., 1821.



**GAIL & DON PIATT ANTIQUES, Contoocook, N.H.** — Black rag doll, early clothes, leather hands and good face.



## 19th Century Table Rug

Circa - mid to late 19th century  
Origin - New York state  
Description - This table rug is entirely hand made, inclusive of the background black fabric. The textile is comprised of both cotton and wool fabric. The decorative braiding around the edge of the entire rug, including the tassels, was most likely imported from Europe. The motif of flowers is done in a three dimensional stitching reminiscent of Waldoboro rugs. The floral pattern is very bold in color and most likely has not lost much of its intended powerful presentation. Condition - The only apologies I am aware of, is that there is some moth damage involving the background fabric. The appearance of this has been dramatically diminished by mounting it on black fabric. You now really need to search it out to see it. I must also mention that there is some fabric loss to one tassel and some fraying on each one. Measurements - 50" square mount - The mounting was done professionally, by Kathy & Ken Wilson.



**BARBARA ARDIZONE**

SALISBURY, CONNECTICUT 06068

(860) 435-3057

If you would like further information, please go to my web site, [www.barbaraardizone.com](http://www.barbaraardizone.com)





SPECIAL  
SHOW  
SECTION

THE 60TH ANNUAL  
New Hampshire Antiques Show



**Maine Folk Creel**

Maine Creel Carved & Paint Decorated Trout on Pine with Leather Wrapped Handle & Leather Hinges in the Shape of Fish. Signed #234 Jack Pelkey Feather on Base 11" H 15" W

**Maine Creel  
Maker's Sign**

Sign that Hung on the Workshop of Creel Maker & Folk Artist Jack D. Pelkey Carved & Painted Trout 12" H 51" W



**Jack D. Pelkey**

The last time we saw Jack Pelkey, he was unable to continue working due to his health. He contemplated selling us his sign that hung on his workshop as we all sat in his Medway, Maine home watching the Penobscot River behind his house. We have enjoyed it since. On September 8, 2005, Jack was laid to rest in East Millenocket, Maine, where he was born May 24, 1940.



**NEWSOM & BERDAN  
ANTIQUES & FOLK ART**

newsomberdan@aol.com

717-792-6744 Gallery 717-619-3166

Thomasville & Abbottstown, PA

www.newsomberdan.com





# THE 60TH ANNUAL New Hampshire Antiques Show

SPECIAL  
SHOW  
SECTION



A.E. RUNGE JR, ORIENTAL RUGS, Yarmouth, Maine — Persian Heriz Village rug, 6 feet 3 inches by 5 feet (scarce small squarish size Heriz), very fine condition, dating circa 1930 — \$4,250.



GARY F. YEATON ANTIQUES, Concord, N.H. — A nice assortment of decorative boxes and smalls will be offered.



NANCY & GENE PRATT, Victor, N.Y. — Pigeon candy container in excellent condition, German, dating circa 1900.



THOMAS M. THOMPSON, Pembroke, N.H. — A collection of hand carved wooden whimsies.



GARTHOEFFNER GALLERY, Lititz, Penn. — Early papier mache doll in original clothing, circa 1860.



*NEVERMORE*  
*Antiques*  
Sandra Cutchin

81 Littleworth Road  
Dover, N.H. 03820  
603-750-8025

Email: [nevermore2@comcast.net](mailto:nevermore2@comcast.net)

See you in N.H. at Booth 18





SPECIAL  
SHOW  
SECTION

THE 60TH ANNUAL  
**New Hampshire Antiques Show**

*Washington, Lincoln, Franklin, and Hamilton are coming to New Hampshire. Find them in booth 20.*



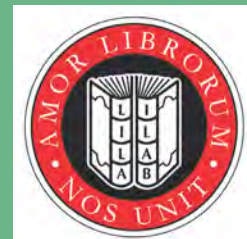
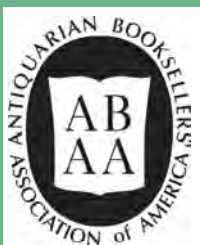
Washington at Dorchester Heights, Massachusetts. After Gilbert Stuart (1755-1828) and circa 1840. Oil on canvas. Cleaned and a tear has been repaired. Frame size, 24 ½" x 31.

**DeWolfe & Wood Rare Books**

P.O. Box 425  
Located on Rt. 202  
Alfred, ME 04002  
(207) 490-5572

[www.dwbooks.com](http://www.dwbooks.com)

*Find thousands of the finest rare books at [abaa.org](http://abaa.org)*





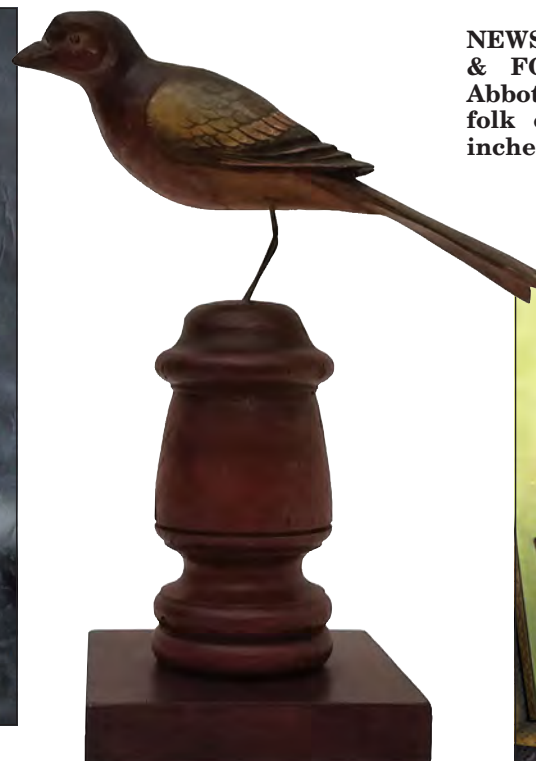
# THE 60TH ANNUAL New Hampshire Antiques Show

SPECIAL  
SHOW  
SECTION



SCOTT BASSOFF / SANDY JACOBS ANTIQUES, Swampscott, Mass. — Bold Georgian amethyst brooch.

JEF & TERRI STEINGREBE, New London, N.H. — A three-tier architectural wallbox in original paint.



NEWSOM & BERDAN ANTIQUES & FOLK ART, Thomasville & Abbottstown, Penn. — Colorful folk carved bird measuring 11 inches tall.



FRANK & BARBARA POL-LACK, American Antiques & Art, Highland Park, Ill., and Sunapee, N.H. — A portrait of a lady with red nails, a floppy hat and wearing a striped blouse, an oil on canvas signed on the reverse Mr Wessel, circa 1940. Herman Henry Wessel, 1878–1969, was a prominent artist and teacher from Cincinnati, Ohio. He studied with Frank Duveneck at the Cincinnati Art Academy and in Europe at the Royal Academy in Munich and at the Academies Julian and Colarossi in Paris. It measures 30 by 25 inches sight.



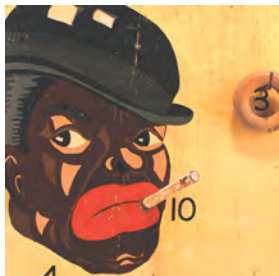
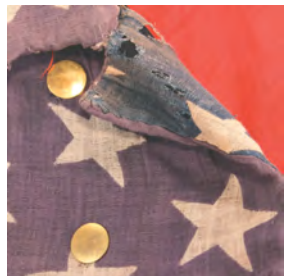
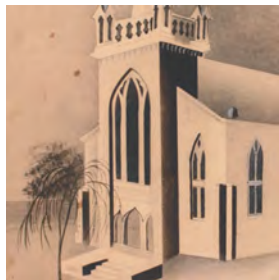
DENNIS & DAD ANTIQUES, Fitzwilliam, N.H. — Pair of blue and white Wedgwood "Marred" three-footed pierced bowls with shell edge borders, circa 1780, and measuring 8½ inches in diameter.



JOHN H. ROGERS ANTIQUES, LLC, Elkins, N.H. — Marked Lyman Fenton 1848.

## OLD AS ADAM.

*Adam Irish ~ Antiques & Americana*



Visit the shop at 33 Ceres Street in Portsmouth, New Hampshire

adam@oldasadam.com ~ Tel. 603-661-9373 ~ oldasadam.com



Booth #1

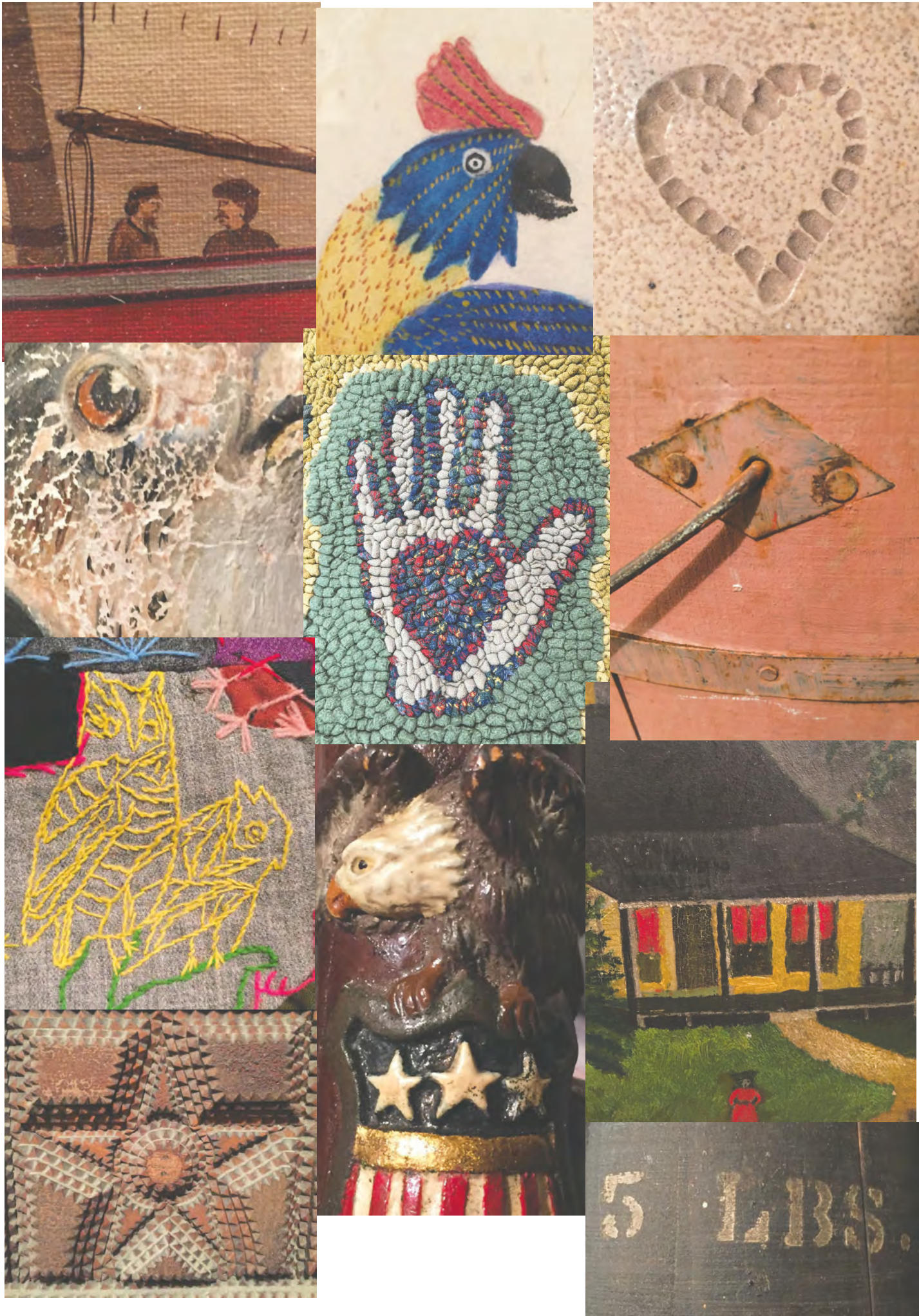




SPECIAL  
SHOW  
SECTION

THE 60TH ANNUAL  
New Hampshire Antiques Show

# Christopher and Bernadette Evans Antiques Folk Art and Country Americana



Booth 54; Downstairs, Center Aisle

[www.candbevansantiques.com](http://www.candbevansantiques.com)

[cevans62@yahoo.com](mailto:cevans62@yahoo.com)



# THE 60TH ANNUAL New Hampshire Antiques Show

SPECIAL  
SHOW  
SECTION



**JEWETT-BERDAN ANTIQUES**, Newcastle, Maine — Paint-decorated shoe shine box.

**NANCY & GENE PRATT**, Victor, N.Y. — Rare miniature copper gooseneck coffeepot with pierced heart handle, early Nineteenth Century.



**STEVEN-DOUGLAS ANTIQUES**, Rockingham, Vt. & Walpole, N.H. — Pink/black spatterware milk pitcher.

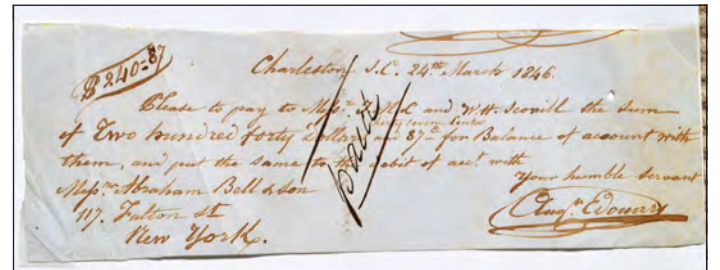
**M. FINKEL & DAUGHTER**, Philadelphia — Fine Salem, Mass., linsey-woolsey sampler with an excellent flowering border by Lydia Burrill, circa 1795. Lydia worked another sampler in Salem in 1789, which has been in two renowned collections, that of Theodore Kapnek and Joan Stephens. The sampler size is 19½ by 15 inches.



**KATE A. ALEX**, Warner, N.H. — Wall-mounted sculpture of a musical score, black enameled steel and polished brass, signed by Curtis Jere. It measures 19 inches tall and 41 inches long.




**NEWSOM & BERDAN ANTIQUES & FOLK ART**, Thomasville & Abbottstown, Penn. — Stern board found in Maine, *Interlude*, 30 inches long.



**RESSER-THORNER ANTIQUES**, Manchester, N.H. — Auguste Edouart handwritten check from Charleston, S.C., (1846) payable to T.M.L. and W.H. Scoville (brass and metal works which was later known to manufacture daguerreotype plates). It measures 3 by 8¼ inches.

## INTERLUDE

**Paul  
Sullivan  
ANTIQUES**

PO Box 3773  
Manchester, NH 03105  
603-669-8886

**THE QUEEN OF TRUMPS.**  
Hand colored engraving  
by C. Hunt after a painting  
by JF Herring.  
Published in London November 1835

SPECIAL  
SHOW  
SECTION

THE 60TH ANNUAL  
New Hampshire Antiques Show



**GARY F. YEATON ANTIQUES**  
18th & Early 19th Century American Furniture & Accessories

**IMPORTANT PORTSMOUTH, NEW HAMPSHIRE  
FEDERAL BOWFRONT CHEST – BRANDED “C BLUNT”**

The brand refers to the chest's one-time owner, Charles Blunt (1768-1823), who was a prominent ship's captain and shipowner living on Pleasant St. in Portsmouth. Refer to [Portsmouth Furniture](#) by Brock Jobe – Pg. 427



This chest is a fine example of a Portsmouth twelve-panel chest and was likely made by Judkins and Senter, Portsmouth cabinetmakers. The exuberant feathered birch panels are surrounded by cross-banded rosewood with a vertical line of light/dark inlay bisecting the center panels just below the ivory octagonal key eschutcheons. The case is birch and is in excellent condition with no repairs to the exceptional French feet.  
H. 38 in. W. 40 in. D. 17 in.

We carry a select inventory of investment quality New England antiques with a special interest in New Hampshire furniture.

**Offering Professional Conservation of Antique Furniture and Clocks**

**VISIT US AT THE SHOW! – BOOTH #61**  
Gallery located at 280 South St. Concord, NH 03301  
By appointment – (603) 228-4840  
[gfyeatonantiques@comcast.net](mailto:gfyeatonantiques@comcast.net)  
[www.GaryYeatonAntiques.com](http://www.GaryYeatonAntiques.com)





# THE 60TH ANNUAL New Hampshire Antiques Show

SPECIAL  
SHOW  
SECTION



**JEFF AND HOLLY NOORDSY**, Cornwall, Vt. — Pair of beaded Woodlands heart-shaped pincushions dating from the late Nineteenth Century.



**MARY & JOSHUA STEENBURGH**, Pike, N.H. — Stylish wooden horse toy found in a house in New Bedford, Mass.



**JEWETT-BERDAN ANTIQUES**, Newcastle, Maine — One-of-a-kind carved folk art sewing basket dating from the late Nineteenth Century.



**BOB JESSEN / JIM HOHNWALD ANTIQUES**, Fitzwilliam, N.H. — Bannister back armchair, early candlestand, painted candle box and powder horns, all in original paint and early surfaces.



**PETER SAWYER ANTIQUES**, Exeter, N.H. — Mirror clock attributed to John Taber, Berwick, Maine, in "as found" original condition.



**GARY F. YEATON ANTIQUES**, Concord, N.H. — An important Federal Portsmouth, N.H., dressing table with owner's brand, "T. S. Bowles, who was a compass maker working in Portsmouth 1805-1820.



## PEWTER & WOOD



29 Star Parade Flag  
1846-1847.  
Iowa statehood.  
Conserved in Period  
black painted frame.

**Barbara Boardman Johnson | 602 677 5686**  
**Enfield, NH | [www.pewterandwoodantiques.com](http://www.pewterandwoodantiques.com)**



SPECIAL  
SHOW  
SECTION

# THE 60TH ANNUAL New Hampshire Antiques Show

## Sharon Platt

### American Antiques

Period Decorative Arts for the Early American Home



Charming small early New England 19th c. watercolor of child with doll.  
In period gold leaf frame. Provenance: Joan L. Thayer



Iconic 18th c. wig stand, original green painted surface. Provenance: Lilian Cogan.  
18th c. wrought iron wig curlers; Rare 18th c. ceramic clay wig curlers.



Rare small hetchel with cover, dated 1821, signed D B.



Booth No. 36

[www.sharonplatt.com](http://www.sharonplatt.com)

sharon@sharonplatt.com • 603•430•7556 • PO Box 723, New Castle, NH 03854



# THE 60TH ANNUAL New Hampshire Antiques Show

SPECIAL  
SHOW  
SECTION



MISSOURI PLAIN FOLK, Sikeston, Mo. — Hand-made weathervane off the milk house of a New York dairy farm, 20 by 14 inches.



NEWSOM & BERDAN ANTIQUES & FOLK ART, Thomasville & Abbottstown, Penn. — Miniature Nineteenth Century walnut eight-pane Dutch cupboard measuring 26 inches tall.



RESSER-THORNER ANTIQUES, Manchester, N.H. — Nineteenth Century carved tobacco figure of a gypsy measuring 13 inches high.



ED WEISSMAN ART & ANTIQUES, Naples, Fla. — Dunlap one-drawer stand.



SCOTT BASSOFF / SANDY JACOBS ANTIQUES, Swampscott, Mass. — Georgian gold and coral day and night earrings.



STEVEN-DOUGLAS ANTIQUES, Rockingham, Vt. & Walpole, N.H. — Portsmouth, N.H.-area bannister back armchair in as descended state, mid-Eighteenth Century, with fishtail crest.



Come See Barnacle Bob  
& His Crusty Crustaceans  
**Booth #57 207-756-4290**  
Robert T. Foley Antiques, Gray, Maine



SPECIAL  
SHOW  
SECTION

THE 60TH ANNUAL  
**New Hampshire Antiques Show**

**CHARLES EDWIN LEWIS GREEN (1844 – 1915)**



*Boston Common, Looking Toward Beacon Street, n.d.*

Oil on canvas

14 x 18 inches

Signed at lower right: *C. E. L. Green*

Titled on stretcher bar verso: *Boston Common looking toward Beacon Street*

Period frame

**BROCK & CO.**

WORKS OF THE 19TH, 20TH AND 21ST CENTURIES

23 Bradford Street  
Concord, Massachusetts 01742  
(978) 369-1358  
brockcompany@gmail.com

**BROCKANDCO.COM**

by appointment



BOOTH #19



# THE 60TH ANNUAL New Hampshire Antiques Show

SPECIAL  
SHOW  
SECTION



**CHRISTOPHER & BERNADETTE EVANS ANTIQUES**, Waynesboro, N.J. — A colorful and graphic double-sided gameboard featuring vintage cars. It measures 20 by 19½ inches.



**JEWETT-BERDAN ANTIQUES**, Newcastle, Maine — Late Nineteenth Century African American doll in the original clothes.



**NATHAN LIVERANT AND SON, LLC**, Colchester, Conn. — Ship weathervane by Frank Adams (1873-1944) of Martha's Vineyard, Mass., 1920-40, in "as found" untouched condition.



**NANCY & GENE PRATT**, Victor, N.Y. — Carved and painted wedding couple in clothes of the period, 5 inches high and dating circa 1900.

**OLDE HOPE ANTIQUES**, New Hope, Penn. — Portrait of Theodore Talbot on a striped carpet, artist unknown, New York State, circa 1839. It measures 8½ by 6½ inches sight; in a period grain-painted frame, it measures 11½ by 9½ inches.



**JEFF AND HOLLY NOORDSY**, Cornwall, Vt. — Colorful stack of marked pantry boxes.

## AMERICAN GILT FRAMES

*Need good 1800's frames?*

Call me.

I'll bring what you want.

Large inventory.

**John D. Gould**

P.O. Box 251

Yorktown Heights, NY 10598

914-245-2481

[www.johngouldantiques.com](http://www.johngouldantiques.com)





SPECIAL  
SHOW  
SECTION

THE 60TH ANNUAL  
New Hampshire Antiques Show

# *John Chaski Antiques*

American Material Culture



## **Conrad Woerner's Trade Sign, circa 1870**

A classic piece of American Folk Art in undisturbed original condition, 10" x 32".

11 North Main Street  
Camden, DE 19934  
302-448-6492  
john@johnchaski.com  
[www.johnchaski.com](http://www.johnchaski.com)





# THE 60TH ANNUAL New Hampshire Antiques Show

SPECIAL  
SHOW  
SECTION



CHERRY GALLERY, Damariscotta, Maine — Pair of leaping trout carvings by James Joseph "Joe" Ahearn.

AXTELL ANTIQUES, Deposit, N.Y. — A highly carved and detailed vegetable gourd bowl depicting an American eagle, animals and people. It measures 8 inches deep, 8 inches in diameter, and dates circa 1920.



JEF & TERRI STEINGREBE, New London, N.H. — A grouping of smalls.



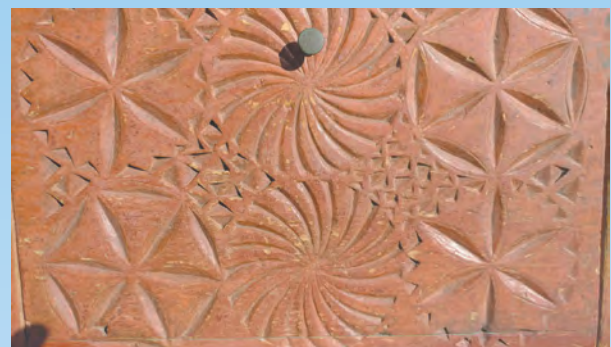
MISSOURI PLAIN FOLK, Sikeston, Mo. — Cat needlework picture in the original ogee frame. It measures 17 3/4 by 15 1/2 inches.



SCOTT BASSOFF / SANDY JACOBS ANTIQUES, Swampscott, Mass. — American beadwork frame dated 1869 with eagles and deer.



JOHN CHASKI ANTIQUES, Camden, Del. — Mallard duck decoy, Midwest, circa 1920, 14 inches long.



1770-1790 American child size slant front desk, original surface, probably CT, possibly Maine.



## IAN MCKELVEY

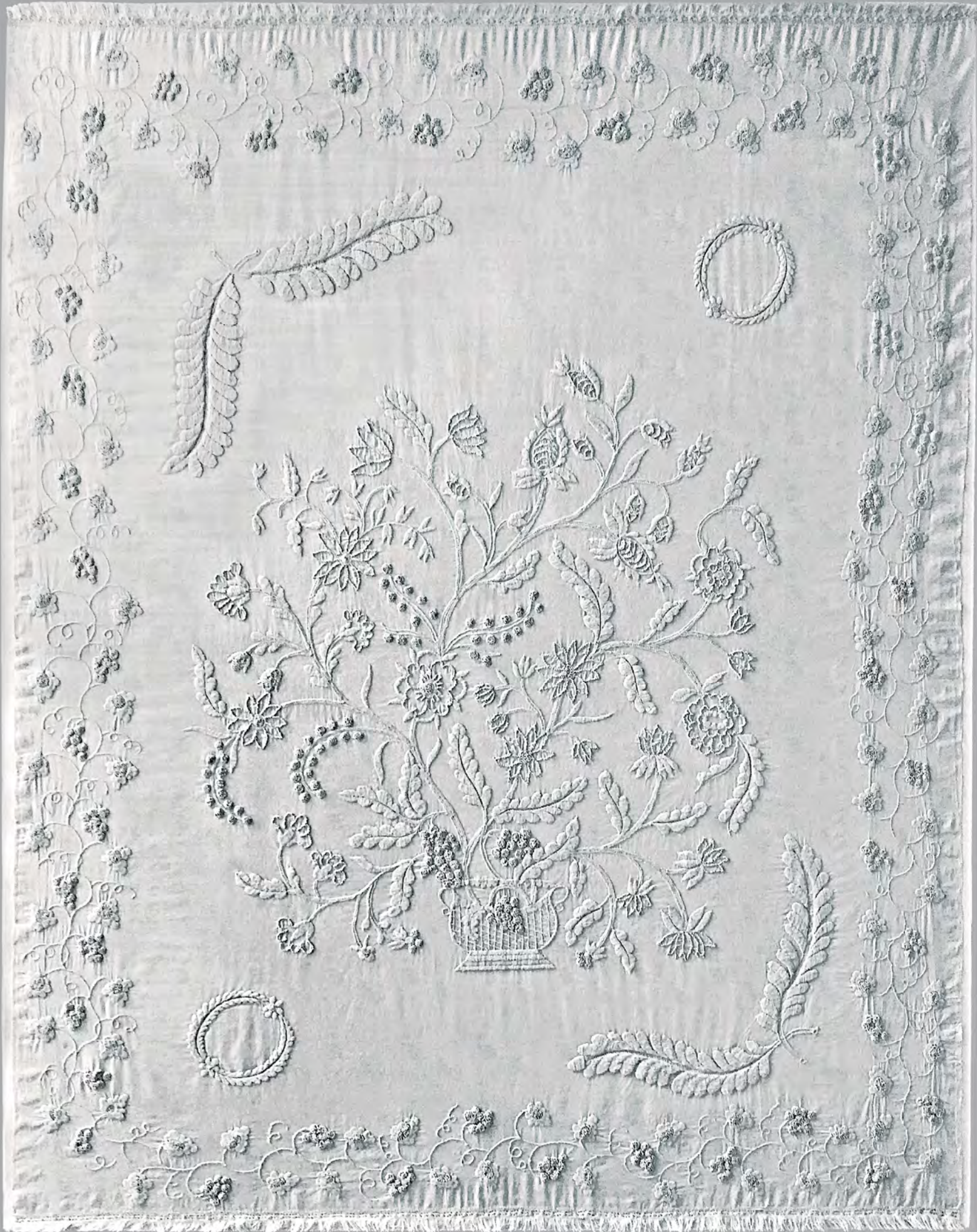
860-208-7809 ~ [ianmc1@charter.net](mailto:ianmc1@charter.net)



SPECIAL  
SHOW  
SECTION

THE 60TH ANNUAL  
New Hampshire Antiques Show

# Nancy Fishelson



36"W x 45"H

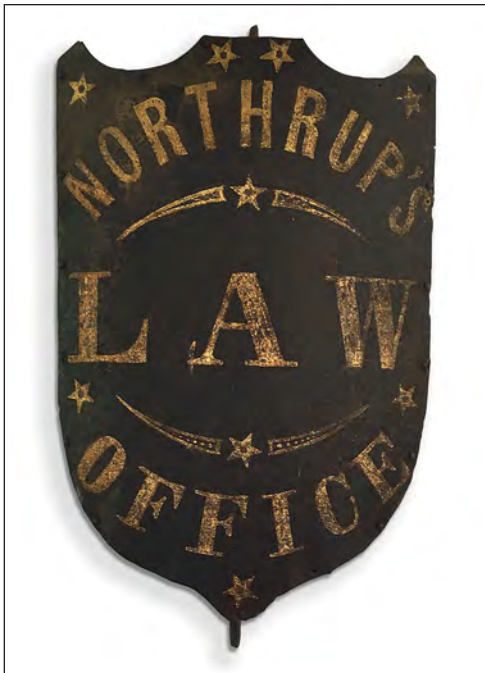
*Highly Detailed Whitework  
Mid-19<sup>th</sup> Century*

Orchard Park, NY ■ (310) 508-1446 ■ [nancyfishelson.com](http://nancyfishelson.com)



# THE 60TH ANNUAL New Hampshire Antiques Show

SPECIAL  
SHOW  
SECTION



**NANCY FISHELSON**, Orchard Park, N.Y. — Nineteenth Century shield trade sign found in Massachusetts, measuring 14 inches wide and 19½ inches high.



**STEVEN-DOUGLAS ANTIQUES**, Rockingham, Vt. & Walpole, N.H. — Dynamic late Nineteenth Century pine gameboard in yellow, black and red, and measuring 15½ by 25 inches.



**PETER SAWYER ANTIQUES**, Exeter, N.H. — “Mount Washington from Walker’s Pond,” Conway, N.H., by Frank Shapleigh.



**RESSER-THORNER ANTIQUES**, Manchester, N.H. — Nineteenth Century Jack Tar cast iron cane/umbrella stand in the original grey monotone surface and measuring 27 inches high.



**SCOTT BASSOFF / SANDY JACOBS ANTIQUES**, Swampscott, Mass. — Carved and painted wood bust of a woman.



**M. FINKEL & DAUGHTER**, Philadelphia — Baltimore sampler featuring a house and lawn scene by Jane Robinson, dated 1818, from a group known as “Diagonal Path Group.” This is the earliest known sampler from this group. Sampler size: 16¾ by 17 inches.



[WWW.AMERICANGARAGEANTIQUES.COM](http://WWW.AMERICANGARAGEANTIQUES.COM)



EXHIBITING AT THE 60<sup>TH</sup> ANNUAL NEW HAMPSHIRE ANTIQUES SHOW AUGUST 10-12 2017

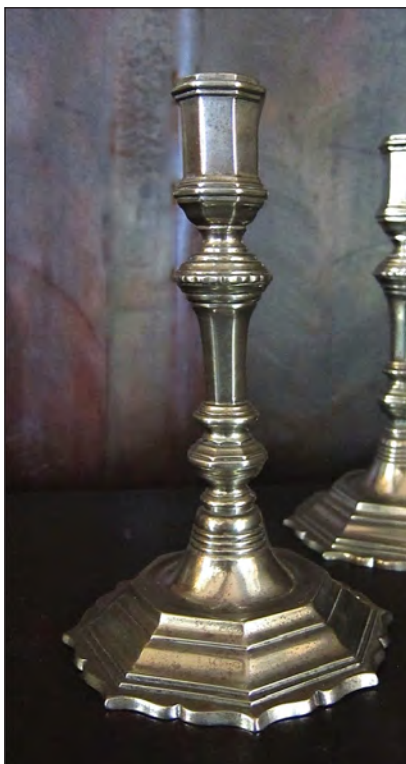


SPECIAL  
SHOW  
SECTION

# THE 60TH ANNUAL New Hampshire Antiques Show



JOHN GOULD, Yorktown Heights, N.Y. — Examples of 1820s cove and sully frames from a stock of more than 100 pieces.



PAUL J. DeCOSTE, West Newbury, Mass. — A Paktong pair of French sticks.



THOMAS M. THOMPSON, Pembroke, N.H. — A set of Nineteenth Century lithographed paper on wood alphabet blocks by Whitney Reed, Leominster, Mass.



STEVEN F. STILL ANTIQUES, Manheim, Penn. — Papier mache stork in the shoe candy container.



ED WEISSMAN ART & ANTIQUES, Naples, Fla. — Painting by W.P. Stubbs of the schooner Annin C. Grace.

## Bob Jessen and Jim Hohnwald Antiques



*IMPORTANT Early Hotel Sign...*

*...from Upstate New York*

*In original paint.*

*Ca. 1820 - 1830's*

*63" tall x 40" wide*

*Booth 27*

*Our 20th year*

603-585-9188  
a call ahead suggested

**BOB JESSEN • JIM HOHNWALD**

*American Country Furniture, Accessories and Folk Art  
... with special emphasis on form and surface*

Fitzwilliam, NH 03447  
1 mile from the common

whohnw@gmail.com



# THE 60TH ANNUAL New Hampshire Antiques Show

SPECIAL  
SHOW  
SECTION



Bill Lewan — 1998



Mary Benisek and Don Walters — 1998



William Lary — Undated



Linda DeCoste — 1998

## FACES Present & Past



John Rogers, left, with Dan Hingston — 2014



Butch Berdan, with his mother, Betty Berdan — 1998



Betty Barenholtz — 1989



Kate Alex — 2014



Jim Milne, providing a closer look for a visitor, with wife Judy, at left, also taking a look. — 2006



Among the show visitors in 2004 were Nan Gurley, dealer and show manager, and Dick Withington, well-known auctioneer. — 2004



Russell Carrell, at center, with Bert Savage, left, and Steven Rowe — Undated



Russ and Karen Goldberger — 2001



Laura Beach, editor of *Antiques and The Arts Weekly*, sharing time with Howard Oedel. — 2006



Paula Tate-Moreau and Michael Sczerzen — 2002



Linda Tate, with two of her best friends, at the time she was president of the association. — 1998



Melissa Alden — 2004



SPECIAL  
SHOW  
SECTION

# THE 60TH ANNUAL New Hampshire Antiques Show



Tommy Thompson — 2006



Hours before the show opens on day one, people line up and settle in, as best they can, to pass time away.



Ted Hayward — 2005



Michael Sczerzen — 2016



Corey Daniels — 2002



Jef Steingrebe — Undated



Priscilla Hutchinson — 1995



Bob Withington — 2010



Paul and Margaret Weld — Undated



Ed Weissman — 2007



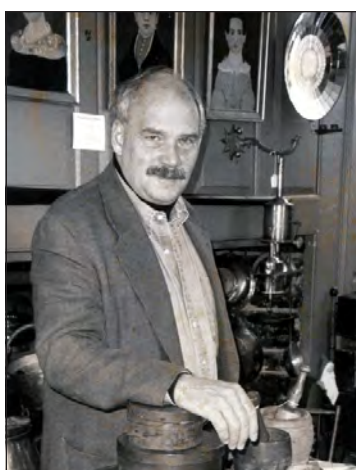
Jay and Meryl Weiss — Undated



Bob Jessen, standing, and Jim Hohnwald — 1998



Pam Boynton — 2005



Wayne Pratt — Undated



Barbara Ardizone with Lester — 1998



Stephen Corrigan, left, and Douglas Jackman — 1998



Jeanne Dobbs — Undated



Margaret Weissman — 2006



Dave and Connie Greer — 1998



Don and Gail Piatt — 2001



Ted and Carole Hayward — 1998



Scott Bassett — 2010

## FACES Present & Past



# THE 60TH ANNUAL New Hampshire Antiques Show

SPECIAL  
SHOW  
SECTION



Late 19th C colorful 30 pc German Village



Late 19th C German, felt covered wood, cow and calf pull toy



Rare, late 19th C American toy fort by Bliss Co.



FRANK & BARBARA POLLACK, American Antiques & Art, Highland Park, Ill., and Sunapee, N.H. — A portrait of a lady seated on a red sofa wearing a green dress and an elaborate bonnet. This beautiful portrait of a lovely young woman is in wonderful, original untouched condition and in what is probably the original gilt frame. It measures 29½ by 24¼ inches sight, 34¾ by 30 inches framed.



OLDE HOPE ANTIQUES, New Hope, Penn. — Game table, New England, circa 1820, measuring 27½ inches high, 18¼ inches wide and 20½ inches deep.



M. FINKEL & DAUGHTER, Philadelphia — Large and outstanding Western Pennsylvania sampler featuring flowering and fruited trees and an array of birds all worked in a rich palette by Margaret Jane Arbuckle at the highly acclaimed Mary Tidball School, Allegheny County, dated 1847; sampler size is 25 by 33 inches.



PETER SAWYER ANTIQUES, Exeter, N.H. — A fine mahogany candlestand from North Shore, Massachusetts.

JEFF AND HOLLY NOORDSY, Cornwall, Vt. — Handsome 1-gallon (unmarked) Sidney Risley jug dated 1847.



## KEN & ROBIN PIKE



43 Ayer Road  
Nashua, NH 03064

603-882-3367 rrpcc101a@comcast.net





SPECIAL  
SHOW  
SECTION

# THE 60TH ANNUAL New Hampshire Antiques Show



IAN McKELVEY, South Windham, Conn. — This circa 1900 Radio sign with great graphics, double-sided, was found in New England and it retains its original condition.



NANCY & GENE PRATT, Victor, N.Y. — Miniature decorated sled in excellent original condition from the late Nineteenth Century.



THOMAS M. THOMPSON, Pembroke, N.H. — A Nineteenth Century New Hampshire road sign that measures 36½ by 11 inches.



STELLA RUBIN, Darnestown, Md. — Rooster hooked rug of Pennsylvania origin, circa 1930, measuring 22 by 39 inches.



CHRISTOPHER & BERNADETTE EVANS ANTIQUES, Waynesboro, N.J. — An early Twentieth Century hooked rug of a cat laying on a color rug. It has been professionally mounted for hanging and it measures 33 by 22½ inches.

## AS I FOUND IT (SEE IT AT NH ANTIQUES SHOW)



REPAIRS • HANDWASHING • RESTORATIONS

SPECIALIZING IN SMALLER PERSIAN AND CAUCASIAN VILLAGE RUGS AND CARPETS

### HANDWOVEN IRISH DONEGAL

ARTS N CRAFTS CARPET  
11' 7" x 9' 0"

Purchased by family circa 1900

## A E Runge, Jr Oriental Rugs

[www.rungerugs.com](http://www.rungerugs.com)

All rugs guaranteed

A.E.RUNGE, JR. - YARMOUTH, MAINE  
207-846-9000 - [INFO@RUNGERUGS.COM](mailto:INFO@RUNGERUGS.COM)  
- A FAMILY TRADITION SINCE 1880

### Exhibiting at:

New Hampshire Antiques Show  
- August 10-12

Ellsworth Antiques Show  
at Woodlawn, Ellsworth, ME  
- August 17-19



RUGS SENT ON APPROVAL



# THE 60TH ANNUAL New Hampshire Antiques Show

SPECIAL  
SHOW  
SECTION



**CHRISTOPHER & BERADETTE EVANS ANTIQUES**, Waynesboro, N.J. — Late Nineteenth Century pilot house eagle in the best worn surface and the old iron support bracket is a later addition. It is mounted on a museum stand and measures about 22 inches long.



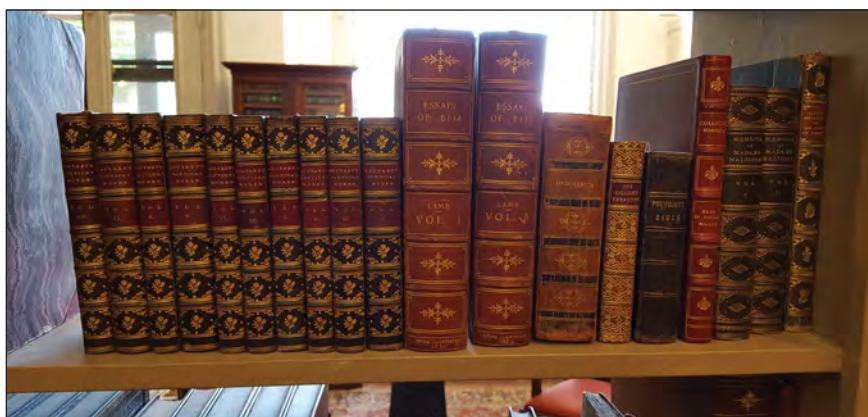
**JUDITH & JAMES MILNE**, Kingston, N.Y. — Tufted wool theorem.



**JEFF AND HOLLY NOORDSY**, Cornwall, Vt. — Early Nineteenth Century hog scraper paired with a multisided blown glass peg lamp.



**JOHN H. ROGERS ANTIQUES, LLC**, Elkins, N.H. — Covered ash burl sugar bowl.



**DeWOLFE & WOOD RARE BOOKS**, Alfred, Maine — Part of a collection of attractive leather bound books.

**BILL KELLY**, Limington, Maine — Diminutive New Hampshire blanket chest in untouched original condition and red paint. It is inscribed inside the till "Marlborough New Hampshire 1832" and measures 38½ inches wide, 14¾ inches deep and dates circa 1800.



## Sail into the 60<sup>th</sup> NHADA Show!



**Melissa Alden**

PO Box 998 Portsmouth, NH 03802

Email: [mscarter@rcn.com](mailto:mscarter@rcn.com)

Tel: 603.501.9911



SPECIAL  
SHOW  
SECTION

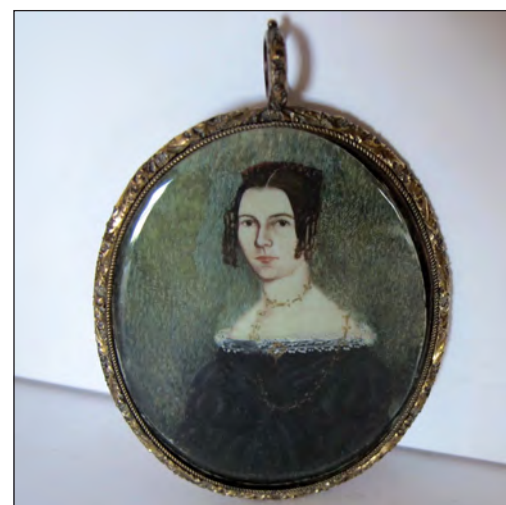
# THE 60TH ANNUAL New Hampshire Antiques Show



PAUL J. DeCOSTE, West Newbury, Mass. — Patriotic cast iron eagle.



NEWSOM & BERDAN ANTIQUES & FOLK ART, Thomasville & Abbottstown, Penn. — Early New Hampshire gameboard in salmon, red, black and green paint dating from the Nineteenth Century.



SCOTT BASSOFF / SANDY JACOBS ANTIQUES, Swampscott, Mass. — Lovely Massachusetts miniature portrait of a young woman with elongated swan neck wearing a gold chain, circa 1830s.



JEWETT-BERDAN ANTIQUES, New-castle, Maine — Tin painted pumpkin lantern with all of its original parts and paint.



STEVEN-DOUGLAS ANTIQUES, Rockingham, Vt. & Walpole, N.H. — Early Twentieth Century lifesize wooden carved black man's head.



THE NORWOODS' SPIRIT OF AMERICA, Timonium, Md. — Exceptional carved and painted lion figure with excellent form, features and coloration.



## Happy 60<sup>th</sup> Anniversary



19th C Tin Anniversary Top Hat

### *Come And Celebrate With Us!*

Nancy & Gene Pratt  
Victor, New York  
585.330.7203



## Sixty Years And Counting—

# *From The Highway Hotel To Magic In Manchester*

BY LAURA BEACH

MANCHESTER, N.H. — As counterintuitive as it may seem, the development of the antiques business in New England is inextricably connected to the rise of the automobile. Books like Virginia Robie's *The Quest of The Quaint* of 1916 were essentially touring guides, helping city folks plan their country weekends. Henry Ford is known, fittingly, for cars and antiques, and the enduringly successful New Hampshire Antiques Show got its start in a roadside motel just off Interstate 93 in Concord, N.H.

Before the New Hampshire Highway Hotel, erected in 1951, was associated with antiques, it was famous for primary-season politics. The Kennedys, Nixon, Reagan, McGovern, Ford and Mondale visited, their entourages in tow and the press corps in hot pursuit.

"In its rooms men have struck political deals that affected the whole nation. If there is a ghost of the Highway Hotel, what tales it could tell," Jon Margolis wrote in the *Chicago Tribune* in 1988, the year the motel was demolished to make way for a shopping center. Cataloging its dubious attributes, Margolis observed, "It has hundreds of rooms, none of them very big or well appointed, and many of them with doors opening to the outside. If only all the doors were well fitted, this would be a convenience. That some are not is a problem, especially on a cold winter night when the wind comes whistling past the weatherstripping."

If anything, the shabby setting enhanced the glamour of the place. "At night at the Highway Hotel, a burning candle on a candlestand and a lighted cigarette seemed the height of sophistication,"

Tommy Thompson, president of the New Hampshire Antiques Dealers Association, says, recalling the ad hoc arrangements of antiques and people that characterized the show's early days.

As described by Marlborough, N.H., dealer Tom Longacre, the New Hampshire Antiques Show debuted with 15 exhibitors, among them Mal and Sarah French, who ran French's Antiques Show, also at the Highway Hotel; Dick and Bob Wiggins of Sanbornton, N.H.; and Howard and Caroline Oedel of East Hebron, N.H. Howard Oedel, who exhibited for 50 years and is scheduled to cut the ribbon for the opening of the 2017 show, recalls the booth rent being \$40. He took a page advertisement in this publication in 2007 to honor legendary New Hampshire show exhibitors of yore, among them "Pop" Way and his brother, Ken; Ed and Celeste Koster; Paul and Margaret Weld; Sandy and Marjorie Dow; Jim and Audrey Conniff; and Lee and Bob Burgess.

A former New Hampshire Antiques Show dealer himself, *Antiques and The Arts Weekly* contributor Rick Russack recently unearthed details on the Heritage Forum, a Highway Hotel gathering organized by Grace Casey, who in 1963 advertised Nina Fletcher Little, James Biddle and Katharine Prentis Murphy as presenters for the event sponsored by the New Hampshire Antiques Dealers Association (NHADA), the New Hampshire Historical Society, Currier Museum and Strawberry Banke.

A New Hampshire Antiques Show exhibitor for more than a decade, Illinois dealer Barbara Pollack began attending the fair around the time she and her late husband, Frank, started summering in Sunapee, N.H., 44 years ago. "The dealers were great and the show wonderful. The line snaked around forever to get inside. Once, a fist fight broke out when an elderly couple, attempting to get out of the sun, cut into line." Pollack is bringing to the 2017 show the most important New Hampshire watercolor she has ever owned, a schoolgirl drawing by Hannah P. Badger depicting the interior of the Atkinson Academy around 1812.

How the New Hampshire Antiques Show became a national treasure has much to do with the formidable Russell Carrell, recruited as manager not long after the fair began. Carrell, an antiques dealer who developed a circuit of shows after settling in Salisbury, Conn., in 1946, added nationally prominent exhibitors, among them Betty Sterling, Nimmo and Hart, Gene King, Hillary Underwood and Harry Hartman, all of whom spent heavily on the floor and brought with them an elite clientele.

"In 1972, my first year, I shared a booth



New Hampshire Highway Hotel Concord

# MG

## Art & Antiques

Merrimac, MA

603 642-8948

mgartandantiques@gmail.com

C. 1780 English Oak Wallbox  
16th or early 17th Wrought Pricket





SPECIAL  
SHOW  
SECTION

# THE 60TH ANNUAL New Hampshire Antiques Show



with Priscilla Ham. Pam Boynton set up with Bill Samaha and Ed and Mary Lou Jackson,” says Steve Corrigan of Stephen-Douglas Antiques. “Russell worked his magic. It was a three-day show at the Highway Hotel, Thursday to Saturday. Back then, Saturday was the big day as customers stopped on their way to the White Mountains for the weekend.”

Carrell made a big impression on Maine dealer Charles “Butch” Berdan, who first visited the show at the Highway Hotel around 1970 as a child. “That man is wearing pink pants and no socks!” Butch exclaimed about Carrell to his mortified mother, antiques dealer Betty Berdan. In line ahead of the Berdans were their fellow Maine dealers Nan and David Gurley. For this year’s show, Butch and his partner, Tom Jewett, are bringing a recently rediscovered paint-decorated child’s desk-on-frame, signed “Morrison Atwood, Hampstead, N.H. July 1840.”

“We knew when we bought it we were saving it for New Hampshire,” Butch says of the desk.

“I started at the Highway Hotel in 1983. I was wet behind the ears and nervous. Right away Estelle Glavey bought two major pieces of furniture from me. I had to go home to restock. We’d sell out our stands in those days,” says Con-toocook, N.H., dealer Gail Piatt, who chaired the 50th anniversary show in 2007.

“It took me three years to get in,” remembers

Tom Longacre, a folk art and painted furniture specialist exhibiting for his 40th year with his wife, Beverly Weir Longacre, an expert in Christmas antiques and the show’s co-chair. Tom cherishes the committee’s June 1976 letter to him, signed by then exhibitor Ron Bourgeault, and informing Longacre that his application was under review. As Bourgeault explained, the committee sought quality, diversity of merchandise and prices, and a balance between in-state and out-of-state dealers. Consideration was given to a dealer’s contributions to the NHADA organization, as well as to his ability to get along with colleagues.

The New Hampshire Antiques Show moved to what is now the Radisson Hotel Manchester in 1985. In 1989, NHADA took over the fair’s management, parceling out responsibilities to its hardworking members.

“We all held our breath — not much was going on in Manchester at the time — but the move worked out fine. We brought our merchandise and our collectors with us,” says Steve Corrigan.

The New Hampshire Antiques Show retains its hospitable mien. As Hercules Pappachristos notes, “I was nervous the first year I exhibited in 2006, but found my colleagues friendly and welcoming. The New Hampshire dealers are really a family.” The Derry, N.H., resident is this year featuring paintings by the Nineteenth Century Wakefield,

Mass., artist Franklin Poole. One depicts Grafton Center, N.H., while others show the White Mountains.

“I started going to the show nearly 48 years ago at the Highway Hotel. It was the best of the New Hampshire dealers and a lot of selling went on beforehand. These days, the show is fresh when the doors open. You can’t even have a dealer friend help you set up if he or she isn’t in the show,” says Dennis Berard of Fitzwilliam’s Dennis and Dad Antiques.

“Most of us spend a lot of time rustling up great stuff,” adds Steve Corrigan. Stephen-Douglas Antiques will unveil a pair of large, early Nineteenth Century portraits, high style but not academic, in extraordinary red and gold paint-decorated frames, plus Mocha pottery and irresistible smalls.

“I hope the New Hampshire Antiques Show continues for another 60 years,” says Butch Berdan, who, like us all, is looking to August and well beyond.

The New Hampshire Antiques Show returns to the Radisson Hotel Manchester August 10–12. Show hours are Thursday, August 10, and Friday, August 11, from 10 am to 7 pm; and Saturday, August 12, 10 am to 4 pm. Admission is \$15 on Thursday, \$10 on Friday and Saturday. Visitors under 30 (with proper ID) are admitted free.

For additional information, [www.nhada.org](http://www.nhada.org).

## Set Your Sails For

The 60th Annual New Hampshire Antiques Show



**BRIAN J. FERGUSON ANTIQUES**

One Main Street, Swansea, MA 02777 | 508-674-9186 | [bfergusonswansea@gmail.com](mailto:bfergusonswansea@gmail.com)



# THE 60TH ANNUAL New Hampshire Antiques Show

SPECIAL  
SHOW  
SECTION



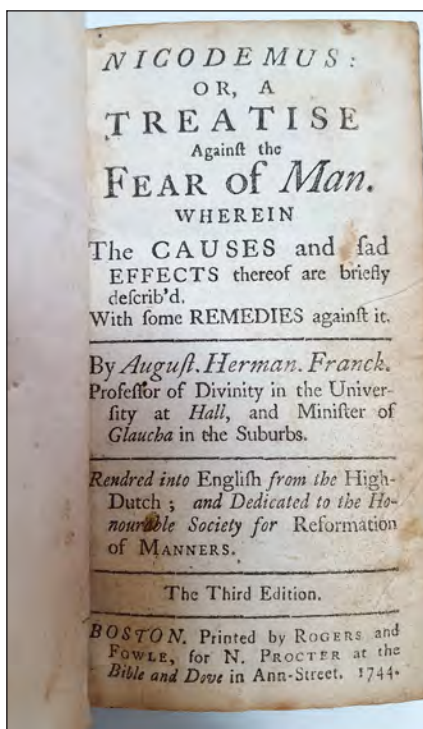
**NATHAN LIVERANT AND SON, LLC**, Colchester, Conn. — Memorial for Reverend Enoch Pond (1756–1807) of Ashford, Conn. It is an oil on paper mounted on board.



**JOHN GOULD**, Yorktown Heights, N.Y. — This signed and dated one-drawer decorated chest measures 15 inches wide, 10 inches deep and 6-1/8 inches high.



**RESSER-THORNER ANTIQUES**, Manchester, N.H. — Rufus Porter family record for the McKinstry and Tenney family of Newbury, Mass., in Porter frame. See *Lipman, Rufus Porter Yankee Pioneer*, figure 41.



**DeWOLFE & WOOD RARE BOOKS**, Alfred, Maine — A 1744 Boston imprint.



**BILL KELLY**, Limington, Maine — Apple green trencher in excellent condition, Maine, circa 1850, 20 inches long.



**THOMAS M. THOMPSON**, Pembroke, N.H. — Unusual Abercrombie & Fitch leather lion measuring 32 inches long and 21 inches high.



*Antique Quilts and  
Fine Design Jewelry*

**Darnestown, MD**

(outside Washington, DC)

**301-948-4187**

[stellarubin@verizon.net](mailto:stellarubin@verizon.net)

[www.stellarubin.com](http://www.stellarubin.com)



Mennonite Princess Feather quilt  
from Lancaster County, Pennsylvania  
Circa 1880



SPECIAL  
SHOW  
SECTION

# THE 60TH ANNUAL New Hampshire Antiques Show



**M. FINKEL & DAUGHTER, Philadelphia** — Excellent Philadelphia sampler with original ribbon and strong Quaker influence by Anna Clymer, dated 1817. The sampler is accompanied by a highly interesting and extensive file of genealogical information. The sampler measures 22 by 21½ inches.

**IAN McKELVEY, South Windham, Conn.** — Patriotic tramp art mirror, circa 1870–1900.



**STELLA RUBIN, Darnestown, Md.** — Armadillo necklace, silver with overlapping discs strung on velvet, made circa 1960 by master Taxco, Mexico, designer Hector Aguilar.



**OLDE HOPE ANTIQUES, New Hope, Penn.** — Dome-top box lined with Rhode Island paper dated 1827, measuring 11¼ inches high, 24 inches wide and 11¼ inches deep.



**JEFF AND HOLLY NOORDSY, Cornwall, Vt.** — English blown glass cann with 1859 coin in stem and ruby red threading.

**JOHN HALEY BELLAMY**  
1836-1914, 25" LONG



## TUCKER FREY ANTIQUES

289 MAIN STREET SOUTH • WOODBURY, CT 06798  
(203) 263-5404 • TFREY90549@AOL.COM



**BOTH IN ORIGINAL PAINT**

**GEORGE STAFF**  
1862-1958, 31" LONG



# THE 60TH ANNUAL New Hampshire Antiques Show

SPECIAL  
SHOW  
SECTION



**CHRISTOPHER & BERNADETTE EVANS ANTIQUES**, Waynesboro, N.J. — A 6-gallon jar is an impressive 15 inches tall and features a slip-trailed flower compote and a background of a house with a fence and trees. It is incised on the base "Bennington."



**PEWTER & WOOD ANTIQUES**, Enfield, N.H. — Black rag doll dating from the early 1900s, very long limbed and measuring 21¼ inches long by 5 inches wide at the shoulders.

**JUDITH & JAMES MILNE**, Kingston, N.Y. — Rooster weathervane.



**OLDE HOPE ANTIQUES**, New Hope, Penn. — Uncle Sam mailbox holder, signed Oscar James Bishop, Nashville, Wis., circa 1920-40. It measures 56½ inches high, overall on base, 75 inches.



**DENNIS & DAD ANTIQUES**, Fitzwilliam, N.H. — Pink luster puzzle jug, 8¼ inches tall, dating from the early Nineteenth Century.



**PAUL J. DeCOSTE**, West Newbury, Mass. — Bianco Sopra Bianco plates.

## FRED GIAMPIETRO

1064 Chapel St.  
New Haven, CT 06510  
203.777.7760

Gallery Hours  
M 11-5 Tue - Sa 11-6  
August - open by appointment

FOLK ART  
AMERICANA  
MODERN



Pair of Oversized Swan Decoys, c.1930, 33" L

[WWW.FREDGIAMPIETRO.COM](http://WWW.FREDGIAMPIETRO.COM)





SPECIAL  
SHOW  
SECTION

# THE 60TH ANNUAL New Hampshire Antiques Show

**KATE A. ALEX, Warner, N.H.** — A large, vibrant reverse painting on glass of an urn filled with flowers paired with two small vases on a stand, in a newer gilt frame. It measures 43 by 26 inches.



**M. FINKEL & DAUGHTER, Philadelphia** — Maryland sampler with a strong house and lawn scene and a variety of Quaker elements, by Catherine Elizabeth Gray, circa 1835, Charles County. Catherine worked another sampler that is in the collection of the Charles County Historical Society. Sampler size is 21 by 17½ inches.



**THE NORWOODS' SPIRIT OF AMERICA, Timonium, Md.** — Marvelous well-fashioned Punch and Judy "Preacher Man" figure with finely painted wooden face.

**NEWSOM & BERDAN ANTIQUES & FOLK ART, Thomasville & Abbottstown, Penn.** — An early Nineteenth Century mug, "A Present From Boston."



**JOHN H. ROGERS ANTIQUES, LLC, Elkins, N.H.** — Nineteenth Century American letters and numbers box.



Watercolor of 3 masted schooner in gilt frame, ca 1880, 14" x 20" sight

## Withington & Company ANTIQUES

207 Market Street  
Portsmouth, NH 03801  
603-498-4778



Folky concrete cat, mid-20th C, 6" x 10" x 6"



Clockwork Dolphin toy in original box from Au Nain Bleu, Paris, ca 1910, 5" x 13" x 4"



Early 19th C painted stool with fringe and caterpillar shirred top 8" x 14" x 8"



# THE 60TH ANNUAL New Hampshire Antiques Show

SPECIAL  
SHOW  
SECTION

**OLDE HOPE ANTIQUES, New Hope, Penn. — Footstool with Pennsylvania motifs, Schuylkill County, Penn., circa 1830. It measures 9½ inches high, 16½ inches wide and 9 inches deep.**



**IAN McKELVEY, South Windham, Conn. — Sheep weathervane, dating from the Nineteenth Century, retains the original surface and is in as found condition.**



**STELLA RUBIN, Darnestown, Md. — A sailboats quilt, circa 1920, 70 by 82 inches.**



**JASON SAMUEL FINE ART & ANTIQUES, Milford, N.H. — Richard La Barre Goodwin (1840–1910), “After the Hunt,” an oil on canvas measuring 40 by 28 inches.**



**JUDITH & JAMES MILNE, Kingston, N.Y. — Newspaper & Milk sign.**



**THE NORWOODS' SPIRIT OF AMERICA, Timonium, Md. — Well-rendered and graphically strong trade sign, with raised gold-gilded lettering.**

# Douglas R WYANT Antiques

920 E State Street,  
Cassopolis, MI 49031  
269-214-6354 Cell  
tywyant@yahoo.com





SPECIAL  
SHOW  
SECTION

THE 60TH ANNUAL  
New Hampshire Antiques Show



**JOHN GOULD**, Yorktown Heights, N.Y. — An 1820s untouched New Hampshire tavern table with the original peg construction, one-board top, good height and paint measures 25½ inches wide, 49 inches long, and 28¾ inches high.



**BILL KELLY**, Limington, Maine — Pair of oil on basswood panel portraits, likely Vermont, circa 1825, 19¾ by 25½ inches.



**M. FINKEL & DAUGHTER**, Philadelphia — Large, architectural pine mantel with stepped long-leaf pine shelf and excellent details columns, moldings and tombstone registers. The summer cover was made for it, but slightly later as the wood is different and has reeded framing with corner blocks around the panels. Both parts, however, are in the same early green paint. Very rare to find the mantel and summer cover still together. The mantel is 51 inches high by 70 inches wide, with a 81-inch-wide top, and the opening/summer cover is 31 inches high by 55¾ inches wide.



**BOB JESSEN / JIM HOHNWALD ANTIQUES**, Fitzwilliam, N.H. — Examples of early American treenware in original paint and surfaces.

Some Good  
**AMERICANA**



Paul J. DeCoste

West Newbury  
Massachusetts 01985  
978-363-1420



# THE 60TH ANNUAL New Hampshire Antiques Show

SPECIAL  
SHOW  
SECTION



Paul J. DeCoste, West Newbury, Mass. — 2007



Michael and Sally Whittemore, Washington, Ill. — 2007

## A Look At Shows Over Years Past



Peter H. Eaton, American Furniture, Newbury, Mass. — 2007



Stephen-Douglas, Rockingham, VT — 1998



Nathan Liverant & Son, Colchester, Conn. — 2007



Newsom & Berdan Antiques, Thomasville, Penn. — 2007



Howard Oedel, East Hebron, N.H. — 2007



The Yankee Smuggler, Richmond, N.H. — 1998



SPECIAL  
SHOW  
SECTION

# THE 60TH ANNUAL New Hampshire Antiques Show



Bob Jessen & Jim Hohnwald,  
Fitzwilliam, N.H. — 2007



Bob and Debbie Withington, York, Maine — 2007



Sharon Platt Antiques, Portsmouth, N.H. — 2007



Steven J. Rowe Antiques, Newton, N.H. — 1998



Nancy and Craig Cheney,  
Americana, Newark, Ohio  
— 2007

*A Look At Shows  
Over Years Past*



Wayne Pratt,  
Woodbury, Conn.  
— 1998



John Carl Thomas, Hanover, Conn. — 1998



Walters-Benisek Art & Antiques,  
Northampton, Mass. — 1998



Steven F. Still, Elizabethtown, Penn. — 2007



Bassoff-Jacobs Antiques, Rindge, N.H. — 1998



The Tates Antiques, Sanbornton, N.H. — 2007



Thomas R. Longacre, Marlborough, N.H. — 1998



# THE 60TH ANNUAL New Hampshire Antiques Show

SPECIAL  
SHOW  
SECTION

**SCOTT BASSOFF / SANDY JACOBS ANTIQUES, Swampscott, Mass. — Georgian sapphire and diamond ring.**



**JUDITH & JAMES MILNE, Kingston, N.Y. — Stove plate from Poughkeepsie, N.Y.**

**PAUL J. DeCOSTE, West Newbury, Mass. — Wheildon octagonal iridescent plate and tea caddy.**



**BILL KELLY, Limington, Maine — Watercolor portrait attributed to Emily Eastman, London, N.H., circa 1835 and measuring 15 by 18 inches.**

**BOB JESSEN / JIM HOHNWALD ANTIQUES, Fitzwilliam, N.H. — Examples of early American treenware in original paint and surfaces.**



**THE NORWOODS' SPIRIT OF AMERICA, Timonium, Md. — Wondrous early crewelwork-covered ribbon box. (Pictured is the lid. Crewelwork is also on all four sides).**



Pair of Chinese export porcelain armorial covered serving dishes from the Thomas ap Catesby Jones and Mary Walker Jones service, Virginia, Circa 1822.

Jones (1790-1858) had a distinguished career in the U. S. Navy serving as an officer in the War of 1812 and later as Commander of the Pacific Squadron.

 **HERCULES J. PAPPACHRISTOS**   
**ART & ANTIQUES**  
 Derry, New Hampshire Tel: 603.548.5959



SPECIAL  
SHOW  
SECTION

# THE 60TH ANNUAL New Hampshire Antiques Show



**CHRISTOPHER & BERNADETTE EVANS ANTIQUES**, Waynesboro, N.J. — A very folksy confidence decoy of a seagull in layers of old white paint. It dates from the early Twentieth Century and measures about 21 inches tall on a wood block stand.



**STELLA RUBIN**, Darnestown, Md. — Rainbow quilt, also known as Flo's Fan, a rarely seen pattern done in pleasing shades of pastels. It is of Pennsylvania origin, circa 1920.



**OLDE HOPE ANTIQUES**, New Hope, Penn. — Rare miniature six-board chest, initialed "A.H.," New England, circa 1820, measuring 6½ inches high, 11 inches wide and 4 inches deep.



THE 60TH ANNUAL  
**New Hampshire Antiques Show**  
Radisson Hotel  
Manchester, NH  
**August 10-12, 2017**  
THURSDAY & FRIDAY: 10AM - 7PM  
SATURDAY: 10AM - 4PM

**JOHN GOULD**, Yorktown Heights, N.Y. — Graduated blue shelves with two dove-tailed drawers and measuring 28½ inches wide, 35 inches high and 7½ inches deep.



**KATE A. ALEX**, Warner, N.H. — A unique French cast wrought iron stand with an inset marble top. Both ends of the stand have crossed arrows and it measures 28 inches tall.

# Cherry Gallery



Pictorial hooked rug of a moose and duck, circa 1940



Exceptional mosaic twig house model, circa 1900

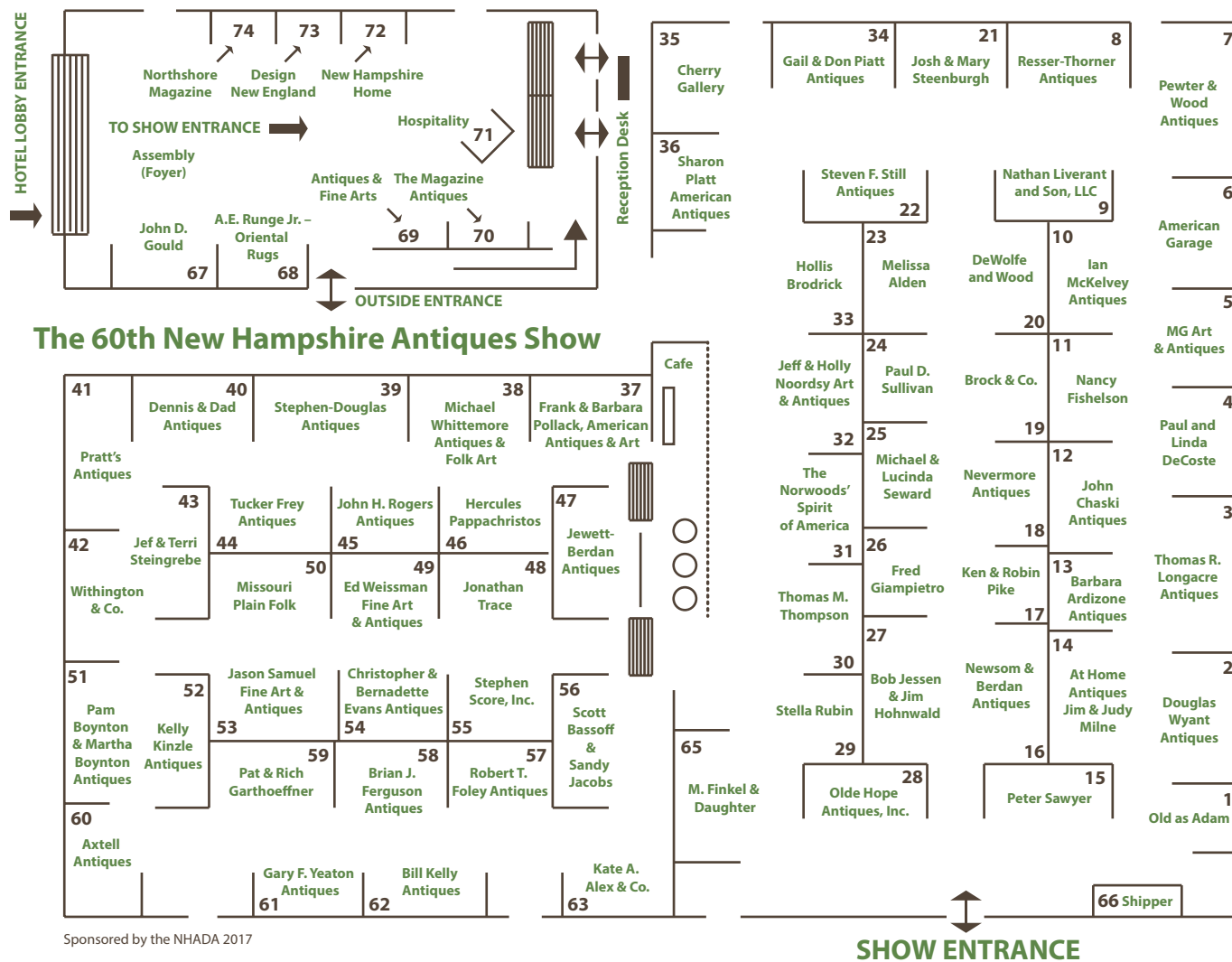
Damariscotta, ME 207.563.5639 [cherrygallery.com](http://cherrygallery.com)



# THE 60TH ANNUAL New Hampshire Antiques Show

SPECIAL  
SHOW  
SECTION

## 2017 NHADA EXHIBITOR LIST



Sponsored by the NHADA 2017

- |   |          |   |          |
|---|----------|---|----------|
| Melissa Alden, Portsmouth, NH                           | Booth 23 | Nevermore Antiques, Dover, NH   | Booth 18 |
| Kate A. Alex & Co., Warner, NH                          | Booth 63 | Newsom & Berdan Antiques, Thomasville, PA   | Booth 16 |
| American Garage, Los Angeles, CA                        | Booth 6  | Jeff & Holly Noordsy Art and Antiques, Cornwall, VT                                 | Booth 32 |
| Barbara Ardizone Antiques, Salisbury, CT                | Booth 13 | The Norwoods' Spirit of America, Timonium, MD                                       | Booth 31 |
| At Home Antiques, Jim & Judy Milne, Kingston, NY        | Booth 14 | Olde Hope Antiques, Inc., New Hope, PA  | Booth 28 |
| Axtell Antiques, Deposit, NY                            | Booth 60 | Old as Adam, Portsmouth, NH   | Booth 1  |
| Martha Boynton Antiques, Groton, MA                     | Booth 51 | Hercules Pappachristos, Derry, NH   | Booth 46 |
| Pam Boynton, Groton, MA                                 | Booth 51 | Gail & Don Piatt Antiques, Contoocook, NH   | Booth 34 |
| Brock & Co., Concord, MA                                | Booth 19 | Ken & Robin Pike, Nashua, NH  | Booth 17 |
| Hollis Brodrick, Portsmouth, NH                         | Booth 33 | Sharon Platt American Antiques, New Castle, NH                                      | Booth 36 |
| John Chaski Antiques, Camden, DE                        | Booth 12 | Frank & Barbara Pollack American Antiques & Art,<br>Sunapee, NH / Highland Park, IL | Booth 37 |
| Cherry Gallery, Damariscotta, ME                        | Booth 35 | Pewter & Wood Antiques, Enfield, NH   | Booth 7  |
| Paul & Linda DeCoste, West Newbury, MA                  | Booth 4  | Pratt's Antiques, Victor, NY  | Booth 41 |
| Dennis & Dad Antiques, Fitzwilliam, NH                  | Booth 40 | John H. Rogers Antiques, New London, NH   | Booth 45 |
| DeWolfe and Wood, Alfred, ME                            | Booth 20 | Stella Rubin, Darnestown, MD  | Booth 29 |
| Christopher & Bernadette Evans Antiques, Waynesboro, VA | Booth 54 | A. E. Runge Jr. -- Oriental Rugs, Yarmouth, ME                                      | Booth 68 |
| Brian J. Ferguson Antiques, Swansea, MA                 | Booth 58 | Jason Samuel Fine Art & Antiques, Milford, NH                                       | Booth 53 |
| M. Finkel & Daughter, Philadelphia, PA                  | Booth 65 | Peter Sawyer, Exeter, NH  | Booth 15 |
| Nancy Fishelson, Orchard Park, NY                       | Booth 11 | Stephen Score, Inc., Boston, MA   | Booth 55 |
| Robert T. Foley Antiques, Gray, ME                      | Booth 57 | Michael & Lucinda Seward, Pittsford, VT   | Booth 25 |
| Tucker Frey Antiques, Woodbury, CT                      | Booth 44 | Mary & Joshua Steenburgh, Pike, NH  | Booth 21 |
| Fred Giampietro, New Haven, CT                          | Booth 26 | Jef & Terri Steingrebe, New London, NH  | Booth 43 |
| Pat & Rich Garthoeffner, Litz, PA                       | Booth 59 | Stephen-Douglas Antiques, Rockingham, VT / Walpole, NH                              | Booth 39 |
| John D. Gould, Yorktown Heights, NY                     | Booth 67 | Steven F. Still Antiques, Manheim, PA   | Booth 22 |
| Scott Bassoff and Sandy Jacobs, Swampscott, MA          | Booth 56 | Paul D. Sullivan, Manchester, NH  | Booth 24 |
| Bob Jessen & Jim Hohnwald, Fitzwilliam, NH              | Booth 27 | Thomas M. Thompson, Pembroke, NH  | Booth 30 |
| Jewett-Berdan Antiques, Newcastle, ME                   | Booth 47 | Resser-Thorner Antiques, Manchester, NH   | Booth 8  |
| Bill Kelly Antiques, Limington, ME                      | Booth 62 | Jonathan Trace, Portsmouth, NH  | Booth 48 |
| Kelly Kinzle Antiques, New Oxford, PA                   | Booth 52 | Ed Weissman Fine Art & Antiques, Naples, FL   | Booth 49 |
| Nathan Liverant and Son, LLC, Colchester, CT            | Booth 9  | Michael Whittemore Antiques & Folk Art, Punta Gorda, FL                             | Booth 38 |
| Thomas R. Longacre Antiques, Marlborough, NH            | Booth 3  | Withington & Co., Portsmouth, NH  | Booth 42 |
| Ian McKelvey Antiques, So Windham, CT                   | Booth 10 | Douglas Wyant Antiques, Cassopolis, MI  | Booth 2  |
| MG Art & Antiques, Merrimac, MA                         | Booth 5  | Gary F. Yeaton Antiques, Concord, NH  | Booth 61 |
| Missouri Plain Folk, Sikeston, MO                       | Booth 50 |   |          |

