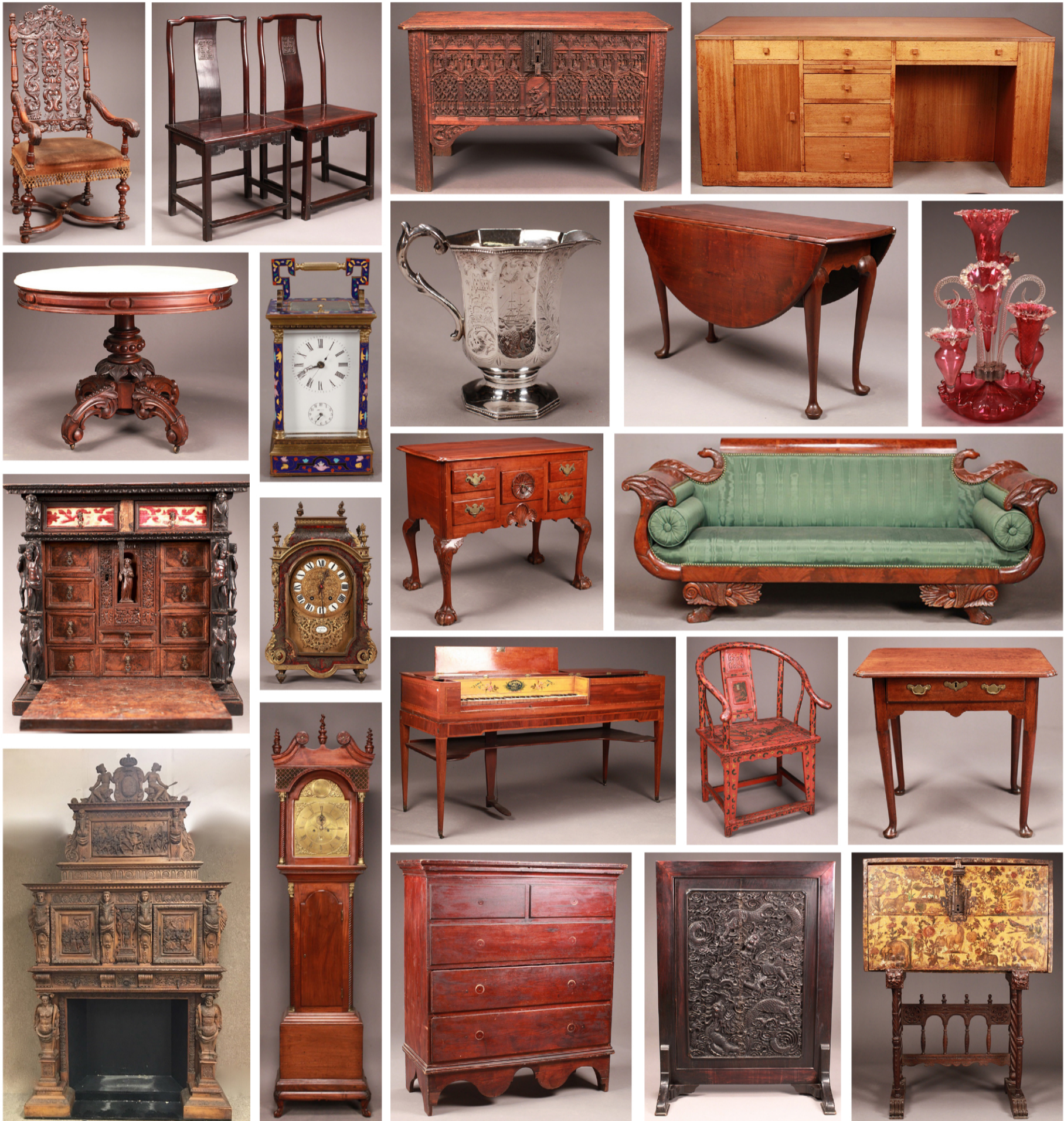


# Douglas

**AUCTION • FRIDAY, SEPTEMBER 25 AT 6 PM**

*FEATURING FINE FURNITURE FROM A PROMINENT MUSEUM  
AND THE CONTENTS OF  
THE "ALLEN FAMILY" HOUSE OF HISTORIC DEERFIELD*



**FURNITURE - CHINESE:** Pair of rosewood side chairs (ex Olive Percival estate auction 1945), 2 carved rosewood dragon screens, 5 marble top carved stands, antique red lacquer items including: 2 stands, alter table, 3 small cabinets and armchair, export camphorwood chest, 2 sets of stacking tables, custom carved rosewood sideboard, carved table screen, bar, slant lid desk, stands and chest, massive 3-part painted leather room screen, campaign chest. **CONTINENTAL:** outstanding massive 18<sup>th</sup> c. French carved fireplace mantel, carved 17<sup>th</sup> c. writing cabinet, 17<sup>th</sup> c. Spanish valuables chest, Flemish chairs. **ENGLISH:** 1-drawer tea table (ex Ginsburg & Levy), Georgian chairs, late gothic carved oak coffer, Irish center table. **EARLY AMERICAN:** 1, 2, and 3-drawer blanket chests, Chippendale lowboy, Duncan Phyfe 8 leg sofa, Sheraton chest, Sheraton sewing stands, several card tables and candlestands. 18<sup>th</sup> C. secretary, Hepplewhite chest and tables, corner

chair, cherry slant front desk, Queen Anne candlestands, Empire eagle sofa, pair of Shaker low chairs, Queen Anne dining room table, 18<sup>th</sup> c. Gateleg table. **VICTORIAN:** sofas, Morris chairs, marble top center table. **MODERN:** mahogany partner's desk attr. to Devon Dennett, side chair attr. to Lucian Bernhard, teak screen, custom Welsh dresser, teak sideboard, cabinet/desk, Henkel-Harris dining room set, burl chart cabinet.

**HEPPLEWHITE INLAID MAHOGANY  
RECTANGULAR PIANO BY WHAITES &  
CHARTERS N.Y.**

**CLOCKS:** Riley Whiting tall clock, Scottish tall clock (Wm. Morison, Perth), fine reproduction Thomas Harland tall clock by Sligh Furniture, reproduction banjo clock by T.E. Burleigh, several mantel, shelf and wall clocks, atmos clock, walnut standing regulator, 3 carriage clocks

(1 cloisonné repeater), 2 crystal regulators, German bracket clock, French mantel clock (Gribelin, Paris).

**GLASS & CHINA:** 83 pc. Lenox "Golden Wreath", 80 pc. Lenox "Essex", Steuben plates & vase, Rose Medallion, Canton, Moser cordial set cranberry epergne, candelabras **SILVER:** Baleen and silver toddy ladle raised from the ship "Earl of Abergavenny", Georgian 3 pc. tea set and creamers, heavy sterling charger, and more.

**ACCESSORIES:** 4 pair of brass andirons, surveying compass (Browning & Son, Boston, MA), Franklin County and Greenfield atlases, books, horse drawn ice saw, carved wood Madonna & child, decorated toleware trays, bronze by Jules A. Garnier American and European paintings, etchings, prints, and more.

**NOTE: Extended Preview Sept. 24, 8AM – 4PM,  
Fri, Sept. 25, 8AM – 6PM (MASKS PLEASE)  
Absentee and Phone bids accepted**

**AUCTIONEERS (413) 665-2877  
ROUTE 5, SOUTH DEERFIELD, MASS. 01373**

TO VIEW CATALOG NOW, VISIT OUR WEBSITE  
**www.DouglasAuctioneers.com**

