

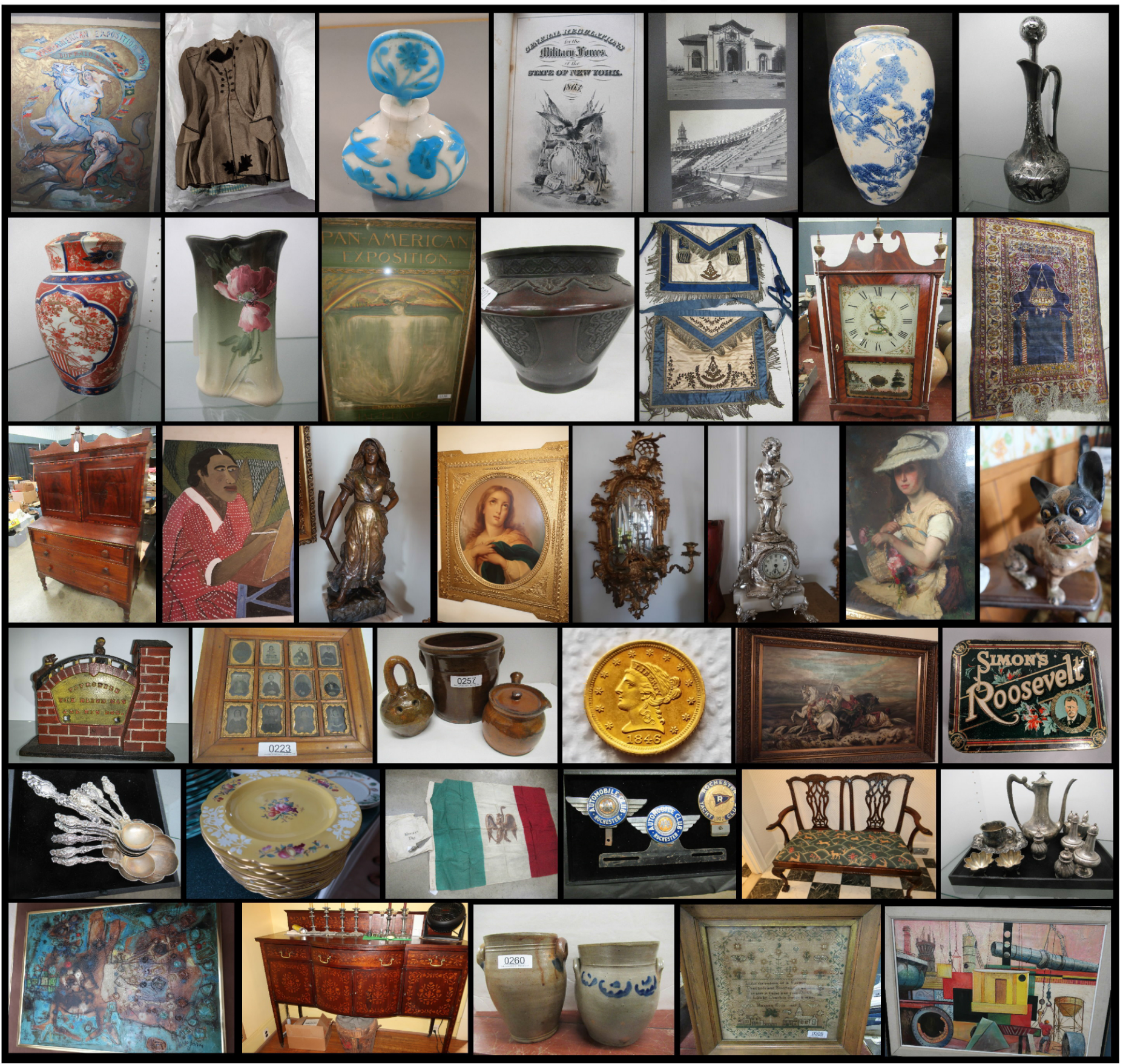
2 DAY ANTIQUE ESTATE AUCTION

Thursday & Friday, OCTOBER 15 & 16

Auction starts @ 10am (Previews: Wed. 10/14 - 11 to 4 & 10am Day Of)

Selling Collections from 2 Museums, important collection of Pan Am Items, an Estate packed full (3 floors) and other small collections.

FURNITURE, PAINTINGS & PRINTS, GLASS, CHINA, POTTERY, SILVER, JEWELRY, COINS, CLOCKS, ANTIQUE CLOTHING, PRESIDENTIAL AUTOGRAPHS BY TEDDY ROOSEVELT & GROVER CLEVELAND, BRONZE & MARBLE SCULPTURES, LEADED GLASS WINDOWS, ORIENTAL RUGS, ANTIQUE FLAGS, SLOT MACHINE, ANTIQUE HARDWARE, LINENS, ADVERTISING, LAMPS, TRAINS, CAST IRON BANKS, TOYS, DOLLS, ANTIQUE FISHING EQUIPMENT AND FLY RODS, SPORTS CARDS AND MORE!



SCHULTZ

Auctioneers



Clarence, NY

Kelly & Ben Schultz Auctioneers
Clarence, NY (716) 407-3125
11177 MAIN ST. CLARENCE, NY
Additional info & photos go to
www.SchultzAuctioneers.net
Bidding In House, on SchultzAuctioneers.net
or LiveAuctioneers.com