

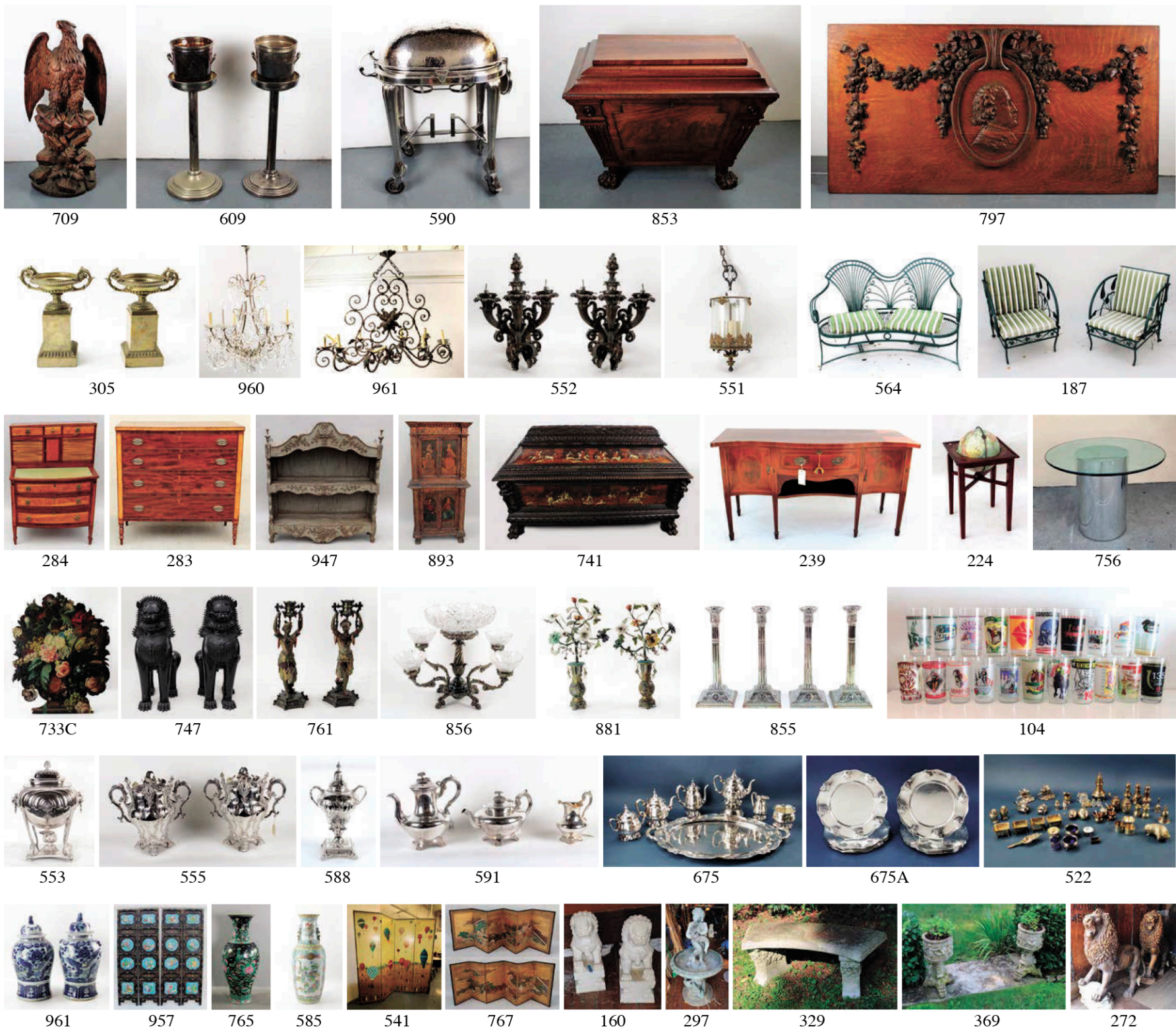
## 55 Waldingfield Rd, Ipswich MA

# October Ipswich Auction

Saturday & Sunday, October 2nd & 3rd  
 starting at 10AM EST



Kaminski Auction October 2nd & 3rd auction will be held on-site at the Waldingfield estate in Ipswich, Massachusetts. Built in 1929, the estate sits atop 40 acres overlooking the Ipswich River with formal gardens, French tree allée, and horse trails. Waldingfield was purchased in 1984 by Arthur J. Finklestein, a notable conservative strategist who masterminded the political campaigns of numerous presidents, senators, and governors. He and his partner, Donald Curiale, lovingly restored the home to its present elegance. A selection of English and European furniture and decorative arts, many original to the chateau will be on offer in the auction, as well as additions from other estates.



## 55 Waldingfield Rd, Ipswich MA

# October Ipswich Auction

Saturday & Sunday, October 2nd & 3rd  
 starting at 10AM EST



Kaminski Auction October 2nd & 3rd auction will be held on-site at the Waldingfield estate in Ipswich, Massachusetts. Built in 1929, the estate sits atop 40 acres overlooking the Ipswich River with formal gardens, French tree allée, and horse trails. Waldingfield was purchased in 1984 by Arthur J. Finklestein, a notable conservative strategist who masterminded the political campaigns of numerous presidents, senators, and governors. He and his partner, Donald Curiale, lovingly restored the home to its present elegance. A selection of English and European furniture and decorative arts, many original to the chateau will be on offer in the auction, as well as additions from other estates.





810B 810A 174 857 795 774 644 733B 737 712 662



70 733A 80 84 782 183B



100B 60A 146 109 177 631 247 206



926 938 940 942



711 708 116 706 713 629



203 597 273 291 259



199 250 214 205 201



204 179 243 26 127 126 117