

# ANNUAL WINTER AUCTION

2 DAYS – January 8<sup>th</sup> and 9<sup>th</sup> 2022 • 12:00 noon both days

PREVIEWS: Friday January 7<sup>th</sup> 3pm-6pm, Saturday and Sunday 9am-12pm

Rockland Elks Lodge • 210 Rankin St. • Rockland, Maine

I'm so pleased to offer a wonderful selection of Americana, gold coins, jewelry, paintings, silver, oriental rugs, books, folk art, sports memorabilia and much more. **Day 1** will feature gold coins, jewelry, sterling silver, books, prints, and sports memorabilia. **Day 2** will feature Americana, modern art, folk art, paintings, oriental rugs, early furniture, and more fresh estate antiques and collectibles.

**Highlights of the weekend are:** (61) United States twenty dollar gold coins, Rare Alexander Calder 1898-1976 wall tapestry, important Jessie Hazel Arms Botke 1883-1971 oil painting of 2 peacocks, diamond and turquoise necklace with over 10 carats of diamonds, incredible quality estate jewelry, abstract wood fish carving by Robert Hughes 1915-2004, Art Nouveau Lily pattern sterling silver service by Whiting, the Parker Morse Hooper library with lots of leather books and first editions, 6' American sawbuck harvest table, rare

Queen Anne country armchair, 18thc stretcher base tavern table, ships portrait oil by S.F.M. Badger 1873-1919, and much more!  
Go to the website for more info for both days. We welcome absentee and live phone bidding. Hope to see you there, Bruce

[gamageantiques.com](http://gamageantiques.com)



(61) U.S. \$20 gold coins, 19th and 20thc.



Diamond and turquoise necklace (10) plus carats of diamonds



Diamond and pearl bracelet, 100 pearls, 109 diamonds, 43.7 dwt. platinum



French turquoise, sapphire diamond bracelet, 18k



Diamond star brooch, 49 diamonds, 2in. platinum



Diamond and sapphire clasp on 8 strand pearls



Ruby and diamond 3in. strawberry brooch, 18k



Fine platinum diamond and emerald bracelet



French diamond brooch, 3in. 18k.



French turquoise and diamond dinner ring, 9.6 dwt.



Azurite with malachite and sapphire stone dinner ring, 14k, 14.5 dwt. 1.5in.



Diamonds, platinum, 1.6in. 9.1dwt



Emerald, diamond, ruby, 18k



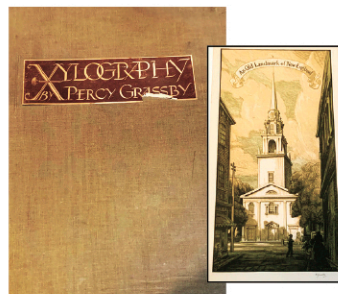
Imperial Jade ring, 18k



Ladies Rolex stainless and gold watch



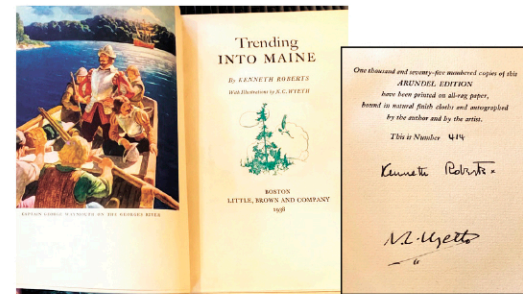
Over 50 lots of Parker Morse Hooper's library of books



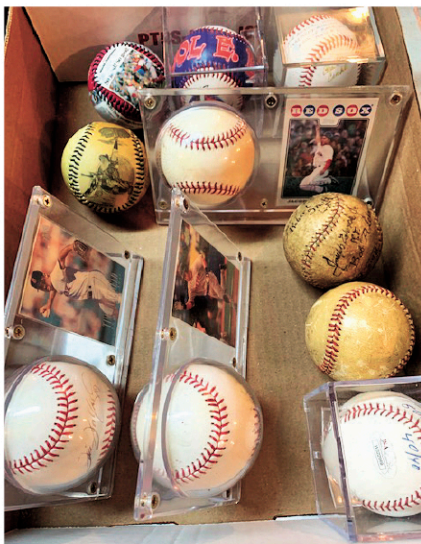
Percy Grassy portfolio (Boston buildings) all signed



Leather books and book sets



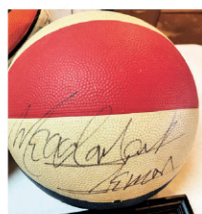
Trending to Maine, signed by N.C. Wyeth



Baseball lot



Johnny Pesky signed hat



Meadowlark Lemon signed basketball



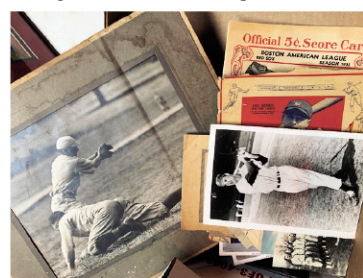
Gaylord Perry and Phil Rizzuto signed balls



Jackson Nesbitt etching



Asa Cheffetz wood engraving



Vintage baseball photos, programs, etc.



Johnny Pesky signed World Championship photo



Whiting Co. Boston, sterling silver service for 12 with serving pieces. 180oz.



Miguel Covarrubias, 1904-1957, signed lithograph





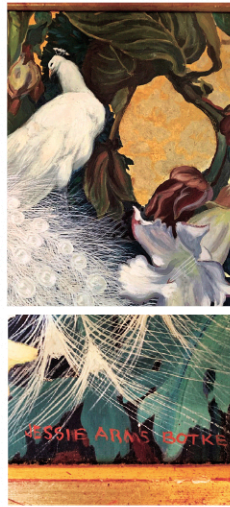
Rare Queen Anne country armchair



Abstract wood carving 27x21in. by Robert Hughes 1915-2004



Jessie Hazel Arms Botke 1883-1971 oil, 22x29in.



25/50

CA



Gouche titled (Lobsterman's wharf) by Maurice Blackburn 1902-1979, 22x40in



Early 6 ft. sawbuck harvest table



Early tavern table with stretcher base



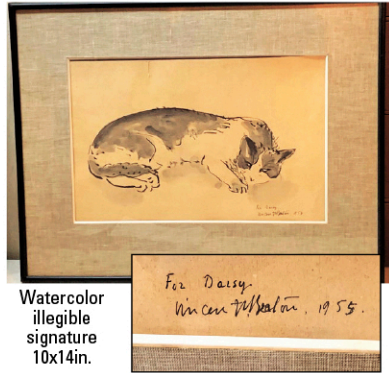
Watercolor by Maurice Blackburn 32x40in.



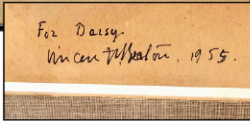
Alexander Calder tapestry 60in. x 75in.



S.F.M. Badger oil, 22in. x 36in.



Watercolor illegible signature 10x14in.



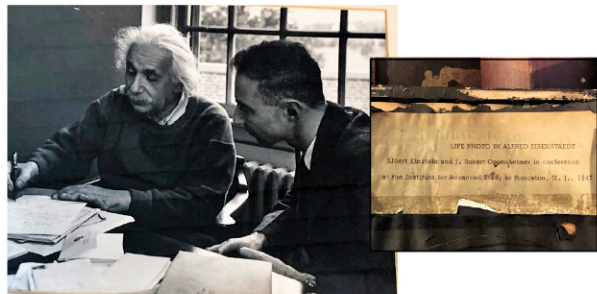
Fabulous store display cabinet circa 1870



19th c oil signed Magerer 22x27in.



Canadian lynx full length coat



Rare photo of Albert Einstein and J. Robert Oppenheimer in conference by Alfred Eisenstaedt, 1947



Camphor Wood Campaign Chest



Folk Art wood carved deer head



Early red paint Pennsylvania blanket chest



Several good persian rugs



Persian carpet 8'7 x 11'9 in.



18thc. Chippendale desk 36in. wide



Lloyd Thomas eagle carving 18in.



Fabulous Folk Art hooked rug, 25x36in.



Persian rug 4'5x6'5in.



Oversized porringer and large pewter charger 1774



Rocco mantle clock set



19thc. marble urn 30in.



Victorian dollhouse



Sheet metal weather-vane circa 1940



Pittsburg Lamp Company



# BRUCE GAMAGE JR.

ANTIQUÉ/ESTATE AUCTIONEER

467 MAIN ST., ROCKLAND, ME 04841

207-594-4963 • FAX 207-594-0674

E-MAIL: BGAMAGE@MIDCOAST.COM

MAINE LICENSE #0480

TERMS: 15% Buyer's Premium  
Checks accepted with proper I.D. or preapproval | MC/Visa/AmEx  
Maine sales tax of 5.5% applies | Dealers must supply Tax ID certificate  
Auctioneer reserves the right to hold certain items until checks clear  
All listings are subject to error