

BILL SPICER AUCTION

WEDNESDAY, April 20, 2022 • 5pm • viewing at noon

Washington Lodge Masonic Temple • 1515 Ten Rod Rd, North Kingstown, RI

For more pictures see auctionzip.com (auctioneer # 2954) • **Day of auction 401 265-5104**



3 Kachina Warriors one by Elmer Adams



Cut glass pitcher



3 Pueblo New Mexico pots



Over 40, 1960's car and truck kits



Cut glass lot



Mid-century modern coffee table



Set of 8 Empire chairs



1855 French bronze of boy hiker by E. Blavier 21" tall



Early tavern table



Lot of Indian jewelry rings



Bronze by Fritz White of Indian on horseback



Flintlock rifle



10 cent comics



Cast iron toy lot (over 50 boxes of toys)



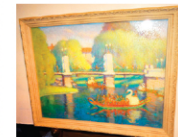
6 Quanita Kalestewn Zuni owls and chicks



Zuni fetish necklace



Tornado Woodette racer



Pastel by Principato 25"x21"



Oriental rug 79"x51"



Bronze bust of woman by Waters



Oil/b by C. Gordon Harris, 12"x14"



Hawkes cut glass



Bronze Indian on horse by Elie Hazak 22 1/2" x 17 1/2"



6 Santa Fe Lionel trains

FURNITURE/RUGS: mid-century modern coffee table; 2 mid century chairs; post office box window; oak display case; period tea table; stacking bookcase; Pembroke one-drawer stand; highboy; mahg corner cupboard; Hepplewhite 4-drawer bureau; pr Hepplewhite chairs; Federal secretary; early tavern table; set of 8 Empire chairs with fluted legs; Oriental campaign chest; Asian carved chest; 2 Asian tables; Asian 2-door red lacquer cabinet; 4 rattan ottomans; pole lamp; 10 Oriental rugs incl: 10"x4' Boteh, 65"x37", 79"x51"; 4x37", 6'7"x3'7", 5'6"x3'11"; 3 Taepfer Danish rugs

CUT GLASS: Pitkin & Brooks "Meadville Pattern" experimental piece; rare 1893 "Columbia" pattern by Libbey; Plateau mirror; cut glass lot; 2pc green cut to clear glass; 4 pc Hawkes stemware; blue cut to clear decanter; 11.5" compote; sterling and cut sugar shaker; 6 pc art glass incl: amberina & peach bowl; 8.8" Hawkes rare vase; crystal overlay perfume; Emil Larsen Honey opalescent vase; Hawkes glass bowl; 4 pc Pomona N.E. Glass Co pcs; unsigned Libby jug in Marcella pattern; cut glass pitcher

BRONZES: 1854 French boy hiker by E. Blavier, 24.5"; elephant by "Barye"; 2 rams by Romain Bronze Works, NY; standing Indian "Prayer to the Great Mystery", 1969 by Tom Knapp; 6.5" horse head by G. Silvatone, C. Scarpitta; 3 horses by Cynthia Ridgen, Arizona; "Free Trapper" by Keith Christie; man with flute & cougar by E. W Deming; eagle head by H. Nifao, 10"Lx6"Wx8.5"H; Indian on horse back by Elie Hazak, 1979, 21.5"H x 17.5" L; 4 elks statue; bust of woman by Waters; Indian on horseback by Fritz White; man signed A. Camels, 1855; head of girl signed AE (Abastenia St. Tiger Eberle)

MISC: 1933 whales tooth presented to Capt. Roger Williams; 3, 45-star flags; other flags; Regina music box; RI license plates from

1938 -1956; marbles; round mirror with eagle; Medallion Art Co medal; ivory card holder; ivory lot; Western Electric phone; 3 Danish birds signed "John"; 1885 crazy quilt; calendar clock by The Ingraham Co, Bristol, CT; 2 Rose Medallion tea caddies; Rose Medallion bowl; 2 Satsuma vases; Imari; pr Japan lamp bases; 2 Chinese tea boxes; Chinese dishes; Chinese bowl; 2 Asian boxes; Wedgewood U.S. Naval Academy plates; Dedham platter with bunnies; 12 candlesticks; Chintz dishes; cast iron pans; ship model "Endeavor"; signed Red Sox baseball; "Free Lunch Bar" figure; 2 Deluxe radio phones; 2 boxes radio tubes; 2 Hall Craft, Arizona lamps; box of stamps; 2 drums

NATIVE AMERICAN: Leona St Clara black pot; Veronica S.C.P. black pot; H. Began Navajo pot; 6 Quanita Kalestewn, Zuni N.M. owls and chicks; David Lalo Hopi pottery; Bertha Gachupini pots, owls; Emma Lewis, Acoma pots; 7.5" W. Gracia, Acoma vase; 3 Pueblo N.M. pots; 8"x7" jar by Jennie Laate, Zuni; ruby Panama Zia pot; 9.5" Stella Shutiva jar; Acoma N.M. jar by M.V.; Jemez Pueblo vase; Michelle Tapia, Santa Clara pots; 10" bear and antelope jar by Joe, Acoma; 13 Kachina warrior figures; Indian baskets by (Paiute, Rose Martini, Rosemary Lang); Zuni Fetish necklace; Pawn circa 1960 flower pendant; 4 Indian necklaces; Zuni turquoise necklace; 7 Native sterling & turquoise necklaces, rings; Jobeth Mayes bracelet, ring & belt; many more Native American jewelry

EPHEMERA: 29 - 1911 "The Encyclopedia Britannica"; nautical books; late 1800s photo Wakefield, RI bank; 4 Election posters for Governor Green; 10 cent comics

MILITARY/TOOLS/FISHING: flintlock rifle and pistol; antique revolver
PAINTINGS: watercolor by John Hare, 25"x20"; w/c by Kimball 24"x30"; painting by G. Whitaker, 1915; painting by Loughlin 16"x10";

oil/b by C. Gordon Harris 12"x14"; pastel by Bower 24"x21"; oil/b by Woodbury; oil/b by L.L. Carter 10"x16"; pastel by Principato 25"x21"; pastel by Nate Dunn 14" x 10"; w/c by S.L. Pitman 8"x11"; "motto child's ride on merry go round; 2 Oriental paintings

TOYS: Halloween noise makers; 3 early pumpkins; 4pc wind-up Marx train set; 4 Ives Lionel trains; Lionel type ZW & KW transformers; Lionel #s 736,1875, 1876, 36621, 2365, 6430 trains; 6 Santa Fe Lionel trains; Keystone RR #6400 train; Marx streamline train set; Ginny Dolls; Mme Alexander dolls; dolls in original cases; 2 International Barbies; approx. 40, 1960s model car and truck kits in original boxes; Tornado Woodette racer; Marx Deluxe Dial typewriter; Barber & Greene sand elevator; Wyandotte target game and mechanical shooting gallery; Marx service station; 1920s Gibbs service station; die cast & Tootsie toy vehicles; Dinky toy cars; Hubley and Structo trucks; Kingsbury bus; Bburago toys; Smith Miller - GMC trucks; 1950s Japan tin lithos; Tonka backhoe; Buddy L Hertz car carrier; 1950s Tonka fire pumper with fire plug, jeep and boat; over 50 boxes of cast iron toys

Cash. RI or known check only. Mastercard/Visa.

15% buyer's premium - 3% discount cash, check or debit
DEALERS - BRING PROOF OF TAX NUMBER

BILL SPICER AUCTIONEER/APPRaiser
276 Widow Sweets Rd., Exeter, R.I. 02822 401 265-5104

DIRECTIONS: FROM CT, take 95 north to exit 5A (102 S). follow 102 S, cross over Rt 3 and continue on 102 for approx 9 mi. Temple is on left.

FROM MASS: take 95 south to exit 9 (Rt 4), follow Rt 4 to exit 3B (102 N). stay on 102 for 1/4 mile. Temple is on right.