

BILL SPICER AUCTION

WEDNESDAY • September 21, 2022 • 5pm • viewing at noon

Washington Lodge Masonic Temple • 1515 Ten Rod Rd, North Kingstown, RI

For more pictures see auctionzip.com (auctioneer # 2954) • **Day of auction 401 265-5104**



19th c. Chinese Vegetable Dish



Marble Base Clock



Chinese Export Bowl



Smith & Wesson WWII 45cal. Pistol



Lone Star Quilt



Excellent Pantry Boxes (2)



Oil/c Portrait of Joseph Warren Greene, Jr



Oil/B Farm/Mountains by Anton Schiffer



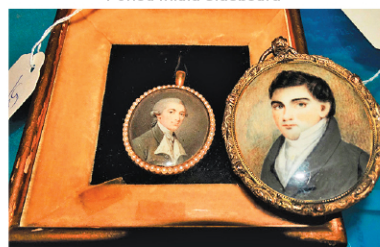
Period Inlaid Sideboard



Oil/c Seascape with Boats, 50"x30"



Chinese Rug 6'x3'



Two Period Miniature Portraits John Culter



29" Sterling Concho Belt



Oil/c Ship by James Buttersworth



Painting by J. G. Tyler



1707 "Grecian History" by Temple Stanyan



Famille Rose Canton Vase



Period Andirons & Tools



Cold Painted Plaque by Louis Hottot



Early Mahg. Secretary Desk



1817 David Williams, Newport Clock



Misc Fireplace Items



Period Chest on Chest



Elisha Durfee Prov. Weighted Banjo Clock

FURNITURE/CLOCKS/RUGS: 1817 David Williams, Newport, RI grandfather clock; 18th cent. English grandfather clock – JN Graham; Elisha Durfee Prov. weighted banjo clock; marble base clock; period inlaid side board; period chest on chest; one and two-drawer tables; early tilt top table; period Queen Anne table; early gilt mirror; blanket box; possible Shaker rocker; period Queen Anne chair; child's high chair; period English slant front desk; early mahg secretary desk; mahg sideboard; early chairs; flip top card table; Granny bench; Pembroke drop leaf table; inlaid small table; 3pc marble bedroom set; lap desk; Oriental rugs; Chinese rug

MISC: pr 14 ½" Rose Medallion platters; Famille Rose Canton vase; two, 25 ½" cloisonne urns; 2 Royal Doulton figures; girl statue w/ cow; Rose Medallion floor vase; cut glass pitcher & vase w/ sterling top; umbrella stand; 10 Tiffany plates; 10pc Mottahedeh plates; flint glass lot; Haviland compote; Roseville; Royal Bayreuth pitcher; flow blue dishes; Dresden lamp base; 2 early sandwich decanters; English pitcher with griffin; Vict sled; child's rocking horse; early saddle bottle; "Gen. Stark Inn" sign; Oriental cold painted plaque by Louis Hottot, 1829-1905; Chinese Export bowl; 19th cent. Chinese vegetable dish; 2 Oriental copper receptacles; Asian lamps; 2 Asian planters; bronze Asian man on horseback; metal man & horse; dovetailed box; 2 excellent pantry boxes; firkin and wood carriers; spice box; slipware bank; crocks/jug w/ blue; small early wooden bucket; penny camera; 2 hog scrapers; butter churn; woodenware lots; Lone Star quilt; 9 quilts; sampler; dress form; wooden cane; 2 wooden ship models; 2 sailboats in case; hats & purses; Congress beer box & bottles; 3, 1950's Knickerbocker trays; 250 pcs Knickerbocker beer can openers; 7 corkscrews; Amstel coasters; 1935 CT license plate; Daisy nursing bottle; Mary Gregory epergne; cinnabar vase; "artist model" trumpet; Bacon banjo; German violin; 2 slag glass lamps; "All Pro AMF 1978 Roadmaster" moped; "Star Six Cord" cabinet; Snyder baseball bat; bird cage; Keystone Magic lantern; cloth banners; 7up cooler; pr oars; quahog rack; box of keys; period andirons & tools; misc fireplace items

EPHEMERA: 1707 "The Grecian History" by Temple Stanyan; 1742 La Sainte Bible – Suria Vulgate; 1692 "Sermon du R.P. Claude la Colombiere"; 2 vols "Farthest North" by Nansan with maps; French architecture books; "Architecture Poque Louis XVI" booklet; 1769 L'Office de la Quinzaine de Pasque"; 1758 "Religious Books" diocese D'angers; 1st edn "Mechanism of Steam Engines" by James & Dole; 1880 "The Poetical Work Longfellow" illus; 4 vols 1866 "Historic Literature Anglaise" by Par H. Taine; 9 books "Romain Rolland les Amies Paris"; 2, 1922 "Early English Furniture & Wood Working" books; Madd magazines; box of RI paper; 6 "Encyclopedia of Mass";

15 histories of Mass & RI books; 2, 1895 Bristol County Mass, atlases; "The Scribner – Black Atlas of the World"; early textile books; Cotton Mill books; "Ancient European Musical" book; 1875 "The Turner Gallery"; 1865 discharge papers; 1791 engraving of a man; WWII pictures; 1940's scrapbook of movie stars; photos by Fred Haverly; Troupe de Mile E. Glanitime" poster; 2 photo albums; 1943 Richfield calendar; picture of military man; 1635 Family Tree of Edmund Hobart family; vols 1 & 2 "The Cathedrals of England & Wales"; 1st edn 1969 "The Edison Cylinder Record Book"; 1st edn "The Edison Cylinder Phonographs"; 1814 "The Odyssey of Homer" book; 1814 "Sermon Harriet Newell" book; 8 vols 1758 religious books

JEWELRY/STERLING: 29" sterling silver concho belt; Navajo squash blossom necklace; 3 Navajo necklaces; Nagessie necklace with silver beads; Fanny Ashley turquoise bracelets; Lonjose Zuni necklace & bracelet; Zuni dancer bracelet; Dead Pawn Zuni bracelet; ivory Deco belt & bracelet; sterling top pitchers & vases

MILITARY: Winchester 22 rifle; WWII Smith & Wesson 45cal. pistol & holster; W. Ritch dagger; German helmet; early rifle; Civil War crutches

TOOLS: 3 saws; vise; lot of chisels; 2 levels, one is Stanley #35; lot of hammers; lot of Stanley planes

PAINTINGS: oil/c ship by James Buttersworth; oil/b farm & mountains by Anton Schiffer; oil/c portrait of Joseph Warren Greene, Jr; oil/c seascape with boats, 50" x 30"; 2 period miniature portraits John Culter, 1725-1805; painting by J. G. Tyler; oil/c George Washington (damage); painting by C. L. Maxfield, 1905; oil/c cows & sheep; oil/c woman & child 24" x 17"; oil/c girl by James C. Platt, 25" x 30"; oil/b by Martin Kalef, 1863; oil/c woman by J. W. Beckwith; oil/b house & pond by JWF, 1854; 2 etchings by Hedley Filton; proof of trees by Barry Landers; Ethel R. Bratesman painting

TOYS: Lionel trains; children's books; misc puzzles; lot of toy car; lot toy airplanes in boxes; lot of lead soldiers; U.S. Coast Guard boat

Cash, RI or known check only.
Mastercard/Visa.

15% buyer's premium -
3% discount cash, check or debit

DEALERS - BRING PROOF OF TAX NUMBER

BILL SPICER AUCTIONEER/APPRaiser
276 Widow Sweets Rd.
Exeter, R.I. 02822
401 265-5104

DIRECTIONS: FROM CT, take 95 north to exit 5A (102 S). Follow 102 S, cross over Rt 3 and continue on 102 for approx 9 mi.

Temple is on left.

FROM MASS: Take 95 south to exit 9 (Rt 4), follow Rt 4 to exit 3B (102 N).

Stay on 102 for ¼ mile. Temple is on right.