

# Gustave J. S. White ~ Auctioneers

## RHODE ISLAND ESTATES AUCTION

Antique Furnishings, Carpets,  
Paintings, Objets d' Art  
from estates in Newport (3), Nantucket  
and Portsmouth, NH

Newport County Auction Gallery  
1674 East Main Road, Portsmouth, RI (Rte. 138)

**WEDNESDAY, June 7 at 10AM**

Inspection: Tuesday, June 6 from 1- 4 pm  
and one hour before sale on Wednesday

In the late 19th and early 20th Centuries the greatest names in Newport Society were Wetmore and Widener. The Wetmores owned "Chateau sur-Mer, and the Wideners owned "Miramar". This sale will feature articles from these two mansions, including a quantity of the finest silk linen we have ever seen. However, our favorite piece in the auction is a tallcase clock with a Nantucket provenance (Coffin, Slocum families) having a painted dial reading "Warranted by Ezra Kelly". Key has a whalebone knob. A seachest with a legend of its voyages is also from Nantucket. The auction's top price may be for a Serapi carpet, 11' x 13' 9", consigned by a member of the duPont family, who also contributed several Heriz rugs and two large Marshall Johnson seascapes. Silver is strong, with a Gorham "Buttercup" dinner service for 24 leading the way. The sale also features fine furniture from "Bonniecrist", including mottled marble commodes, Parisian looking glasses and paintings on scrim. Other offerings are ship models, garden statues, Louis Vuitton items, stained glass windows, auto and airplane accessories (to be sold at 12:30), and a variety of old artifacts from these estates. Artists represented: S.R. Burleigh (2); Y.A. Douthitt on scrim; Stephen Hopkins Hansel; R. Grosvenor; Marshall Johnson (2); J.M. Lewis; Neville Lewis (2); Louis Papaluca; Eveline Roberge (7); J.H. Wheeler (4); Mabel Woodward; Alexander Wyant (4); Luis Kronberg; Jules Herve; J.P. Dubord



F. Douthitt, H: 6'



Marshall Johnson, 22' x 40"



Shadow box, 40"



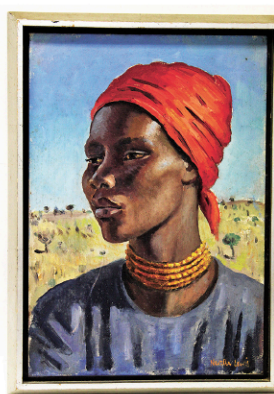
Alexander Wyant, o/c 15" x 24"



w/c M. Woodward, w/c 9' x 12'



"Warranted by Ezra Kelly"



Neville Lewis



Painted wood, H: 4 ft.



o/c 14" x 20", L. Papaluca



On Porcelain