

# Winter Associates

Auctioneers & Appraisers

**LIVE AUCTION**

**June 12 at 5:30PM**



**Americana; Civil War Soldier's collection; 19th & 20th C. Paintings, Prints and Photographs; Continental Decorative Arts including enamelware; Contemporary Art & Sculpture; Asian woodblocks, sculpture, etc.; Sterling; Jewelry; Weapons; Rugs; Books, etc.**

View catalog online as of June 2nd at [www.AuctionsAppraisers.com](http://www.AuctionsAppraisers.com)

**Previews: Friday, June 9, 12-4 pm Sunday, June 11th, 2-4 pm Monday, June 12th, 12-5pm or by appointment.**

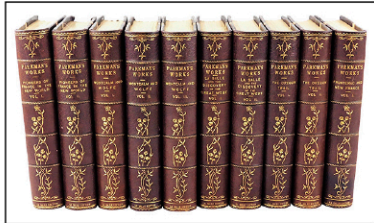
American furniture including chests, bookcase, drop-leaf tables, settle, stands, corner cabinet, trencher, beds, etc. along with fine reproductions by Warren Chair Works, Eldred Wheeler, etc.; Americana including weathervanes, stoneware, early tools and andirons, metalware, treenware, hooked rugs, early inkwells, etc.; Nautical including ship models, scrimshaw, maritime telescope, oil paintings; Civil War soldier items including bowie knife, letters, sketch book, bible, early photography, wedding ring, correspondence received from fellow soldier, along with Union poem "Jefferson Davis", Civil War envelopes and other early manuscripts and map; WWI and WWII bayonets and knives; Paintings by Robert Lebron, Robert Sanders, Albertus Jones, Alan Tompkins, M. Morris; 30+ AAA issued lithographs by T. H. Benton, Ivan Albright, Joseph Hirsch, Lawrence Kupferman, Emilio Amero, Nora Woodson, Luigi Lucioni, Harry Sternberg, Ellison Hoover and others; Etchings by Marc Chagall, James Whistler, Ernest Roth, Francis Haden, etc.; Jewelry including gold pocket watches, ivory, micro-mosaic goldstone, cluster rings, Zuni inlaid sterling, etc.; Porcelain including Herend, Flora Danica, Limoges; Sterling holloware, flatware services, etc. by Tiffany, Wallace, Gorham, Reed & Barton; Asian including woodblocks, scrolls, cast metal sculpture, cloisonne, carvings; Reverse painted and Art Deco lighting along with reproduction leaded glass lamps; Contemporary artwork including "10 by 10" portfolio containing nine limited edition of silver gelatin prints of the "East End artistic community" including Arthur Miller, Willem De Kooning and Lee Krasner and sculpture by Vasarely, Sobrino, Morton Fishman, Andy Warhol poster; 12 antique, semi-antique and modern Oriental rugs; 9 books lots including many on Connecticut history and Native Americans; Atmos clock, art glass paperweights, early advertising; Hurichol bead sculptures, and more.



Plaque attribution to François-Joseph Navez



Civil War Soldiers' collection: Hassam bowie knife sheath inscribed "A.I. Sands, Co. F. 38th Reg. M.V.", manuscript letters, sketch book, early photographs, bible, etc.



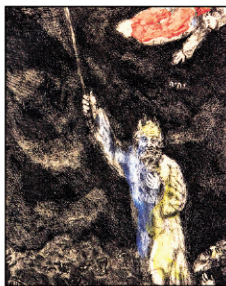
F. Parkman, 1 of 9 book lots



Stlg holloware & flatware



Thomas Hart Benton: "The Corral" & "Gateside Conversation"



Chagall, ed. 100, signed



Whistler "Annie"



Albright "Self-Portrait"



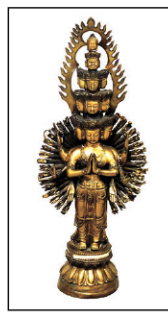
M. Fishman collection



Dekooning, L. Krasner, Miller, etc., of "10 by 10"



Chinese carving, 21" h



Tibetan, 41" h.



Shibayama, Meiji, 7 5/8" h.



19th C. Viennese enamel clock & music box, 7 1/2" h., 3 1/2" h.



Scrimshaw, 1 of 3



Bellamy style by Richard Orr of Mystic, 44" w.



1 of 4 Hokusai



Flora Danica, 9 1/2" w.



Tiffany stlg, 6 3/4" h.



Painted sea chest



Weathervanes



18K Waltham



19th C. embroidery



Fr. trinket cabinet, 14" h.



19th C. Viennese enamel, 7" h.



American, 18th C.



Rhode Island, inscribed "W 1793 D"



American, late 18th/ early 19th C.



1 of 4 Albertus Jones; c. 1800



17th C. New England chest, Lillian Cogan provenance



Vintage Oriental rugs

**TERMS: IN-PERSON AUCTION AUDIENCE Auction begins at 5:30 PM.** In addition to live bidding, Winter Associates will accept absentee and phone bids with a 23% Buyer's Premium and live online bidding will be available on [Invaluable.com](http://Invaluable.com) and [Liveauctioneers.com](http://Liveauctioneers.com) with a 28% Buyer's Premium. A 3% discount is available to buyers with cash and approved checks. After the auction, pickup will be by appointment only, please email or call ahead and we will do our best to accommodate you.

**LOCATION:** 20 mins. west of Hartford, CT. Approx. 2 hours from NYC or Boston.