



COYLE'S

Auction Inc.

TWO SESSION ANTIQUE ESTATES AUCTION

Tuesday, June 27, 2023

VFW Hall, 123 Holliston St., Medway, MA

SESSION 1: 2:30PM – Ephemera (See opposite page)

SESSION 2:
5:00PM – Estates Auction

PREVIEWS

Open! Mon. June 26th - 9:00 AM – 6:00 PM
Tues., June 27th - 9:00 AM to ½ hr. before sales

SEAT RESERVATIONS welcome.

Call or text 774-571-8263

or email us at: coylesauction@verizon.net

ABSENTEE AND LEFT BIDS ALWAYS WELCOME

www.coylesauction.com

We are pleased to offer a Fine Two Session Antique Estates auction featuring fine quality eclectic mix of fine furniture, artwork, porcelain, sterling silver, fine jewelry and much more drawn from Milton, Belmont, Beacon Hill, Fitchburg and a large Worcester home as well as items from a religious institution together with selected additions. Session 1 @ 2:30 will feature private collection from late Stuart "Bob" McDermott of Fitchburg of over 5000 postcards, stereoview cards, ephemera etc. Hundreds of fresh to the market offerings will be offered with no reserves. **Items from local estate arriving after deadline, watch for surprises!**



Fine porcelain



Gilt bronze candlesticks with marble



W.R. Sayle '75 Nantucket basket purse with whale carving



Musical bird cage



Portrait woman in pink dress signed S.B. Baker (Samuel Burtis Baker) 30" x 24"



Portrait of woman in lace (attr. Seymour Joseph Guy)



Dereck Harris o/c "Suspension of Dazzlement & Disbelief" 1994 41x56



o/c Place de la Madeleine, artist signed 12 ½ x 16



Fine gold jewelry



MCM German Blaupunkt Radio



Pair of oil on board countryside paintings signed G. Stimart 14 x 12



18th C Bowfront chest with exotic inlay on bun feet



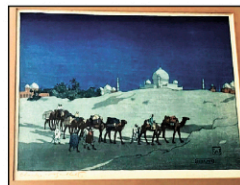
Antique Sheraton mahogany card table



6 Modern MCM style dining chairs (KFF Karl Friedrich Forster)



MCM bar cart



1 of 2 Charles W. Bartlett woodblock print in color Taj Mahal from desert (other is Kyoto)



Unusual antique Italian style desk



20" Alabaster urns w/ faces on handles



Pair of antique Rose Medallion garden seats



Early Italian carved cassone chest



Jacobean carved oak antique Jacobean style court cupboard



French style leather top desk with figural ormolu mounts



Highback early welch paneled back settee



MCM sideboard "Dux"



Carved antique Gothic furniture



J.P. Seeburg oak Nickelodeon with leaded doors and rolls



MCM furnishings



Beacon Hill estate furnishings



Antique banded inlay secretary



MCM Dining Set

SESSION 1 AT 2:30 PM

Private collection of vintage postcards, stereoview cards, photography, trade cards, greeting cards from the collection of the late Stuart "Bob" McDermott of Fitchburg, MA. Mr. McDermott was an avid longtime collector and member/officer of the local postcard club. The collection includes several albums & totaling well over 5000 postcards with many of his personal favorites.

(PLEASE SEE DETAILS AND PHOTOS ON OPPOSITE PAGE)

SESSION 2 AT 5:00 PM

FURNITURE: Unusual 18th C bowfront chest w/ exotic wood inlay on bun feet, carved oak antique Jacobean style court cupboard, unusual antq. Italian desk, Beacon Hill inlaid desk, ant banded inlay 2 pc secretary desk, French leather top writing desk w/figural mounts, early Welch paneled back settee, very early Gothic armchair, Italian antq carved cassone, antq stand w/tiger maple fronts, period Sheraton reeded leg card table, Jacobean stands and chairs, Beacon Hill settee, antique slant lid desk, mahog. QA style highboy and matching lowboy, oak 3 stack barrister bookcase w/leaded glass, Museum Reproduction bookfront desk (Colonial Fum), antq Sheraton dropleaf table w/acanthus carved legs, walnut cvd lecturn, 2 figural cvd walnut tables w/ color marble, 2 draw standing shaving mirror, Federal Card table with stamp CC Milton, 2 tier

burled table attr. J. Gerte, cvd English lady's desk, country antique 6 draw tall chest, walnut Victorian lockside with key, QA custom tea table, antq kneeler, 19th C carved sofa, antq lady's secretary, tapestry wing chair, pr French caned chairs, pr. Asian motif mirrors, nice antique tin punch pie safe, and much more. **MID-CENTURY MODERN FURNITURE & ACCESSORIES:** 2 chests and pr Night Stands George Nelson for Herman Miller, sideboard with sliding doors and drawers (Dux), Beautiful dining set 6 chairs and table, multi-tier rolling bar cart, MCM sofa, Danish chests, 2 Knoll style chairs (Burke Dallas, TX), German Blaupunkt 1960s radio, 6 MCM style dining chairs KFF (Karl Friedrich Forster), brass sculpture Wm Tell Apple by Paul Suttman, floor lamp, nest of tables, MCM club chair, Noguchi coffee table with glass top, some of the items have orig sales slips for purchase from Herman Miller in the 1950s, and other MCM. **ITEMS OF SPECIAL INTEREST:** Oak J.P. Seeburg Piano Co. Chicago Nickelodeon with leaded glass doors and rolls (as found), oak Edison Victrola with rolls and cabinet, vintage Shoe Shine chair Clifford & Co. Boston (Whittemore's Polish c1920) 63" H., antique brass stand-up ship's compass, antique ship's wheel, antique chestnut golf clubs, 6 antique corbels, Curtis book of prints, leaded window with eagle, and other interesting pieces. **ACCESSORIES:** Beautiful pair of gilt bronze and marble candlesticks, Pair of antique Rose Medallion garden seats, pair

2 pc 20" alabaster urns with carved face handles, LeCoultrre atmos clock, W.R. Sayle '75 Nantucket purse w/carved whale, musical bird in cage, Chelsea Barometer, 8 beautiful ornate color glass Murano goblets, lovely pair of lg. floral porcelain lamps, 12 fine porcelain plates with birds, Limoges bowls, several nice lots of glazed antique tiles incl Lowe, Trenton and terracotta stamped tiles, Molaroni Pesaro ewer w/snake handle, bronze African figure 17½" H., Gustav Becker wall clock, 32 piece collection of Dorchester Pottery, Eli Terry pillar & scroll clock, 3 old mohair bears (some Steiff), Chinese porcelain, sand art relief by Shepley architectural firm 18 x 38), nice groupings of glass gas shades, argon shades etc., groups of German antique bisque dolls including large Handwerck/Simon Halbig, 2 sm. antique samplers (Charlotte Jane Richardson 1821 and Mary Brookings), etc. **JEWELRY:** Tiffany & Co. 14k onyx cufflinks, beautiful heavy 14k gold necklace with square gem set clasp (42 dwt), 14k Emerald & diam earrings, 14k lady's wristwatch, 14k rope handcrafted tie clip, coral necklace, 14k earrings, 14k pearl and diamonds bracelet with earrings, and more. **STERLING SILVER & Silver plate:** 2 pr sterl Tiffany & Co. salt & pepper, Ormate Perruzzi serving pieces, 73 piece sterling silver flatware set, 24 ornate sterling forks, several nice lots of sterling silver flatware and tableware, etc. **ARTWORK:** Lovely lg o/c "Suspension of Dazzlement & Disbelief 1994 Lannon Gallery NYC by Dereck Harris (41x56),

portrait of woman in pink dress signed Samuel Burtis Baker 30" x 24", lovely o/c portrait of woman with lace and jewelry (attr. Seymour Joseph Guy), pr. o/b countryside scenes signed G. Stimart 14 x 21, o/c Place de la Madeleine Paris scene 12.5 x 16, James Gale Tyler seascape o/b 9x18, Dean Cornwell crayon drawing of 2 Native Americans 23 x 15, o/c ship pilot boat M. Francis Glusing, Domingo Barreres still life with tea kettle 1959 16" x 20", Lunenburg MA summer day w/c Bruce Rickett, o/c M. Bonting (ships), portrait of young girl w/blue ribbon, lovely antique portrait of young woman with lace and jewelry, stormy seascape o/c, and other signed and unsigned art. **LITHOGRAPHS/PRINTS:** 2 signed Charles Bartlett woodblock prints in color (Kyoto & Taj Mahal from desert), George Braque birds II litho 10 ½ x 14 ½, 2 Hans Erni lithographs, Marcel Fiorini colored etching of flower, hand colored print of soldier, Birdseye lithograph blk/white portrait, 2 sm. Calder posters, and more.

TERMS: Left bids and absentee bids welcome. M. Coyle Auction Lic 2369, Cash/check/MC&Visa 508-733-6868, 15% Buyer's Premium – **ABSENTEE AND PHONE BIDS WELCOME,** just call to arrange. No Food will be offered **DIRECTIONS:** Sale held at the VFW Post 1526, 123 Holliston St., Medway, MA off Route 109 508-733-6868 • coylesauction@verizon.net www.coylesauction.com



COYLE'S

Auction Inc.

TWO SESSION ANTIQUE ESTATES AUCTION

Tuesday, June 27, 2023

VFW Hall, 123 Holliston St., Medway, MA

SESSION 1:

2:30PM – Ephemera Collection & Rugs

SESSION 2: 5:00PM – Estates Auction (See opposite page)

PREVIEWS:

Open! Mon. June 26th - 9:00 AM – 6:00 PM

Tues., June 27th - 9:00 AM to ½ hr. before sales

SEAT RESERVATIONS welcome.

Call or text 774-571-8263

or email us at: coylesauction@verizon.net

ABSENTEE AND LEFT BIDS ALWAYS WELCOME

www.coylesauction.com



Lot #660 "Lacy" Valentine & other greeting cards etc.



Album #625 Approx. 388 cards including Merry Widow hats, caricatures, etc.



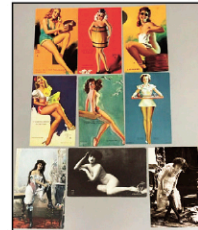
Lot #663 Religious and verse booklets.



Album #612 Approximately 380 collection of unnumbered series or similar by publisher.



2 Album lot #622 with approx. 460 Bamforth and Co. Color postcards arranged in alphabetical order. One of his personal favorite lots.



Album # 603 Approximately 190 cards of beautiful women including pin-up girls, nudes, arcade, suggestive poses etc.



Album #601 Approx. 125 "ultra" beautiful woman and more as the collector called the album. French tinted examples etc.



Lot #647 19thC Cabinet cards of Children and babies - Approx. 90 pieces plus 3 other very large lots of CDV & Cabinet cards (Lots 646, 648, and 649 totaling 350 pieces)



Album # 600 Early English actresses incl. Gabrielle Ray, Edna May, Marie Studholme, Zena Day and other period postcards (Approximately 450 pcs.)



Album #618 Approximately 185 pieces with actresses, beautiful women, novelty cards etc. by various publishers.

Session 1 of the sale begins at 2:30 PM which will feature the private collection of vintage postcards, stereoview cards, photography, trade cards, greeting cards from the collection of the late Stuart "Bob" McDermott of Fitchburg, MA. Mr. McDermott was an avid longtime collector and member/officer of the local postcard club. The collection includes several albums & totaling well over 5000 postcards with many of his personal favorites.

One album of note has approximately 125 images of "ultra" beautiful women as he noted on it mostly French tinted examples etc. Another interesting album contains early 1900s postcards including Eng-

lish actresses such as Gabrielle Ray, Marie Studholme, Edna May and other postcards of beautiful women (approx. 450 in album) by various publishers. There are also 9 albums of Bamforth & Co. both in color and photo black and white series including a 2 volume album of over 450 color series cards in alphabetical order. In addition to hundreds of more Bamforth cards not in albums. Pin-up girls, nudes, arcades and suggestive poses are represented in an album with approx. 190 cards with some Mutoscope cards by Earl Moran and Zoe Mozert. Another album of approximately 160 color cards that will be offered are published by Ullman. Other albums and multiple

boxes of postcards including Rally Day, Religious, Motto, character, cartoon, locations etc. There are several large lots of antique trade cards, greeting cards, holiday cards and more.

In addition to the postcards there is a collection of over 600 stereoview cards with a particularly nice group of approx. 90 with views of Fitchburg, Mt. Wachusett, jail many by J.C. Moulton, etc. In addition, there is another large group of Central MA stereoview cards. Rounding out the stereo cards are hundreds of various cards in black and white as well as color of varying subjects including comical series etc. Photography lots will include many CDV, Cab-

inet Cards, tin types etc. In addition, large lots of various types of ephemera will also be offered. We are pleased to be part of selling this collection.

TERMS: Left bids and absentee bids welcome. M. Coyle Auction Lic 2369, Cash/check/MC&Visa 508-733-6868, **15% Buyer's Premium – ABSENTEE AND PHONE BIDS WELCOME**, just call to arrange. No Food will be offered

DIRECTIONS: Sale held at the VFW Post 1526, 123 Holliston St., Medway, MA off Route 109
508-733-6868 • coylesauction@verizon.net
www.coylesauction.com