

Winter Associates

Auctioneers & Appraisers

LIVE AUCTION
October 23rd at 5:30PM



Important Jewelry from private collection; 1795 Norwich CT Sampler; 18th & 19th C. Furniture and Clocks; 19th & 20th C. Paintings; Silver; Asian inc. Hatcher Coll. and Ming charger; Native American; Oriental Rugs; Ceramics; Glass; Stamps, etc.

View catalog online as of October 13th at www.AuctionsAppraisers.com

Previews:

Friday, Oct. 20th, 12-4 pm

Sunday, Oct. 22nd, 2-4 pm

Monday, Oct. 23rd, 12-5pm

or by appointment.

Important Jewelry from a private collection, (40+) including: hand fabricated drop earrings with four diamonds including two 3.5 ct, one 2.51 ct, and one 2.46 with GIA reports, Art Deco 46 ct. tw. diamond tassel necklace, Edwardian three stone diamond ring with 1.74 ct center, diamond and sapphire engagement ring with GIA report and matching band, opal and diamond halo ring, 7.9mm emerald and diamond ring, 18K diamond bangle and bar pin, 14K and diamond line bracelet and dome ring, etc.; 1795 Norwich Connecticut sampler by Mary "Polly" Elliot (American, 1776 - 1859 owned by family descent; Early furniture and clocks, including, 17th C.: CT Valley bible box; 18th C.: Chest-on-chest from Colchester area; William and Mary highboy with alterations; Chippendale oxbow slant desk; tall chest; corner cabinet; blanket chest; pembroke table, and Queen Anne side chair; 19th C.: Frederick Wingate tall clock, banjo clock, sugar chest, Federal secretary desk, etc.; Americana: 19th C. rocking horse, scrimshaw, Civil War swords, historical Staffordshire, salt-glazed jugs, hooked rugs, paintware, baskets, mechanical banks, etc.; 19th & 20th C. Paintings by George Grosz, James P. Kerr (2), David Bareford (3), Gabriel Godard, Richard W. Rummel, Charles Dickens Wader, etc.; Silver including ornate Durgin 7pc tea and coffee service, Georgian teapot and liner by Peter & Anne Bateman, other makers include Tiffany, Gorham, William Kerr, McMullin, etc.; Asian: Ming 19" ceramic charger, covered jar from the Hatcher Collection recovered from 17th C. shipwreck, Meiji Japanese export silver tea service by Konoike, WW2 Japanese Shin Gunto, bronze sculptures, ivory okimono, inro, miniature tansu chest, Canton & Nanking porcelain, woodblock prints, etc.; Native American: Lakota beaded pipe bag, Navajo transitional blanket, handwoven rugs and baskets from Plains and Pacific tribes, adze, buckskin shirt, squash blossom necklace, etc.; Oriental Rugs (20+) including Antique Persian, silk Iranian (2), Semneh saddle cover, etc.; Ceramics: Newcomb College pottery vase, Ambrosius Lamb for Dresden luncheon set, Tiffany & Co. 10" plates (10), Herend "Rothschild Bird" pattern (37); Tiffany Zodiac set; Glass: early and other Lalique, Galle, Baccarat candleholders and paperweights, Coventry inkwell, etc.; "The Works of William Hogarth"; French Bouille mantel clock, 23" h., artworks by Eugene Lami, Bellange, Charlet, Monnier, etc.; German elephant mystery clock; Extensive American stamp collection, etc.



Art Deco, diamonds & platinum, 40" length, 46.55 cts tw.



Diamonds with GIA reports: two 3.51 ct; one 2.46 ct.; one 2.51 ct



Art Deco sapphire, diamond, platinum



Antique diamond, ruby, 18K, 1 1/2"



18K, 7.9mm emerald, diamonds



14K, Sapphire, 1.06 center diamond with GIA report



Edwardian diam. & plat., 1.74 ct center stone, 4.41 cts tw.



French Bouille, 1855, 23" h.



18k, diamonds



18K, diamonds, 7ct black opal



19th C American oil, 35" h.



1795 Norwich CT, 19", family descent



James Kerr, 1 of 2 oils



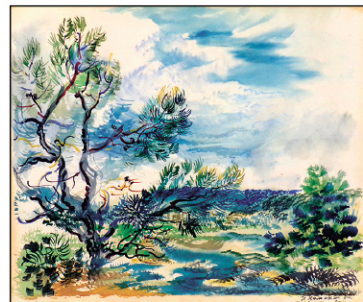
Tiffany, Alvin, Kerr stlg, 12" h.



American Coll.



c. 1900 Sioux & other Native American



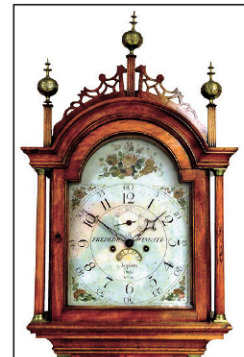
George Grosz, watercolor, 13" h.



Newcomb College, 1931, 3 3/4" h.



Ambrosius Lamm for Dresden, 37 pieces



F. Wingate, 1807



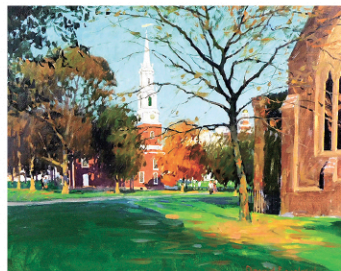
R. Rummel, "The Narrows", oil, 29" h.



Antique Semneh saddle cover



Durgin c. 1895 Belle Epoque sterling



D. Bareford "New Haven: The Green"



19th C.



Colchester, CT area, c. 1800



Konoike, Meiji, silver, 9 1/2" h.



Chinese, Ming Dynasty (1368-1644), 19" h.



Hatcher Coll., 8" h., re-covered 17th C. shipwreck

TERMS: IN-PERSON AUCTION AUDIENCE

Auction begins at 5:30 PM. In addition to live bidding, Winter Associates will accept absentee and phone bids with a 23% Buyer's Premium and live online bidding will be available on Invaluable.com and Liveauctioneers.com with a 28% Buyer's Premium. A 3% discount is available to buyers with cash and approved checks. After the auction, pickup will be by appointment only, please email or call ahead and we will do our best to accommodate you.

LOCATION: 20 mins. west of Hartford, CT. Approx. 2 hrs. from NYC or Boston.