

1



2



3



4



5



6

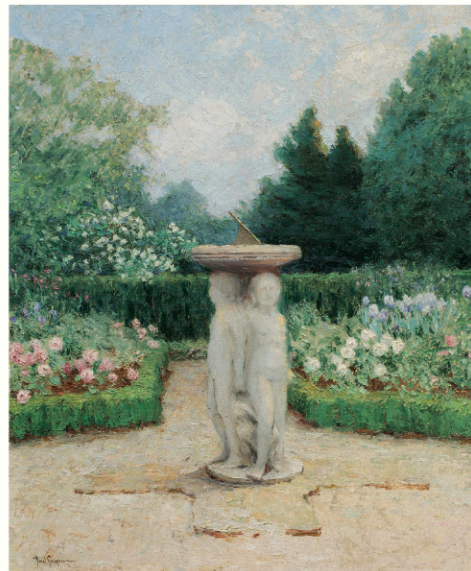


7



8

9



10

1. Paul Sawyier, *Garden with Fountain*, oil on panel, 20" x 24". 2. 1997 Domaine de la Romanée-Conti La Tâche Grand Cru Monopole. 3. 1992 Domaine de la Romanée-Conti Monopole. 4. 1991 Domaine de la Romanée-Conti Richebourg Grand Cru. 5. An impressive Sèvres style luster and gilt decorated gilt bronze mounted porcelain covered urn, late 19th/early 20th century. 6. An Art Nouveau documented Louis Majorelle salon suite, circa 1900. 7. A fine French champlevé enamel and gilt bronze clock garniture, retailed by Schneider, Campbell & Co, Union Square, New York. 8. A Louis XVI style gilt bronze mounted marble assembled clock garniture, retailed by Theodore B. Starr, New York, late 19th century. 9. Paul Sawyier, *Fountain and Rose Garden*, oil on panel, 24" x 20". 10. A fine pair of Louis XVI style gilt bronze mounted marble urns by Susse Frères Foundry.



1



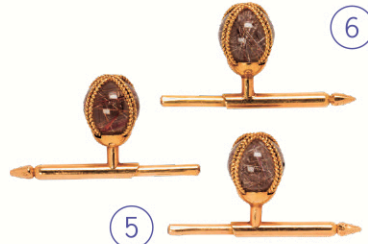
2



3



4



6



5



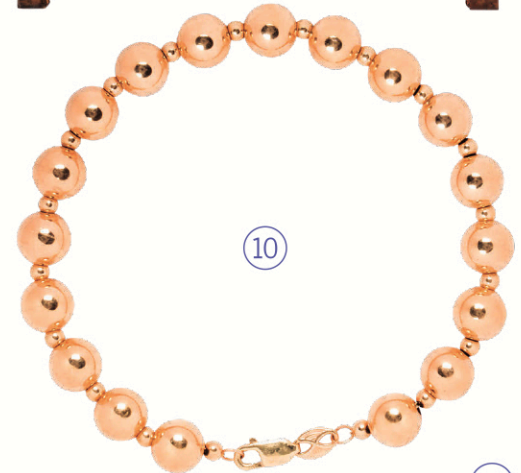
7



8

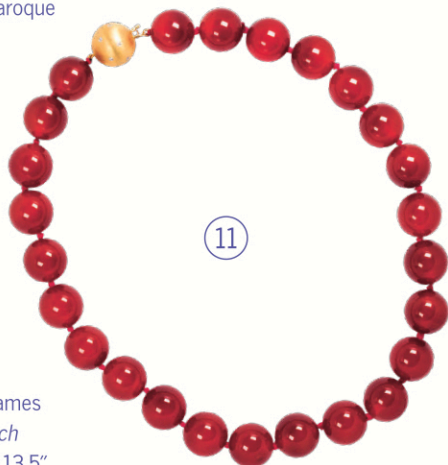


9



10

1. James Weeks (American, 1922–1998), *Untitled (Musicians)*, 1992, oil on board, 22" x 27.75". 2. Eight Chinese porcelain figures of fu lions. 3. A suite of Chinese Export famille rose porcelain with butterflies and flowers. 4. A black cultured baroque pearl and 18k gold ring. 5. A rutilated quartz and 18k gold dress set, French. 6. A Queen Anne oyster burl veneer linen press. 7. A fine pair of Vienna style porcelain urns. 8. 1945 Château Mouton Cadet, Frank Schoonmaker and Baron Philippe de Rothschild, Grand Vin de Médoc (Bordeaux). 9. A Federal coin silver tea service, William B. North, New York, active c. 1820–1828. 10. A 14k gold bracelet. 11. A carnelian, diamond and 18k gold necklace. 12. A Louis XV Vernis Martin style gilt bronze mounted kingwood cabinet. 13. James Taylor Harwood (American, 1860–1940), *Birch by a Stream (Utah)*, 1909, watercolor, 15.5" x 13.5".



11



12



13