

Property from The Estates of Thomas N. Armstrong III & Whitney 'Bunty' Brewster Armstrong

Auction | Tuesday, February 13, 2024 at 10AM ET

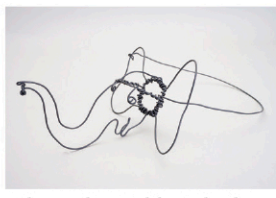
On February 12th we are honored to be offering property from the estates of Thomas N. Armstrong III and Whitney "Bunty" Armstrong, removed from 860 United Nations Plaza NYC. The estate property includes paintings; works on paper; ceramic arts by Betty Woodman and Andrew Lord; outsider art by Justin McCarthy; a group of fine bronzes by various artists; ceramics and porcelains; fine English and American furniture; contemporary and custom furniture, decorations and lighting; and both contemporary and antique oriental carpets.

Thomas N. Armstrong III was an American museum curator and collector who was director emeritus of the Abby Aldrich Rockefeller Folk Art Museum, the Pennsylvania Academy of the Fine Arts, the Whitney Museum of American Art, and the Andy Warhol Museum. He was also a board member of the New York School of Interior Design. He and his wife "Bunty" were long time supporters of The Garden Conservancy of which Mr. Armstrong became chairman in 2007. Mrs. Armstrong was active as a member of The River Club and The Cosmopolitan Club, a long-time sustaining member of the New York Junior League, a long-time board member of the Women's Prison Association, and head of the Ladies Committee of the National Horse Show.

The auction will be broadcast "live online" through Live Auctioneers and Invaluable, with in-house absentee and phone bidding available by registering directly with Schwenke Auctioneers. Live preview at our gallery will be held Thursday, Friday and Saturday, February 8th, 9th and 10th from 11am to 5pm and also by appointment. Please visit our website www.woodburyauction.com for further preview and bidding information.



William Sharp,
Lithograph, The Great
Waterlily of America



Alexander Calder Elephant
& Bow Tie Wire Sculpture



George III Mahogany
Architect's Desk/Chest



Jan Matulka, O/C
Abstract Composition



Korb, Patinated
Bronze Sculpture



Chinese Polychrome
Porcelain Vase



Pair Painted Neoclassical
Style Faux Marble Console
Tables



George II Carved Mahogany
Double Chair Back Settee



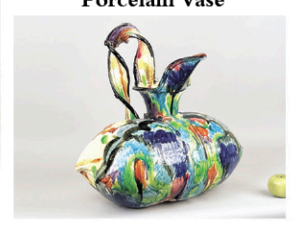
Bartlett, Bronze
Goat Inkwell



Georgian Serpentine
Inlaid Mahogany Chest



Signed American
Folk Tramp Art Box



Betty Woodman, Glazed
Earthenware Pillow Pitcher



Pair Chinese Famille
Verte Lidded Jars



Mabel Dwight, Lithograph,
Stick 'Em Up 1928



Ray Parker, O/C Untitled
Abstract Work 1969



Louis XVI Carved
Walnut Fauteuil



Pair George III
Style Kettle Stands



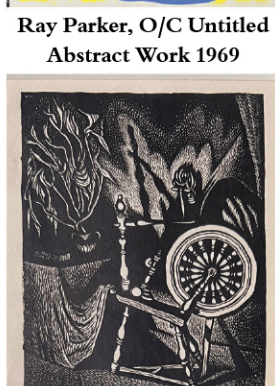
Justin McCarthy, O/P
Justine Johnstone



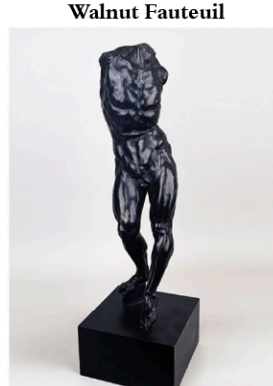
Betty Woodman, Mewar
Memories Earthenware
Triptyque



Cartier Sterling Coffee Pot



Wanda Gag, Wood
Engraving, Spinning
Wheel 1928



Gary Weisman, Bronze
Nude Torso of Man



Andrew Lord, Ceramic
Pitcher Sculpture 1983



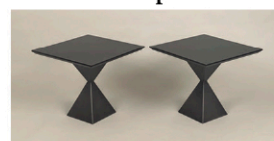
Andrew Masullo, O/C
Abstract Work 3974



Biederman, O/L,
Faint Clue 2001



French Empire Style Eagle
Carved Gueridon Table



Harris Rubin Pair Pyramid
Modern Oak & Steel
Occasional Tables