



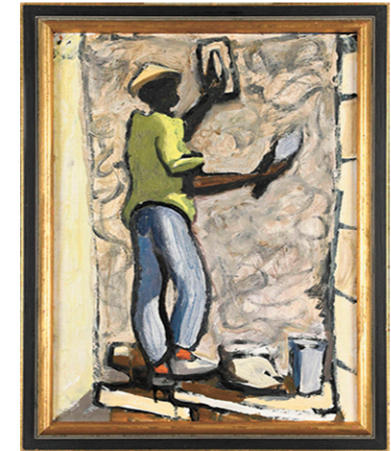
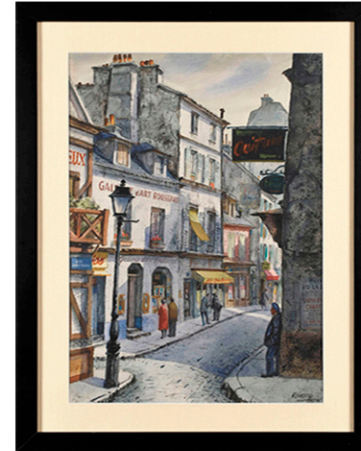
 **WILLIAM A. SMITH, INC.**  
*Auctioneers and Appraisers*



# 20TH CENTURY DESIGN

**Begins To Close Sunday, February 11th at 5pm**

**Join Us For Preview Friday, February 9th from 10am to 4pm**



Featuring the Jeffrey Marshall Estate Collection including over 500 Inuit Carvings, Mid-Century Art, 20th Century Design, Vintage, Modern, and Contemporary Furniture, Accessories, and more.



**WILLIAM A. SMITH INC.**  
**PLAINFIELD, NH**  
**WWW.WSMITHAUCTION.COM**  
**603-675-2549**

Buyer's Premium in Effect, No Sales Tax  
Auctioneers: William G. Smith and Leon Rogers  
**WILLIAM A. SMITH, INC.**

**AUCTIONEERS AND APPRAISERS**

**NH #2825 - VT #57-702 - FL #AU-4814**

**Offices - Plainfield, NH - Greenwich, CT - Sarasota, FL - Phoenix, AZ**

