

Designer Curated Warehouse Furnishings, Fine Art & Decorative Accessories

Saturday, March 23, 2024, at 10:00AM EST

Previews: Thursday, Thursday, March 21, 2024, 2:00-6:30pm EST | Friday, March 22, 2024, 12:00-5:00pm EST | Saturday, March 23, 2024, 9:00-10:00am EST



Chinese bronze,
height 12 3/4"



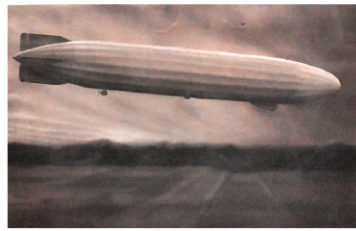
Chinese brush pots, 1 of 7 lots



Andrew Martin "Hanover" sofa



Leather, in manner of
George Smith



Mark Stock, pastel, 35" x 50"



Andrew Martin "Milton" chairs



Carol Summers, woodcut, 44" x 44"



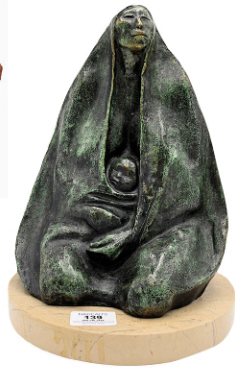
Gilt Bronze Buddha,
height 16"



Andrew Martin "Stingray"
end tables



Ralph Lauren "Cliff House"



After Francisco Zuniga,
bronze, 1 of 4 lots



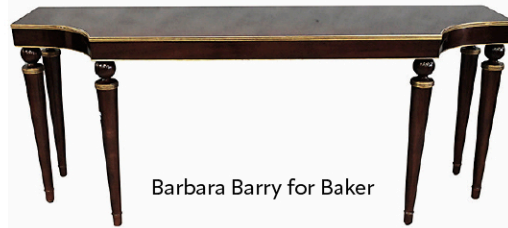
Angelo Asti, oil on canvas,
15" x 11"



Ralph Lauren Home



Harriet Shorr, oil on canvas,
61" x 91"



Barbara Barry for Baker



Robert Donley, pencil,
36 1/2" x 30 1/4"



Lillian August for
Hickory White



Andrew Martin Fleming chairs



Tiffany & Co., 1 of 35 silver lots



Chinese cloisonné,
height 29"



Swarovski, limited edition,
length 16"

500 lots to include:

Fine Art and Works on Paper highlighted by:

Robert Donley, Mark Stock, William Tucker, William Arthur Breakspeare, Margaret Sarah Carpenter, Angelo Asti, R. Barriere, etc.

Designer Warehouse furnishings highlighted by:

Ralph Lauren, Kravet, Lillian August, Baxton Studio, Andrew Martin, Barbara Barry for Baker, Sally Sirkin for Robert J. Scott, McGuire, OKA, Interlude Soto, custom Grayson De Vere, etc.

Decorative Accessories highlighted by:

35 lots of silver, 40 lots of Chinese porcelain, 20 lots of bronzes, Herend, Raynaud Limoges, Limited Edition Swarovski, Waterford, Baccarat, Chase porcelain, Val St. Lambert, etc.

Provenances:

- Designer warehouse furnishings from well-known Greenwich, CT based interior designer
- Estate of Dina Recanati, 944 5th Ave, New York
- West Hartford Estate of Dorothy Elsner
- Estate of Sheila Shevin of Rye, NY

NadeausAuction.com

Bid live at Liveauctioneers • Bidsquare • Invaluable

