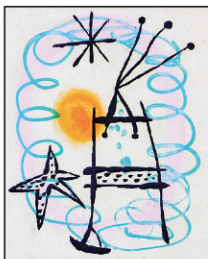


Winter Associates

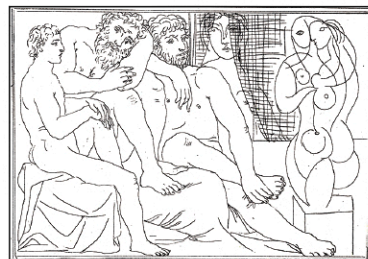
Auctioneers & Appraisers

LIVE AUCTION
March 18th at 5:30PM

**** Heavy Snow Date: March 19th, call to confirm**



Miro 1957 aquatint



Picasso 1933 etching



Toulouse-Lautrec 1895 poster



Matisse, 1929, ed. 25



Calder litho ed. 150



Fernand Leger litho c. 1955

Important Prints, Posters Paintings; Sculpture; Modern and French Furniture; Asian; Jewelry; Silver; Coins; Stamps; Rugs; String Instruments; Ceramics; Glass; Toys, etc.

View catalog online as of March 8th at www.AuctionsAppraisers.com

Previews:

Friday, Mar. 15th, 12-4 pm

Sunday, Mar. 17th, 2-4 pm

Monday, Mar. 18th, 12-5pm

or by appointment.

PRINTS: Picasso "Sculpteurs, modeles et sculpture", Matisse "Jeune femme contemplant un bocal de poissons rouges"; Chagall "L'horloge a Vitebsk"; Miro "Plate XIII from The Ring of Dawn Suite"; F. Leger "Nature Morte a la Coupe de Fruit"; Calder "Boomerangs"; G. Rouault "Automne"; G. Braque, R. Dufy, H. Fink, J. Friedlaender, M. Gloeckner (6), R. H. Hunt (3), K. Kollwitz (2), B. Morisot (4), Helen Noel, J. Pascin, A. L. Piza; Renoir; Suzanne Valadon, J. Villon, etc.; POSTER: Toulouse-Lautrec 51" h. "La Revue Blanche"; Warhol "Exploding Plastic Inevitable" 1967; PAINTINGS: M. Morley (2); Zhu Wei; L. N. Stocks (3), L. Ochtman, F. V. DuMond, W. E. Baum, R. Bye, H. Leith-Ross, A. Chadboum (2), R. G. Solbert, Anna M. R. Brewster (2), W.W. Quirt, Charles Gruppe, R. Lee Anderson, D. Atkins, W. Morrell (2), F. Solomon, etc.; SCULPTURE: Bronze: J. L. Sanchez, J. McDonnell, after A. Waagen; Wood: David Kapetanopoulos, Francois Brochet, Stone; 10 unsigned; FURNITURE: Stickley dining table extends to 113" l., 10 chairs, and sideboard; two bench-made stools; Hand-painted by Thomas L. Rose: dressing table, two chests, and side table; Mid-Century Modern: Maison Bagues and Maison Jansen tables, attr. Maison Bagues rock crystal lamp, attr. C. H. Jones Lucite chair, etc. French style: 18th/19th C. marble-top semainier, French style desk, table de toilette, center table, curio cabinet, parquetry bookcase and table, Travaille armchairs (6), etc.; ASIAN: Contemporary signed paintings; Chinese table-top screen with jade inset disc, Contemporary pottery (25+), many Indian Mogul miniature paintings, silver Taj Mahal, Korean chest; Chinese robes (3), Japanese bronze yatate ink sets (3), armchair, lacquer chest on stand, etc.; JEWELRY: (28) 14K diamond ring with 1.2ct center, 14K gold charm bracelet, pins, rings, pendants, cufflinks, Wolkman ladies watch, etc.; SILVER: Gorham "Melrose" 120+ flatware set; Jensen "Acorn" salad set; "Louis XV" by Whiting, Henry Hebbard for Tiffany, etc.; COINS: Gold Byzantine coin, US and World collections; Morgans, Franklin Mint, etc.; STAMPS (6 lots): Early U.S. including Carrier 1851, Confederate 10 cent, Washington heads, etc.; mint sheets, self-made albums. RUGS: (16) Semi-antique to modern runners, scatter and carpets. STRING INSTRUMENTS & MUSICAL EPHEMERA: Mandolins (3); Lyon Healy c. 1915 style A; 1970s Gibson EM 150; 1940s Gretsch NY; Banjos (3); Stromberg Deluxe Natural Tenor custom c. 1920's, Orpheum No1 four string c. 1925, 1980s Hondo HB88A five string; Guitars (2): 958 Goya G-30 Classical; 1957 Goya T-16 steel string; Stephen Balkin 6 album cover art proofs; CERAMICS: Otto Natzler, Dennis Kirchmann, Drier, Magnum, etc., Italian 44" h. olive oil jug, etc.; GLASS: Inkwells (15+), Lalique, Orrefors, paperweights, demijohn, table lamp with leaded glass shade, etc.; ARCHITECTURAL: Art Deco brass doors (two pairs), wrought iron gates and doors, iron panel; TOYS: Murray Trac pedal tractor, wind ups; Steiff, Eftanbee, etc.; ALSO: Marvel, DC comics; WWII ephemera/ letters and Norman Rockwell posters, Zeppelin photographs, George Grosz drawing of Hitler, etc.



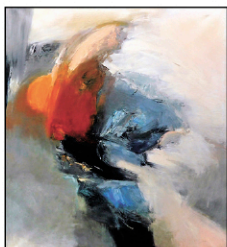
Jose Sanchez bronze



Warhol 1967 poster



Rouault 1933 litho



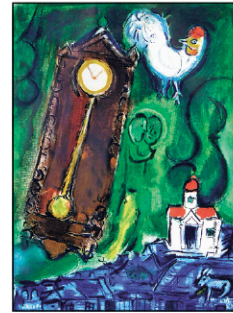
R. Solbert, oil, 72" h.



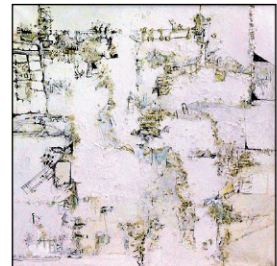
Coins



Gorham "Melrose" stlg, 121 pcs



Chagall, ed. 300



1 of 2 Malcolm Morley oils



U.S. coll.



Chinese jade



After Waagen, bronze



L. Ochtman oil



Zhu Wei, oil, 1992



Curta Type I



6' 7" x 11' 2" Bidjar, signed



Queen of Delhi, 4" h.



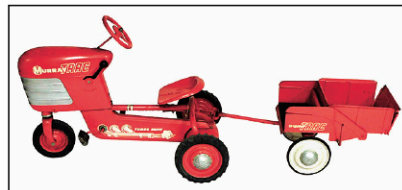
Akbar's Tomb, 2" h.



Linda Nelson Stocks oil, 1 of 3



1.2 ct center, other gold, diams.



Vintage Murray Trac pedal tractor



Lyon Healy, Gibson and 6 others



Semainier, 18th/ 19th C.



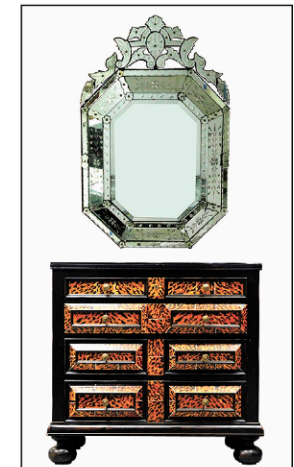
15" Rock crystal, etc.



Stickley, c. 2004, model 713, 64" w.



Korean chest; Oribe type



T. Rose chest, etc.



Stickley dining room suite: two arm and eight side chairs c. 2004, model 713; table c. 2000, model 7746, extends to 113" l.

TERMS: IN-PERSON AUCTION AUDIENCE

Auction begins at 5:30 PM. In addition to live bidding, Winter Associates will accept absentee and phone bids with a 23% Buyer's Premium and live online bidding will be available on Invaluable.com and Liveauctioneers.com with a 28% Buyer's Premium. A 3% discount is available to buyers with cash and approved checks. After the auction, pickup will be by appointment only, please email or call ahead and we will do our best to accommodate you.

Winter Associates, Inc. • 21 Cooke Street, Plainville, CT 06062 • 860-793-0288