

# WESCHLER'S AUCTIONEERS & APPRAISERS

**Fine Jewels, Watches & Silver: A Timed, Online Only Auction  
Friday, September 27 at 10am**



Breitling Stainless Steel Automatic Chronograph Wristwatch, Bentley Motors Special Edition, \$3,000-\$5,000



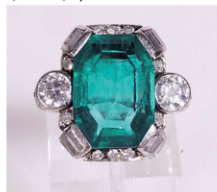
Set of Four Elizabeth II Parcel Gilt Sterling Silver Brutalist Floriform Stem Goblets, Stuart Devlin, London, Circa 1976-1979, \$800-\$1,200



Bulgari 18-Karat Yellow-Gold and Diamond Necklace, \$30,000-\$40,000



Pair of George III Sterling Silver Covered Sauce Tureens, Robert Makepeace and Richard Carter and Associated Maker, London, Circa 1774 and 1777, \$1,000-\$1,500



Platinum, Emerald and Diamond Ring, \$10,000-\$15,000



Rolex Oyster Perpetual Date Yacht Master Yellow-Gold and Stainless Steel Automatic Wristwatch, \$5,000-\$7,000



Art Deco Platinum and Diamond Cocktail Bracelet, \$6,000-\$8,000



Edwardian Platinum and Diamond Ring, \$20,000-\$30,000



French Provincial Silver Oval Covered Soup Tureen on Plated Stand, Attr. to the Workshop of Antoine Dutemple, Bordeaux, Circa 1789, \$2,000-\$4,000



Pair of 18-Karat Yellow-Gold, Ruby and Diamond Clip-Back Earrings, \$1,000-\$2,000



Platinum and Fancy Deep Yellow-Brown Diamond Ring, \$8,000-\$10,000



Christofle French Silverplate Flat Table Service, Marley Pattern, Introduced 1890, 156 pieces, \$2,000-\$3,000



18-Karat White-Gold and Diamond Ring, \$20,000-\$30,000

♦ **Online Only Bidding**  
♦ **Exhibition by appointment only:**  
Monday-Wednesday,  
Sept 23-25, 10am to 4pm;  
Thursday, Sept 26, 10am to 2pm  
♦ **To schedule a preview appointment, view the complete catalogue and register to bid, visit [weschlers.com](http://weschlers.com), invaluable. [weschlers.com](http://weschlers.com) or [auctionzip.com](http://auctionzip.com)**  
♦ **For more information on any lot in the sale, call 202-628-1281 or email [info@weschlers.com](mailto:info@weschlers.com)**

**Weschler's Auctioneers and Appraisers LLC - Since 1890**

**We've Moved! Please note our new address: 515 Dover Road, Rockville, Maryland 20850**

**TEL: 202-628-1281 ♦ FAX: 202-628-2366 ♦ [www.weschlers.com](http://www.weschlers.com)**