

ESTABLISHED IN 1976

ANNUAL FALL AUCTION
Sunday, October 20th at 11 a.m.

PREVIEWS AT THE CRN GALLERY:
 FRIDAY, OCTOBER 18 FROM 10 A.M. TO 5 P.M.
 SATURDAY, OCTOBER 19 FROM 10 A.M. TO 3 P.M.
 ALSO BY APPOINTMENT - LIMITED PREVIEW MORNING OF SALE



BOSTON/SEYMOUR
 ALSO SHOWN: PART OF A LARGE COLLECTION
 OF 19TH C. SCRIMSHAW



AMERICAN FOLK ART, c. 1843
 OF CHARLES FRANKLIN CARTER
 WORCESTER, MA
 UNTOUCHED CONDITION
 o/c; 27 BY 22 IN.



AMERICAN FOLK ART OILS ON PANEL
 CAPTAIN AND GRACE DOTY, c. 1840
 HATCHVILLE, MA (CAPE COD)
 14 BY 10 IN.



NEW YORK CHIPPENDALE
 MAHOGANY SECRETARY/DESK
 c. 1750-760
 8'6" TALL; CASE 44" W
 DESCENDED THROUGH THE COOLIDGE
 FAMILY OF BOSTON



RARE BOSTON/SEYMOUR
 PEMBROKE TABLE
 c. 1785-1793
 29" H; 31" W



A PRIVATE COLLECTION OF MOCHAWARE (PARTIALLY SHOWN)



NEWPORT
 CHIPPENDALE
 SAN DOMINGO MAHOGANY
 TEA TABLE, c. 1730-70
 ISRAELL SACK PROVENANCE



18TH C. BOSTON SILVER
 JACOB HURD TANKARD AND PORRINGER
 PAUL REVERE TABLE SPOONS



MORENON'S
ETERNO CONFLICTO
 WELDED STEEL AND GILT
 45" H



NEW ENGLAND PAINTED
 TRUNK ORIGINAL PAINT
 14" H; 32" W



ANDRE KERTESZ
 (HUNGARY/AMERICA, 1894-1985)
SATIRIC DANCER 1926
 BELOW: **BERENICE ABBOTT**
 (AMERICAN, 1898-1991)
QUEENSBORO BRIDGE, NEW YORK
 GELATIN SILVER PRINT PHOTOGRAPHS

FEATURING WORKS FROM
 THE ESTATE/STUDIO OF
ERNEST E. MORENON
 (FRANCE/BOSTON, 1904-2003)



MORENON WAS AWARDED A GOLD MEDAL FOR HIS MASSIVE CARVED OAK PANELS *PORTE DE ALMA* AT THE ENTRANCE OF THE 1937 PARIS INTERNATIONAL EXPOSITION. IN 1943 MORENON EMIGRATED FROM MARSEILLE TO BOSTON TO BECOME HEAD OF THE BOSTON MUSEUM OF FINE ARTS SCULPTURE DEPARTMENT FROM 1955 TO 1965.

MORENON'S MANY ECCLESIASTICAL SCULPTURES INCL. *THE PIETA* IN THE NATIONAL CATHEDRAL, WASHINGTON D.C. AND STONE RELIEFS IN THE CATHEDRAL OF MARY OUR QUEEN, BALTIMORE, MD



LEFT: **MORENON'S**
THE CONDUCTOR
 WELDED STEEL AND ENAMEL, 84"



MORENON'S THE FUTURE
 GEORGIAN MARBLE, 48"
 EXHIBITED AT THE BOSTON
 MUSEUM OF FINE ARTS IN 1977



CRN AUCTIONS, INC., 57 Bay State Road, Cambridge, MA 02138

www.LiveAuctioneers.com ♦ REGISTER EARLY FOR ONLINE BIDDING ♦ www.Invaluable.com

WEB: www.crnauctions.com PHONE: 617-661-9582 EMAIL: info@crnauctions.com

Established in 1976



PALMER HAYDEN
(AMERICAN, 1890-1973)
O/B; 12 BY 10 IN.



MAURICE GREIFENHAGEN, RA (1862-1931)
DATED 1884; OIL ON CANVAS; 32 BY 26 IN.



MICHEL DELACROIX
(FRENCH, B. 1933)
O/C; 13 BY 16 IN.



ANTONIO JACOBSEN (AMERICAN, 1850-1921)
OCEANLINER *HORATIO HALL*, DATED 1899
BROOKLYN BRIDGE FROM HOBOKEN, NJ; 22 BY 36 IN.



61.5" H
30" W

LARGE GEORGIAN MIRROR
ORIGINAL GLASS



RALPH CAHOON (AMERICAN, 1910-1982)
O/C; 18 BY 23.5 IN.



ANNE PACKARD, B. 1933
MASSACHUSETTS/NEW JERSEY
O/B; 8 BY 10 IN.



JEROME HOWES
(AMERICAN, B. 1955)
O/C; 28 BY 40 IN.



ENGLISH ANTIQUES

GEORGIAN ARCHITECT'S
TABLE/DESK
(SHOWN FULLY OPEN)



PAIR OF GEORGE III
SATINWOOD AND
MAHOGANY GAMING TABLES



14K GOLD LARIAT
NECKLACE, 208 GRAMS
(OTHER JEWELRY TO BE SOLD)

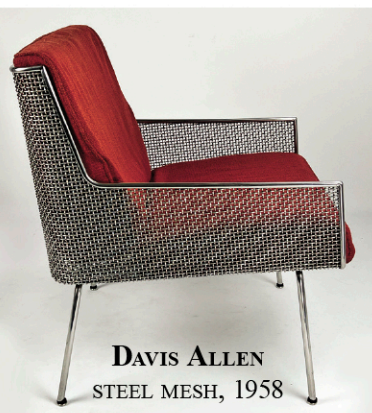


19TH C. ITALIAN PIETRA DURA, SPECIMEN
AND MARBLE TABLE TOP, 28" DIAM.

MID-CENTURY MODERN AND 20TH C.



BROTHER THOMAS BEZANON
CERAMIC VASE, 8"
VERMONT BENEDECTINE MONKS



DAVIS ALLEN
STEEL MESH, 1958



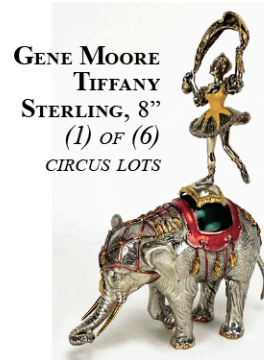
ROBERT RAUSCHENBERG
(AMERICAN, 1925-2008)
SCREEN PRINT DATED 1973
35 BY 24 IN.



MARGARET TAFOYA
NATIVE AMERICAN PUEBLO
SANTA CLARA BLACKWARE
POTTERY, 18.5" H



LOUIS FERON
(FRENCH/AMERICAN, 1901-1998)
GOLD, AGATE AND BRONZE, 7" H; 11" W



GENE MOORE
TIFFANY
STERLING, 8"
(1) OF (6)
CIRCUS LOTS

GO TO OUR WEBSITE FOR ON-LINE CATALOGUE and BID FORMS: www.crnauctions.com

CRN AUCTIONS, INC., 57 Bay State Road, Cambridge, MA 02138

ALL SALES FINAL

MA LIC. #425

www.LiveAuctioneers.com ♦ REGISTER EARLY FOR ONLINE BIDDING ♦ www.Invaluable.com

PLEASE NOTE: ONLINE REGISTRATION IS NOT AVAILABLE DAY OF AUCTION. REGISTER EARLY.

WEB: www.crnauctions.com PHONE: 617-661-9582 EMAIL: info@crnauctions.com