

Winter Associates

Auctioneers & Appraisers

LIVE AUCTION
March 3rd at 5:30PM

19th C. to Contemporary Paintings, Photography & Prints; American & other antique furniture, also D.R. Dimes, Stickley; Asian monumental cloisonné charger, Ruyei ivory sculpture, netsukes; Asian, English & other porcelain; Early books, documents, Torah, Antiphonal & Illuminated manuscripts, Aviation ephemera; Southwestern & Mexican silver jewelry; Native American pottery & carvings; Silver; Rugs; Toy soldiers incl. Courtenay; Bronzes; Judith Lieber & Vintage bags; Currency & Coins, etc.

View catalog online as of
 February 21st at
www.AuctionsAppraisers.com



Addie Herder, sculptural collage, 5" h.



Monumental cloisonné charger, Meiji, 30" diam.

Previews:

Friday, Feb. 28th, 12-4 pm
 Sunday, Mar. 2nd, 2-4 pm
 Monday, Mar. 3rd, 12-5pm
 or by appointment.



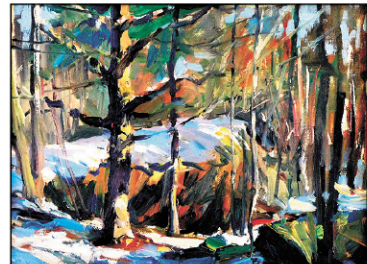
Georgian candlesticks, "Durnell"; 9" h. parquetry chest



Nakagawa Ryuei large ivory okimono, 14 3/4" l.



c. 1580 Strongbox



David Bareford, 1 of 2 oils



A. Gross, oil, 65" h.



James P. Kerr, oil, 24" h.



Aaron Holz, mixed media, each: 13" h. x 11" w.



Lorretta Lux, 1 of 2



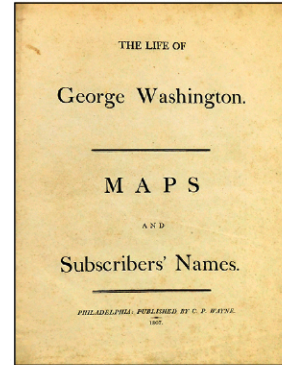
Audubon, 1 of 4 elephant folio



Aviation memorabilia



Illuminated manuscripts (7pcs) from a NE Institution



John Marshall, 1807, Phila.



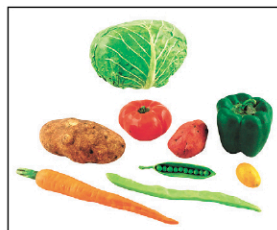
Tiffany stlg



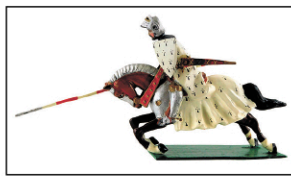
Suffragette china c. 1913



19th C. Viennese enamel; Meissen with Elimeyer stlg overlay



Mary Kirk Kelly ceramic vegetables, largest: 5" x 7"



Courtenay, etc., 22 lots



Southwest, 25 lots



NE, c. 1810, mahogany



Linda Nelson Stocks, 1 of 3 oils



Early 18th C. American



19th C. Connecticut oil of Anna Hawley, 39" h., diary provenance



Native American pottery, 23 pcs



18th C., w/o brasses



18th/19th C. American, largest: 49" w.



Early 18th C. New England



Stickley mahog. banquet, 114" l.



D. R. Dimes dining table

TERMS: IN-PERSON AUCTION AUDIENCE

Auction begins at 5:30 PM. In addition to live bidding, Winter Associates will accept absentee and phone bids with a 23% Buyer's Premium and live online bidding will be available on Invaluable.com and Liveauctioneers.com with a 28% Buyer's Premium. A 3% discount is available to buyers with cash and approved checks. After the auction, pickup will be by appointment only, please email us at Info@AuctionsAppraisers.com or call ahead and we will do our best to accommodate you.

LOCATION: 20 mins. west of Hartford, CT. Approx. 2 hours from NYC or Boston.