



COYLE'S

Auction Inc.

TWO SESSION ANNUAL SPRING ESTATES AUCTION

Tuesday, April 21, 2026

Regency Ballroom at the DoubleTree Hilton
11 Beaver St., Milford, MA 01757

Session 1 – 2:30PM Rugs and Curiosities

Session 2 – 5:00PM Estates Auction

NOTE: PREVIEW DAY OF AUCTION ONLY,
9:00AM to each Auction Times

We will be offering a fine Two Session Spring Antique Estates Auction with an eclectic and quality selection of Antique American, English and French style furniture, fine porcelain and pottery, silver, fine art, jewelry, and much more including lovely items drawn from large Barrington, RI, Sudbury, and Brookline homes plus paintings including ancestral portraits and large group of fine antique Georgian furniture originally from Heath Hall, Wakefield England owned by wool merchant John Smyth and his descendants from their Marion, MA home. In addition, private collections from Boston and Falmouth. *Many diversified and fresh to the market offerings.*

Phone and absentee bids always accepted and welcome.

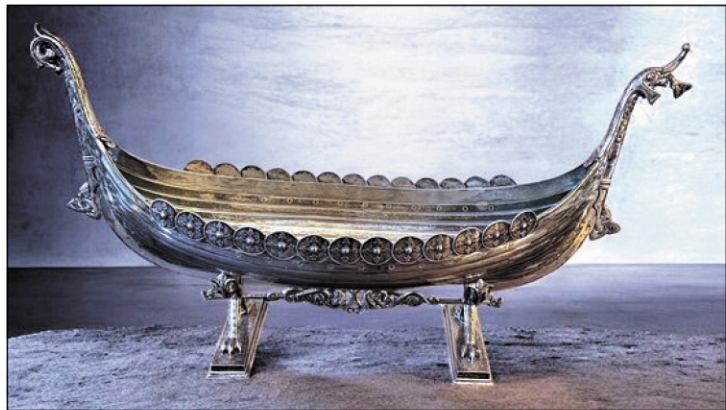
Reasonable 15% Buyer's Premium. No Reserves,

No online bidding. Seat Reservations are Recommended.

Call or text 774-571-8263 or coylesauction@verizon.net

Visit www.coylesauction.com

and link to **Auction Zip** for more photos and descriptions.



Wonderful 830 silver Viking Ship "Presentation Christiania" 1906 (20 1/2" L x 12" H) David Andersen 1905



Wonderful American step back antique cupboard



French narrow fruitwood Louis XVI secretary desk



18th C William & Mary turned and joined leather back side chair with Spanish feet.



Fine selection of porcelain to include Meissen as well as Richard Ginori, Minton, Chinese Export, etc.



Sale to include paintings including ancestral portraits, silver, and Georgian furniture originally from Heath Hall, Wakefield (West Yorkshire) England. A 15,000 square foot country house dating from 1709 owned by prosperous wool merchant John Smyth & his descendants from their Marion, MA home plus items drawn from various New England homes.



Leroy Paris gilt skeleton mantel clock



Unusual Black Forest style 20" lamp



Portrait of Lady Elizabeth Smyth daughter of the Duke of Grafton painted by George Hayter 1819 in London



Fine pair of Napoleon III ebonized ormolu side cabinets



Fine English cylinder desk



Renaissance Revival fire screen with eagle decoration



19thC Louis Vuitton Emballeur canvas dome top trunk with original label, monogram JHW from attic on Beacon St. Boston



Oil on canvas portrait of "Diana wife of Col. J.G. Smyth of Heath 1812-1880" p by J. Morton 1829



17th/18thC Korean ancestral portrait descended through the Captain A.H. Parker family



Private collection of decorated Stoneware



Georgian bowfront chest with writing table



Pair of Chinese Provincial arm chairs



Fine English Regency mahogany open bookcase with brass paw feet



Miniature engraving of gentleman (John Smyth 1825)



Portrait of Francis White (1720-1763) third daughter of General J. Armstrong. Painted by F. Hayman.



Sterling large cake basket, Shreve and Co., San Francisco (39 troy oz)



Portrait of Admiral Robert FitzRoy in China Trade frame artist signed



Nantucket Friendship Basket signed Stanley Roop 1967



Antique Italian 18thC cabinet



Chinese silk merit badge



Great lots of antique pantry boxes including Shaker, game boards etc. from private collection



Fine porcelain including Herend



Large bronze sculpture "Louis XV Valet De Chasse" on marble base after P.J. Mene



One of a pair of Louis XVI marble top unusual 2 door cabinets



16/17thC large Spanish religious carving



Aaron Willard banjo (restored glass)



Portrait "Woman in White" signed Will Howe Foote Prov. Vose Galleries



Paul McCobb MCM room divider



Antique English 2 slant lid desk/chest



Portrait Mary Elizabeth -Countess Grey



One of two oil still life paintings by Romek Arpad (20 x 26)



American antique tall clock by A. Edwards Ashby and Scottish antique tall clock "Patterson, Coal Bridge" with nice dial



Handel floor lamp



Folk art Cat House



Van Briggle pottery vase and other pottery



8' Ship model of the vessel "Sachem"

SESSION 1 AT 2:30 PM

Oriental Rugs and Curiosities: 12+ oriental carpets from estates including roomsizes, artwork, country primitives, interesting estate lots, costume jewelry and more.

SESSION 2 AT 5:00 PM

FURNITURE: Fine pair of Napoleon III ebonized ormolu side cabinets, pair of Louis XVI 2 door cabinets with colored marble, William and Mary antique Boston sidechair with leather and Spanish feet, wonderful antique diminutive size mahogany lady's inlaid roll top desk, fine English Regency mahog open bookcase w/ brass paw feet, American antique tall clock by A. Edwards Ashby, MA, fine Biedermeier ormolu day bed with swans, antique Queen Anne desk, fine Renaissance Revival fire screen w/ eagle decoration, French narrow fruitwood Louis XVI secretary desk, fine Regency Rosewood 2 door cabinet, Scottish antique tall clock "Patterson, Coal Bridge" with nice dial, Southern inlaid cherry antique chest, pr. 19thC Rosewood side tables, small English 2 piece slant lid chest combination, antique Italian 18th C cabinet, unusual Georgian bowfront chest with writing tab, "The Marshall" silver trunk with fitted interior, antique country tables and chairs including assembled set of bird cage Windsors, stylish Rosewood carved piano stool, Federal style carved 2 piece settee set, antique English bowfront chest, Georgian 2 draw side cabinet, unusual 2 draw library table w/ secret doors, 1900 Empire style console table with ormolu, New England cherry slant lid desk, Turkish tufted armchair w/ fringe, 2 American antique bowfront chests, and more.

ITEMS OF SPECIAL INTEREST: 19thC Louis Vuitton Emballeur

canvas dome top trunk with original label monogram JHW from attic of Beacon St. Boston, Nantucket Friendship Basket signed Stanley Roop 1967, Nantucket Swing handle basket signed Joyce Romano 1993, Victorian Stereoscope Machine (floor model), ETS Maxant Paris Barograph, 8' Ship model of the vessel "Sachem", cased ship model "HMS Success", decorative decoys/carvings, and more.

ACCESSORIES: Lovely antique gilt skeleton clock with glass dome, 6 branch French bronze hanging French Victorian light, 16/17thC large Spanish religious carving, P.J. Mene large bronze sculpture "Louis XV Valet De Chasse" on marble base, Great groupings of graduated painted antique pantry boxes including oval and Shaker, etc. 2 antique silhouettes, 12 plus antique Stoneware crocks and jugs most with blue slip decoration, Folk art hooked rug with Masonic symbols (33" x 65"), country primitives including shaker, Pr of Molyneux Boston Andirons, Aaron Willard banjo clock 33" (restored glass), floor lamp with Handel label, lg Roger's Group "Coming to the Parson", Meissen porcelain, Chinese porcelain and lamps, gilt bronze relief of Wellington in shadow box frame, antique stick barometer, Herend fish platter and floral fitted round serving piece, Richard Ginori china, Large set of Waterford crystal stemware and accessories, Tiffany Crystal, 2 portrait relief plasters (H. Cristina Meade), and much more.

FINE SILVER AND JEWELRY: Wonderful 830 silver Viking Ship "Presentation Christiania" 1906 (20 1/2" L x 12" H), beautiful Sterling large cake basket, Shreve and Co., San Francisco (39 troy oz), many sterling silver lots, fine 14k & 18k jewelry with diamonds and stones, sterling jewelry, and more.

ARTWORK: Portrait of Lady Elizabeth Smyth 1819 with pillar in background, 17th/18thC Korean ancestral portrait descended through the Captain A.H. Parker family, portrait of gentleman Irwin Hoffman (Child Gallery label), Miniature engraving of gentleman (John Smyth 1825), Large portrait of Francis White (1720-1763) 37" x 32", portrait of Diana (J. Morton) wife of Colonel. J.G. Smyth 1812-1880 38" x 29", Portrait of Admiral Robert FitzRoy in China Trade frame signed, Portrait "Woman in White" signed Will Howe Foote Prov. Vose Galleries 24" x 20", 2 oil still life paintings by Romek Arpad (20 x 26), Pastoral river scene by J.L. Van der Meide, Frank Benson Ducks in Flight etching signed, folk art watercolor possibly Newburyport, 2 sm F. Benson etchings, Portfolio with watercolors of Heath Hall, Wakefield England Smythe family photos and related framed material, nice watercolors & paintings Cape and Maine, J.E. Eccles "The Disappointed Lover", "Attack at Sea" w/c by Charles Manby, 4 framed Peter Hunt lithographs, and more.

TERMS: M. Coyle Auction Lic 2369, Cash/check/MC&Visa 508-733-6868, **15% Buyer's Premium - ABSENTEE AND PHONE BIDS WELCOME**, just call 774-571-8263 to arrange. No Online Bidding. Email: coylesauction@verizon.net

DIRECTIONS:
Sale held at **LOCATION**
Regency Ballroom at the Double Tree Hilton,
(Exit 48 Rte 109 West)
11 Beaver St., Milford, MA 01757
Restaurant and Accommodations on Premises
www.coylesauction.com

