



1



3



2



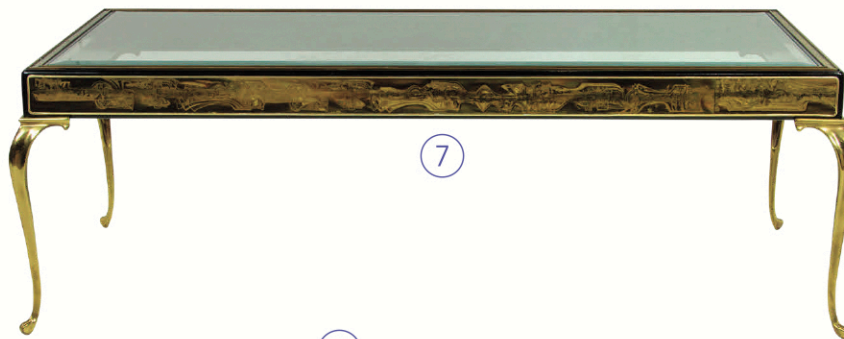
4



5



6



7



8



9



10



11



12

1-3 Provenance: The Estate of Senator Dianne Feinstein (1933-2023). 1. A Mottahedeh porcelain dinner service in the Tobacco Leaf pattern. 2. Two Melanie Taylor Kent color serigraph artist's proofs: *Return of the Cable Cars & Golden Gate Bridge*. 3. Three Tibetan Buddhist silver ritual objects. 4. A Chinese famille rose 'hundreds bats' charger dish, Guangxu mark and period. 5. A Chinese huanghuali chest, 18th century. 6. Yan Bolong, *Autumn Colors*. 7. A Bernhard Rhone for Mastercraft low table. 8. Two antique gemstone snake brooches. 9. A French Neoclassical polychrome and parcel gilt console table. 10. A fine French Régence ormolu mounted commode. 11. An antique lava stone carving and 14k gold brooch. 12. An antique turquoise and 15k gold necklace and earring set.