

Winter Associates

Auctioneers & Appraisers

LIVE AUCTION
Monday, June 1st at 5:30PM



**Jewelry, Silver, 19th-20th C. Paintings and Prints;
 Early American to MCM furniture; Garden; Asian;
 19th-20th C. Decorative Arts; Oriental Rugs, etc.**

View catalog online as of May 22nd at www.AuctionsAppraisers.com

Previews:
 Friday, May 29th, 12-4pm
 Sunday, May 31st, 2-4pm
 Monday, June 1st, 12-5pm
 or by appointment.



Bessie Drennan, oil, 16" h.



20 ct aqua.



signed Y. Karsh
 "Robert Frost"



9 pcs David Yurman
 inc. 16" l. & 7 1/2" l.



14K & diamond



14K E. Howard; 18K French



Herend "Rothschild Bird (Mayer)" Special Order, 14 pcs



Pre-Columbian & Coptic



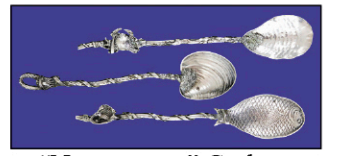
Wallace "Grand Baroque", 97 pcs



14K Etruscan Revival



Philippe Crown Trifari "Jewels of India"; also 16 generous lots inc. Eisenberg, Weiss, Mazer, Givenchy, Corocraft, etc.



"Narragansett" Gorham



Sailors' Valentines



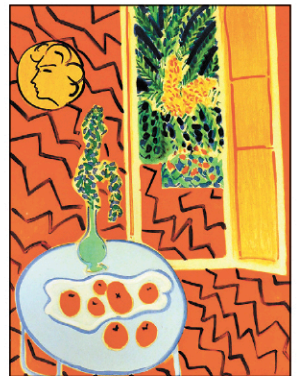
Niihau shell lei, 32" l.



Carved Chinese screen w. embroidery;
 S. African 'stinkwood', 35" h.



V. Smarkusz, 1 of 10 on
 aluminum



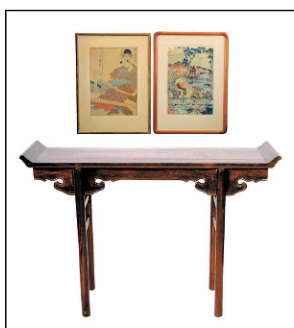
Charles Sorlier after
 Matisse



signed Handel, #6990, floor



1 of 3 Linda N. Stocks oils



Chinese altar; woodblocks



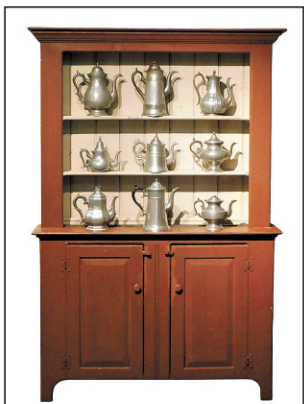
Chinese Art Deco carpet, 13' x 10'



Fabricus & Kastholm for
 Harvey Prober, c. 1970



Bingham "Jolly Flat Boat
 Men", 1847 engraving



20th C., red finish;
 19th C. pewter



Grain painted cabinet dated
 '1863'



Gustavian &
 French Country



Russell Woodard
 "Sculptura", c. 1950



Georgian style banquet, 93" l.

TERMS: IN-PERSON AUCTION AUDIENCE

Auction begins at 5:30 PM. In addition to live bidding, Winter Associates will accept absentee and phone bids with a 23% Buyer's Premium and live online bidding will be available on Invaluable.com and Liveauctioneers.com with a 28% Buyer's Premium. A 3% discount is available to buyers with cash and approved checks. After the auction, pickup will be by appointment only, please email us at Info@AuctionsAppraisers.com or call ahead and we will do our best to accommodate you. **LOCATION:** 20 mins. west of Hartford, CT. Approx. 2 hours from NYC or Boston.

Winter Associates, Inc. • 21 Cooke St. Plainville, CT 06062 • 860-793-0288 • Contact us at: Info@AuctionsAppraisers.com