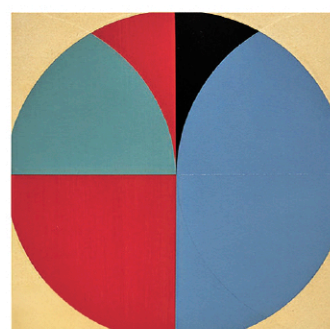
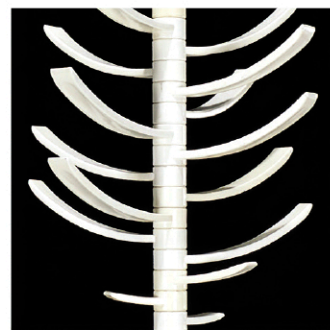


MILLEA BROS. SELECT AUCTION

Jun 17, 18 & 19 @ 10:00am



OUR 3-DAY SELECT SALE IS HERE, BRINGING TOGETHER THE FINEST ASSORTMENT OF ART, ANTIQUES, AND DESIGN FROM THE BEST NEW YORK AREA ESTATES



A LIVE GALLERY AUCTION
& ONLINE BROADCAST

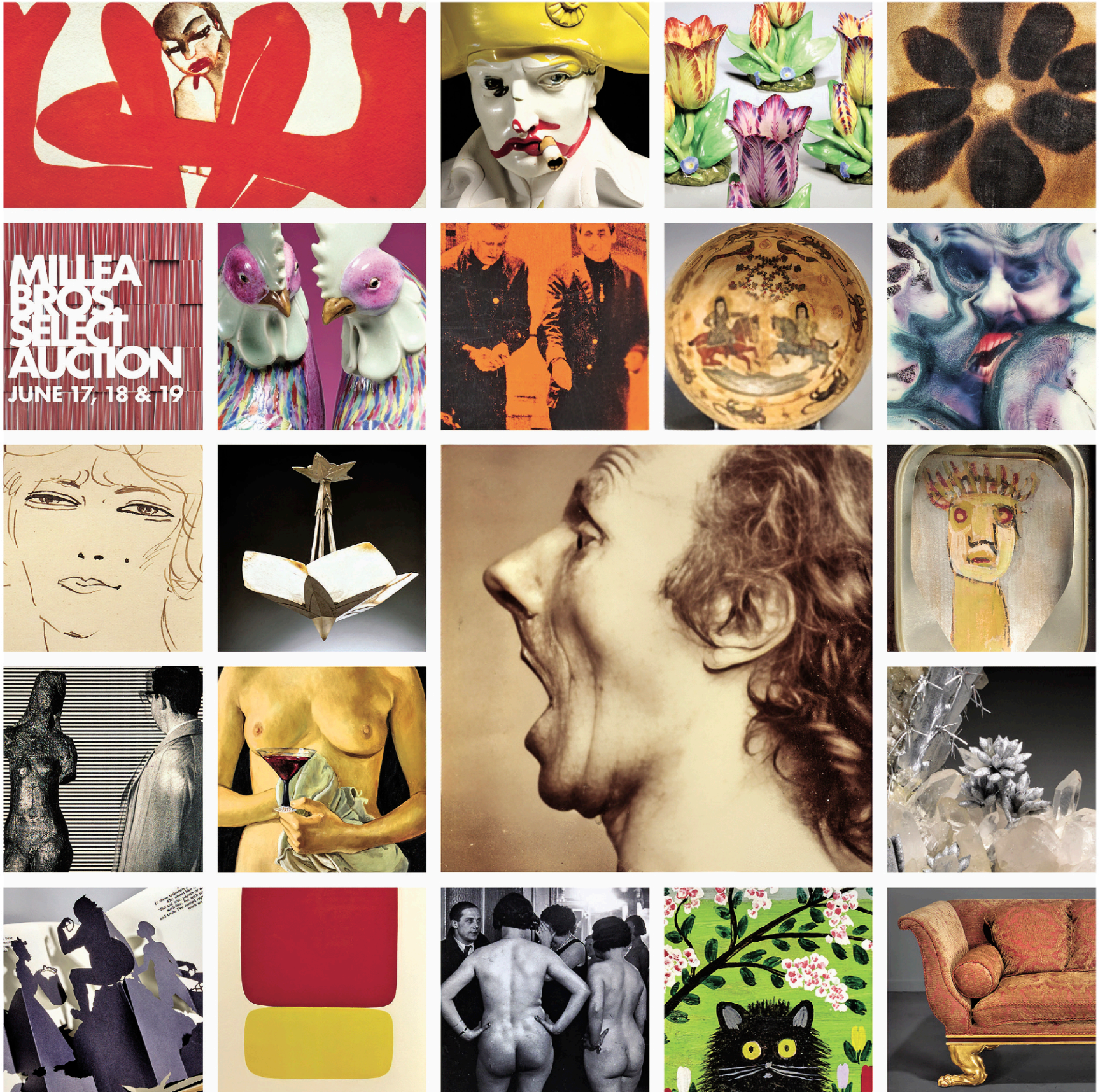
Boonton, New Jersey

browse & bid @
milleabros.com



info@milleabros.com • 973.377.1500

Millea Bros.' June 17-19 "SELECT" auction is here, bringing an exceptional mix of art, design, antiques, and rare objects sourced from prominent private collections, institutions, and estates. **Day One** spotlights Modern Design, Post-War and Contemporary Art, and Photography, featuring a **Peter Marino** private commission with works by De Sede and Laverne, selections from the estate of Michael Hampton with works by Cindy Sherman, Lucas Samaras, and Irving Penn, as well as works by Lucian Freud, Andy Warhol, Arman, and exhibited works on paper by Ellsworth Kelly. **Day Two** offers Asian, American, and British art and antiques, with highlights such as **Iris Apfel's** Peking Opera curtains, Meiji katanas, Steuben glass, a Raphael Soyer portrait of **Mary Travers**, dinosaur fossils, a 1909 Aeolian Baby Grand Piano from **Jackie Kennedy's** childhood home, and Dwight D. Eisenhower signed D-Day papers. The sale concludes on **Day Three** with Continental decorative arts, Impressionist and Modern art, and Arts of the Middle East, featuring works by Rembrandt, Chagall, Picasso, and Picabia, alongside exemplary furniture and design including a Louis XIV bouffe bureau Mazarin, an Albert Cheuret "Cactus" chandelier, Middle Eastern ceramics and textiles, a Luigi Bajoni violin, and a Neoclassic faience stove from the home of a lady friend of Emperor Franz Joseph.



PREVIEW HOURS

Our doors will be open for preview on Mon, Jun 15, from 11am to 7pm; Tue, Jun 16, from 11am to 5pm; Wed, Jun 17, from 9am to 5pm; Thu, Jun 18 from 9am to 5pm; and Fri, Jun 19, from 9am to 10am.

browse & bid @
milleabros.com



info@milleabros.com • 973.377.1500